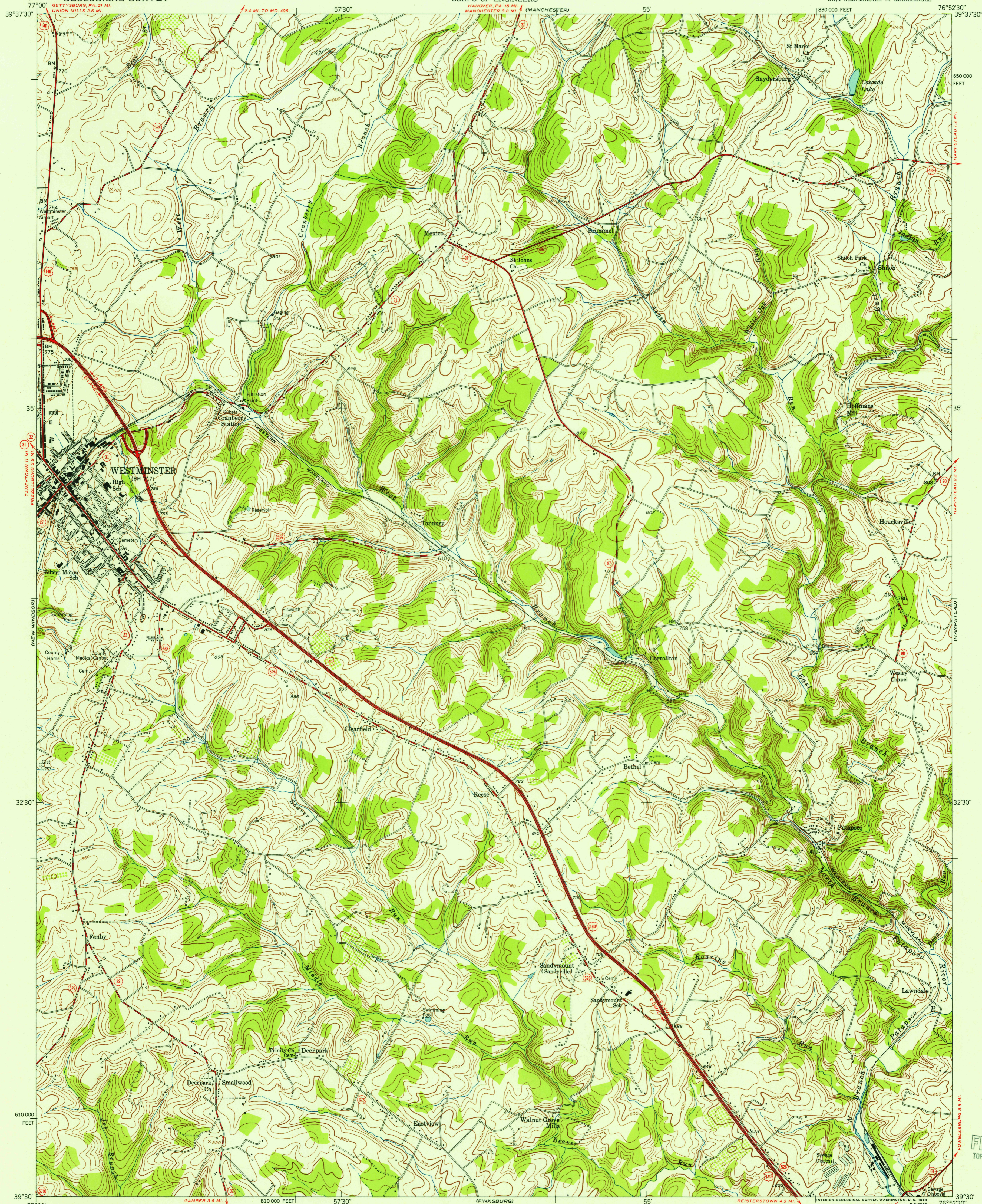


UNITED STATES
DEPARTMENT OF THE INTERIOR
GEOLOGICAL SURVEY

UNITED STATES
DEPARTMENT OF THE ARMY
CORPS OF ENGINEERS

WESTMINSTER QUADRANGLE
MARYLAND—CARROLL CO.
7.5 MINUTE SERIES (TOPOGRAPHIC)
SW/4 WESTMINSTER 19' QUADRANGLE



U.S.G.S.
FILE COPY
TOPOGRAPHIC DIVISION

U.S.G.S.
FILE COPY
TOPOGRAPHIC DIVISION

Map by the Corps of Engineers, U.S. Army
Edited and published by the Geological Survey

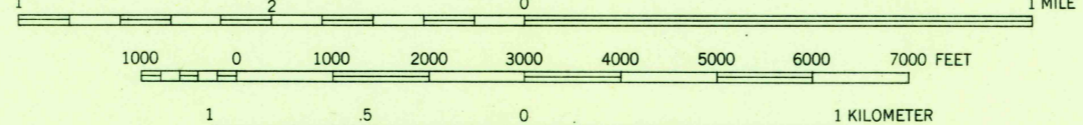
Control by USGS, USC&GS, and USSCS

Topography from aerial photographs by stereophotogrammetric
methods. Aerial photographs taken 1943
Culture revised by the Geological Survey 1953

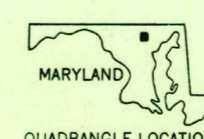
Polyconic projection. 1927 North American datum
10,000-foot grid based on Maryland coordinate system

TRUE NORTH
MAGNETIC NORTH
APPROXIMATE MEAN
DECLINATION, 1953

SCALE 1:24,000



CONTOUR INTERVAL 20 FEET
DATUM IS MEAN SEA LEVEL



ROAD CLASSIFICATION
Heavy-duty 4 LANE 16 LANE Light-duty
Medium-duty 4 LANE 16 LANE Unimproved dirt
U.S. Route State Route

WESTMINSTER, MD.
SW/4 WESTMINSTER 19' QUADRANGLE
N3930—W7652.5/7.5

1953

SEP 17 1954

THIS MAP COMPLIES WITH NATIONAL MAP ACCURACY STANDARDS
FOR SALE BY U. S. GEOLOGICAL SURVEY, WASHINGTON 25, D. C.
A FOLDER DESCRIBING TOPOGRAPHIC MAPS AND SYMBOLS IS AVAILABLE ON REQUEST