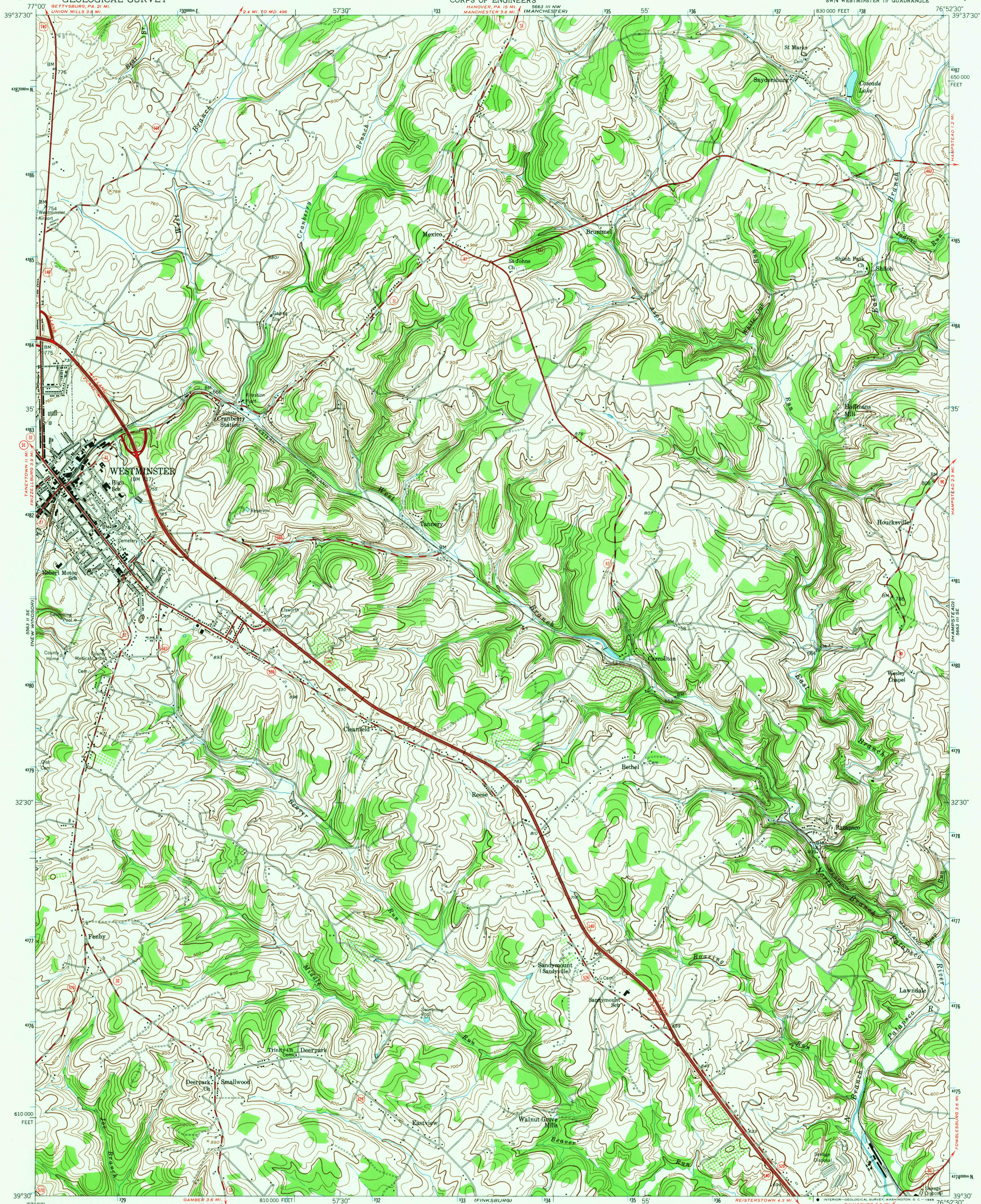


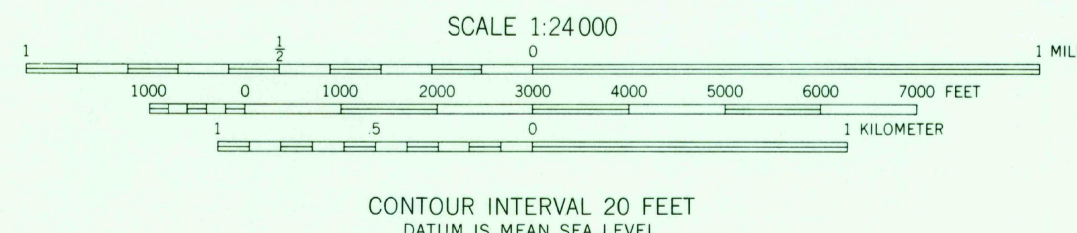
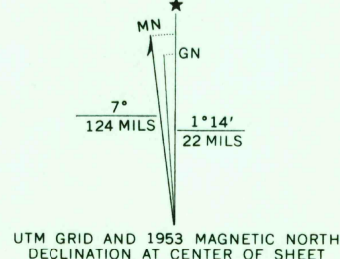
UNITED STATES
DEPARTMENT OF THE INTERIOR
GEOLOGICAL SURVEY

UNITED STATES
DEPARTMENT OF THE ARMY
CORPS OF ENGINEERS

WESTMINSTER QUADRANGLE
MARYLAND—CARROLL CO.
7.5 MINUTE SERIES (TOPOGRAPHIC)
SW/4 WESTMINSTER 15' QUADRANGLE



Maped by the Corps of Engineers, U. S. Army
Edited and published by the Geological Survey
Control by USGS, USCGS, and USSCS
Topography from aerial photographs by stereophotogrammetric
methods. Aerial photographs taken 1943
Culture revised by the Geological Survey 1953
Polyconic projection. 1927 North American datum
10,000-foot grid based on Maryland coordinate system
1000-meter Universal Transverse Mercator grid ticks,
zone 18, shown in blue



THIS MAP COMPLIES WITH NATIONAL MAP ACCURACY STANDARDS
FOR SALE BY U. S. GEOLOGICAL SURVEY, WASHINGTON, D. C. 20242
A FOLDER DESCRIBING TOPOGRAPHIC MAPS AND SYMBOLS IS AVAILABLE ON REQUEST

USGS
Historical File
Topographic Division



U.S.G.S.
FILE COPY
TOPOGRAPHIC DIVISION

ROAD CLASSIFICATION
Heavy-duty 4 LANE 6 LANE Light-duty
Medium-duty 4 LANE 6 LANE Unimproved dirt
U. S. Route State Route

WESTMINSTER, MD.
SW/4 WESTMINSTER 15' QUADRANGLE
N3930-W7652.5/7.5

1953

AMS 5663 III SW-SERIES V833

2245
AUG 24 1953