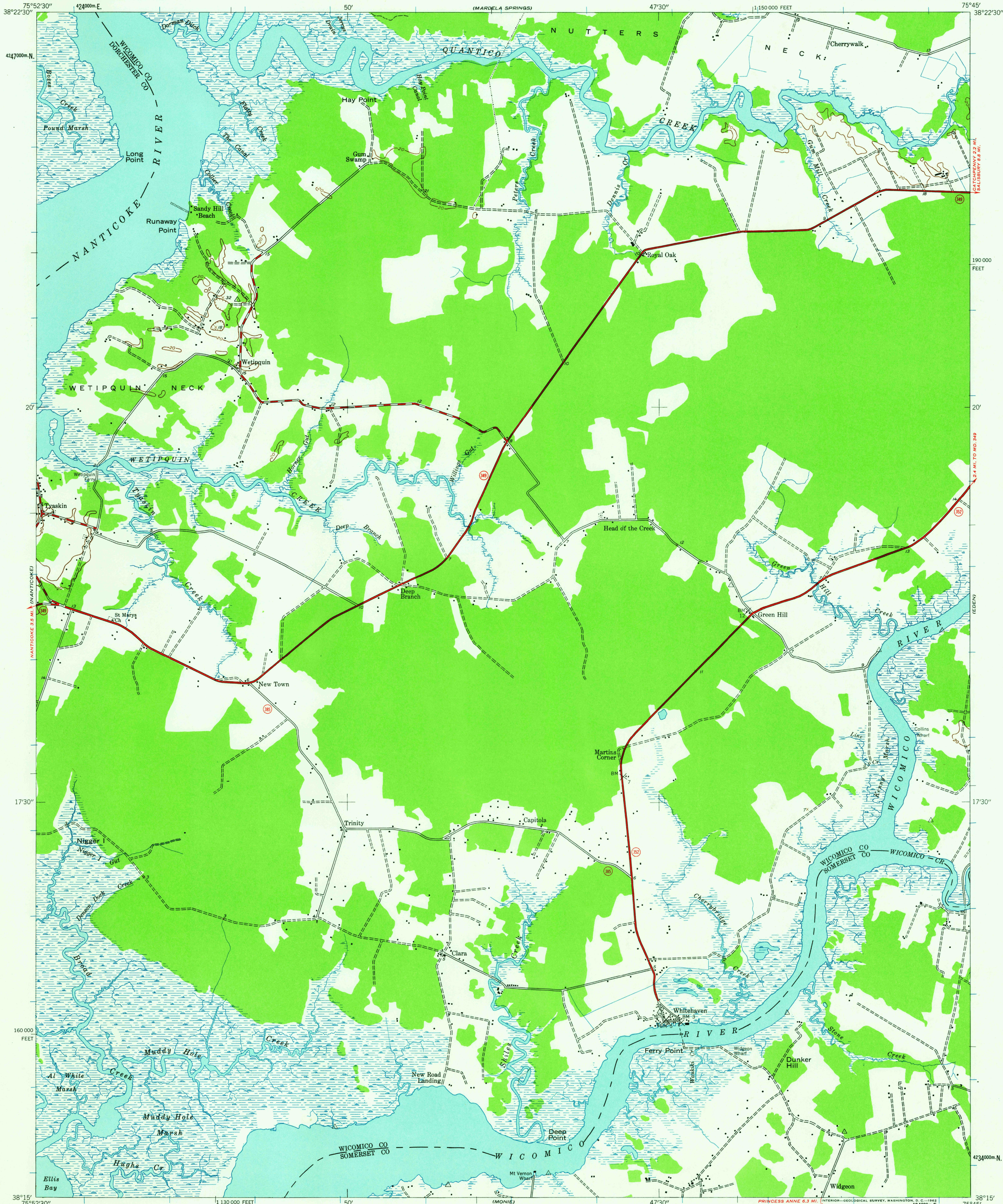


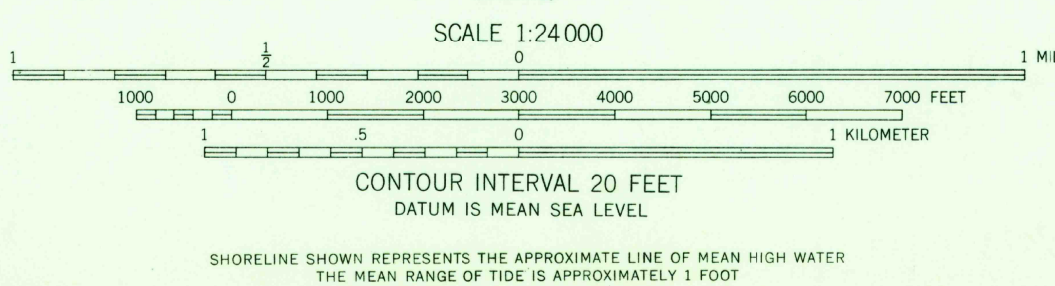
UNITED STATES
DEPARTMENT OF THE INTERIOR
GEOLOGICAL SURVEY

WETIPQUIN QUADRANGLE
MARYLAND
7.5 MINUTE SERIES (TOPOGRAPHIC)
SE/4 NANTICOKE 15' QUADRANGLE



Mapped by the Army Map Service
Published for civil use by the Geological Survey
Control by USC&GS
Topography by photogrammetric methods from aerial photographs
taken 1942 and platetable surveys 1942
Polyconic projection, 1927 North American datum
10,000-foot grid based on Maryland coordinate system
1000-meter Universal Transverse Mercator grid ticks,
zone 18, shown in blue

7 1/2°
TRUE NORTH
MAGNETIC NORTH
APPROXIMATE MEAN
DECLINATION, 1942



THIS MAP COMPLIES WITH NATIONAL MAP ACCURACY STANDARDS
FOR SALE BY U. S. GEOLOGICAL SURVEY, WASHINGTON 25, D. C.
A FOLDER DESCRIBING TOPOGRAPHIC MAPS AND SYMBOLS IS AVAILABLE ON REQUEST

USGS
Historical File
Topographic Division



ROAD CLASSIFICATION
Heavy-duty ——— Light-duty ———
Medium-duty ——— Unimproved dirt ———
State Route

U.S.G.S.
FILE COPY
TOPOGRAPHIC DIVISION

WETIPQUIN, MD.
SE/4 NANTICOKE 15' QUADRANGLE
N3815-W7545/7.5

1942

AUG - 3 1962

2120