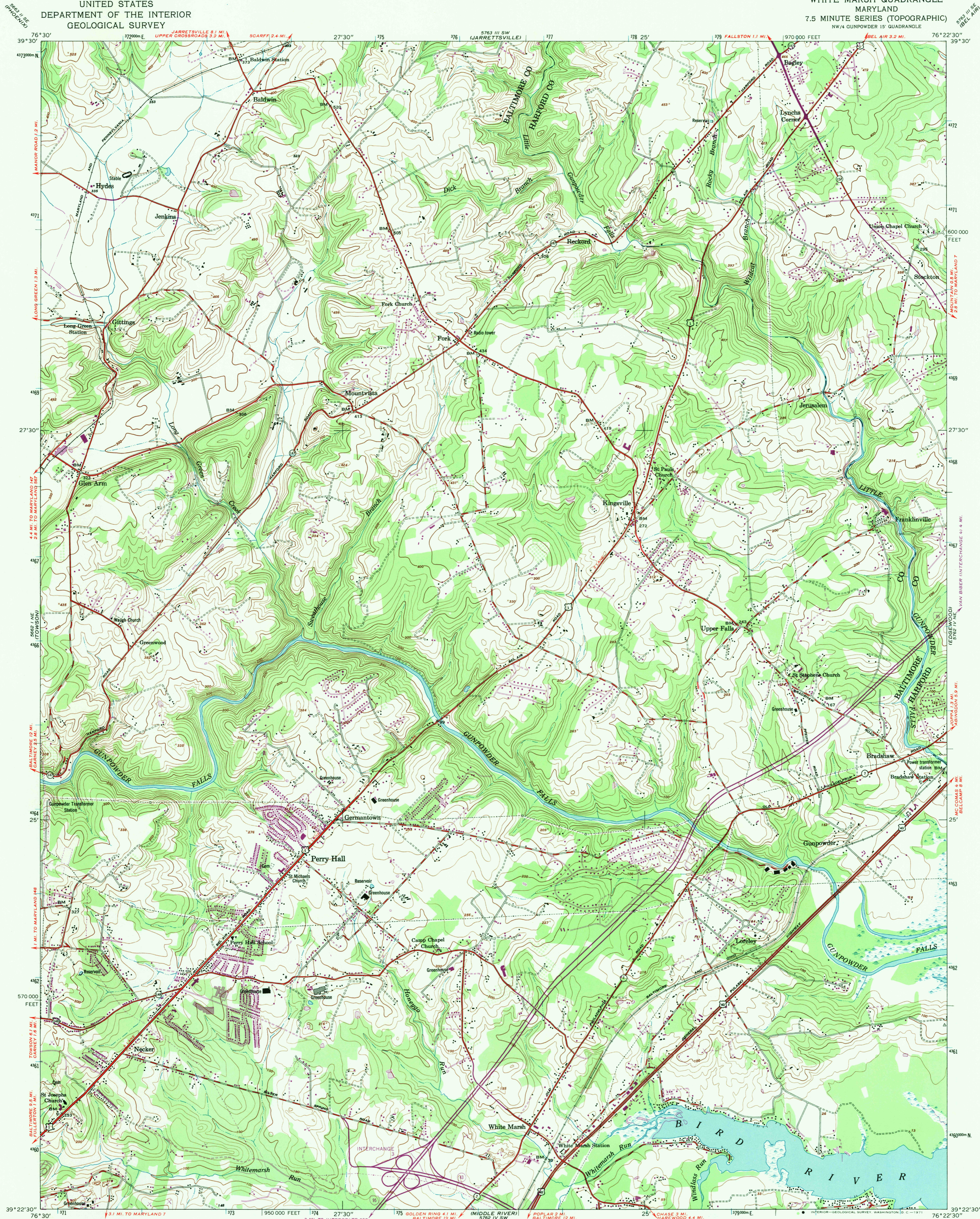
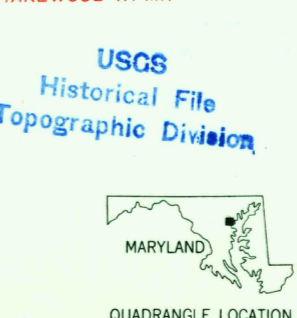
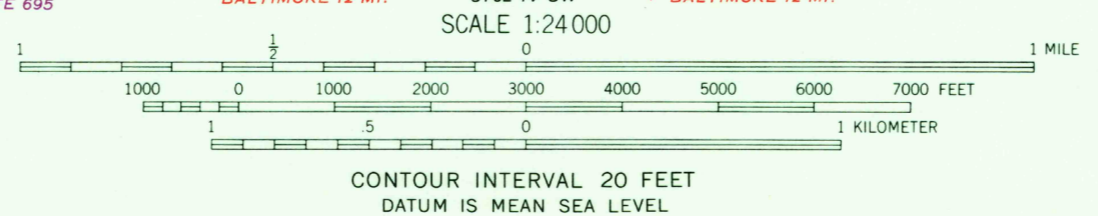
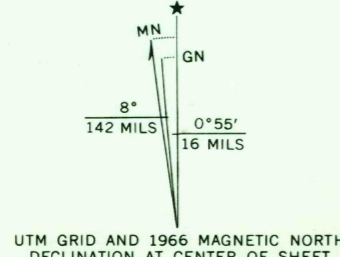


UNITED STATES  
DEPARTMENT OF THE INTERIOR  
GEOLOGICAL SURVEY

WHITE MARSH QUADRANGLE  
MARYLAND  
7.5 MINUTE SERIES (TOPOGRAPHIC)  
NW/4 GUNPOWDER 15' QUADRANGLE



Map by the Army Map Service  
Published for civil use by the Geological Survey  
Control by USC&GS and USGS  
Topography from aerial photographs by multiplex methods  
Aerial photographs taken 1947. Field checked 1949  
Polyconic projection. 1927 North American datum  
10,000-foot grid based on Maryland coordinate system  
1000-meter Universal Transverse Mercator grid ticks,  
zone 18, shown in blue  
No distinction made between barns, dwellings,  
commercial and industrial buildings  
Revisions shown in purple compiled by the Geological  
Survey from aerial photographs taken 1966  
This information is not field checked



ROAD CLASSIFICATION  
Heavy-duty ——— Light-duty ———  
Medium-duty ——— Unimproved dirt ———  
Interstate Route U.S. Route State Route

U.S.G.S. WHITE MARSH, MD.  
NW/4 GUNPOWDER 15' QUADRANGLE  
N3922.5-W7622.5/7.5  
1951  
PHOTOREVISED 1966  
AMS 5762 IV NW-SERIES Y833