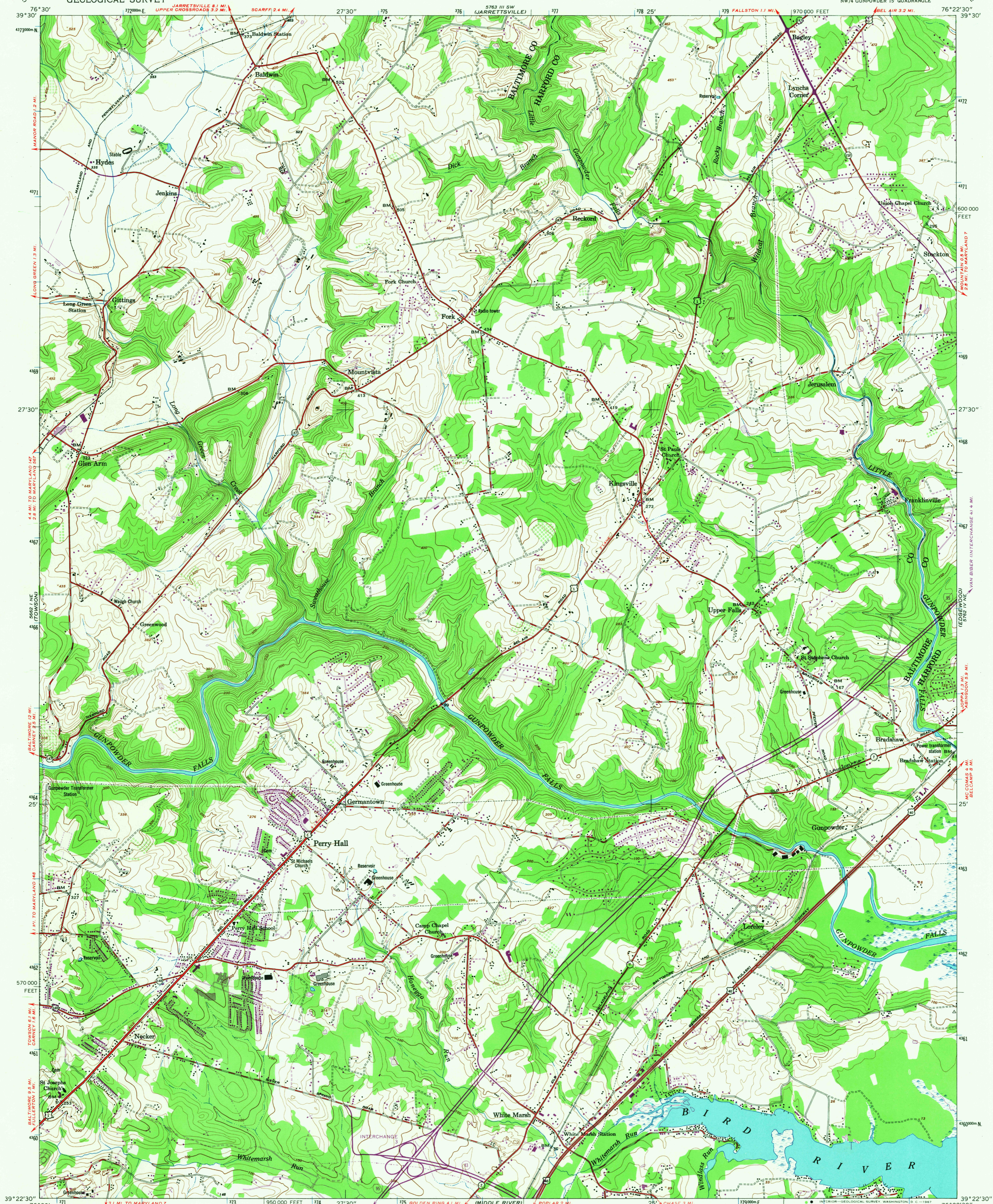
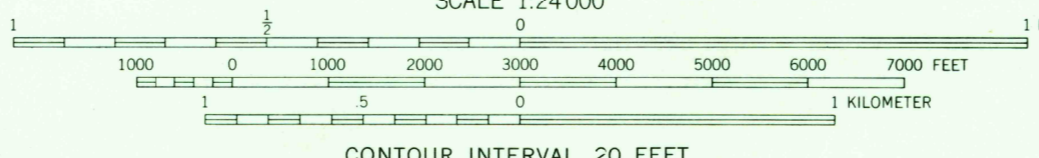
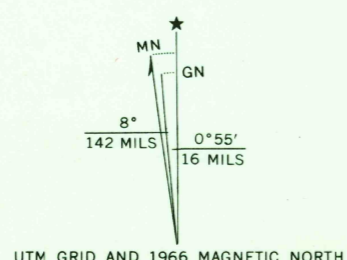


UNITED STATES
DEPARTMENT OF THE INTERIOR
GEOLOGICAL SURVEY

WHITE MARSH QUADRANGLE
MARYLAND
7.5 MINUTE SERIES (TOPOGRAPHIC)
NW/4 GUNPOWDER 15' QUADRANGLE



Mapped by the Army Map Service
Published for civil use by the Geological Survey
Control by USC&GS and USGS
Topography from aerial photographs by multiplex methods
Aerial photographs taken 1947. Field checked 1949
Polyconic projection. 1927 North American datum
10,000-foot grid based on Maryland coordinate system
1000-meter Universal Transverse Mercator grid ticks,
zone 18, shown in blue
No distinction made between barns, dwellings,
commercial and industrial buildings
Revisions shown in purple compiled by the Geological
Survey from aerial photographs taken 1966
This information is not field checked



THIS MAP COMPLIES WITH NATIONAL MAP ACCURACY STANDARDS
FOR SALE BY U.S. GEOLOGICAL SURVEY, WASHINGTON, D.C. 20242
A FOLDER DESCRIBING TOPOGRAPHIC MAPS AND SYMBOLS IS AVAILABLE ON REQUEST

USGS
Historical File
Topographic Division



ROAD CLASSIFICATION
Heavy-duty ——— Light-duty ———
Medium-duty ——— Unimproved dirt ———
Interstate Route U.S. Route State Route

U.S.G.S.
FILE COPY
TOPOGRAPHIC DIVISION

WHITE MARSH, MD.
NW/4 GUNPOWDER 15' QUADRANGLE
N3922.5-W7622.5/7.5
1951
PHOTOREVISED 1966
AMS 5762 IV NW-SERIES V833

2080
AUG 8 1967