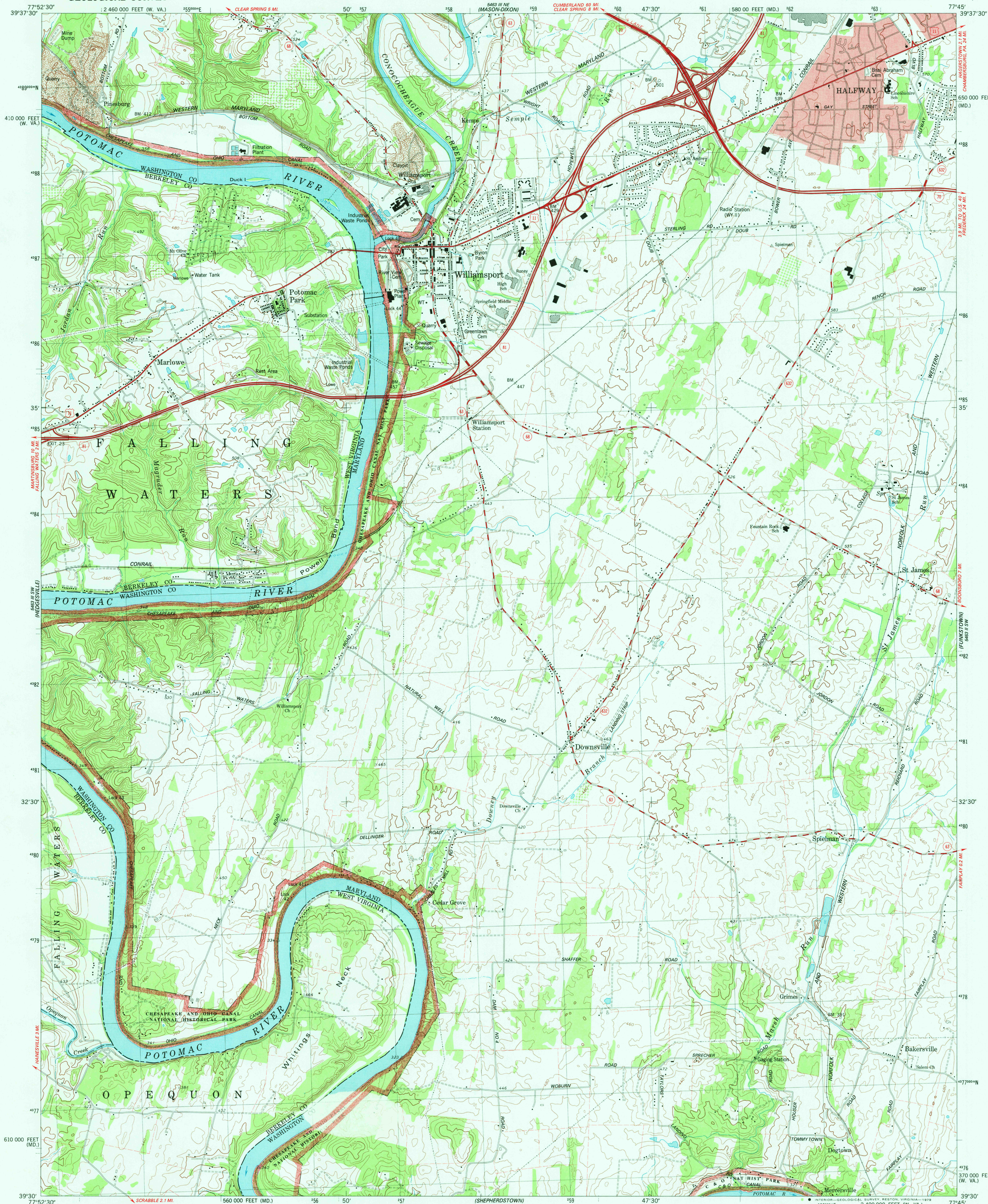


UNITED STATES
DEPARTMENT OF THE INTERIOR
GEOLOGICAL SURVEY

STATE OF WEST VIRGINIA
REPRESENTED BY THE
STATE OF WEST VIRGINIA GEOLOGICAL SURVEY
AND OTHER STATE AGENCIES

WILLIAMSPORT QUADRANGLE
MARYLAND—WEST VIRGINIA
7.5 MINUTE SERIES (TOPOGRAPHIC)
SE/4 WILLIAMSPORT 15' QUADRANGLE



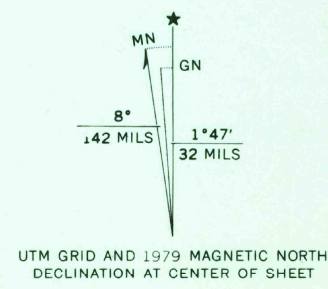
Mapped, edited, and published by the Geological Survey

Control by USGS and NOS/NOAA

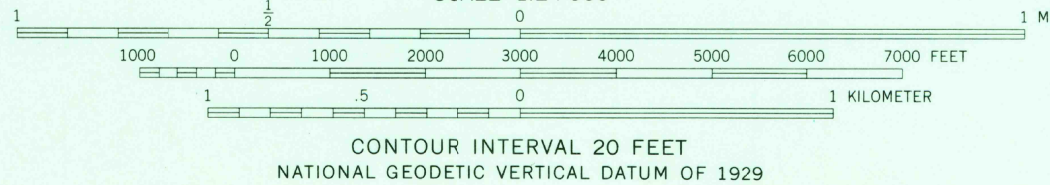
Topography by photogrammetric methods from aerial photographs taken 1974. Field checked 1974. Map edited 1979. Supersedes map dated 1971.

Projection: Maryland coordinate system (Lambert conformal conic)
10,000-foot grid ticks based on Maryland coordinate system and West Virginia coordinate system, north zone
1000-meter Universal Transverse Mercator grid, zone 18
1927 North American datum

Red tint indicates areas in which only landmark buildings are shown
Fine red dashed lines indicate selected fence and field lines where generally visible on aerial photographs. This information is unchecked
There may be private inholdings within the boundaries of the National or State reservations shown on this map



UTM GRID AND 1979 MAGNETIC NORTH DECLINATION AT CENTER OF SHEET



CONTOUR INTERVAL 20 FEET
NATIONAL GEODETIC VERTICAL DATUM OF 1929

THIS MAP COMPLIES WITH NATIONAL MAP ACCURACY STANDARDS
FOR SALE BY U. S. GEOLOGICAL SURVEY, RESTON, VIRGINIA 22092
A FOLDER DESCRIBING TOPOGRAPHIC MAPS AND SYMBOLS IS AVAILABLE ON REQUEST



QUADRANGLE LOCATION

ROAD CLASSIFICATION
Primary highway, hard surface
Secondary highway, hard surface
Unimproved road
Interstate Route
U. S. Route
State Route

WILLIAMSPORT, MD.—W. VA.
8R/4 WILLIAMSPORT 15' QUADRANGLE
N3930—W7745

1979
DMA 5463 III SE-SERIES V833

MAR 1 1983
3100