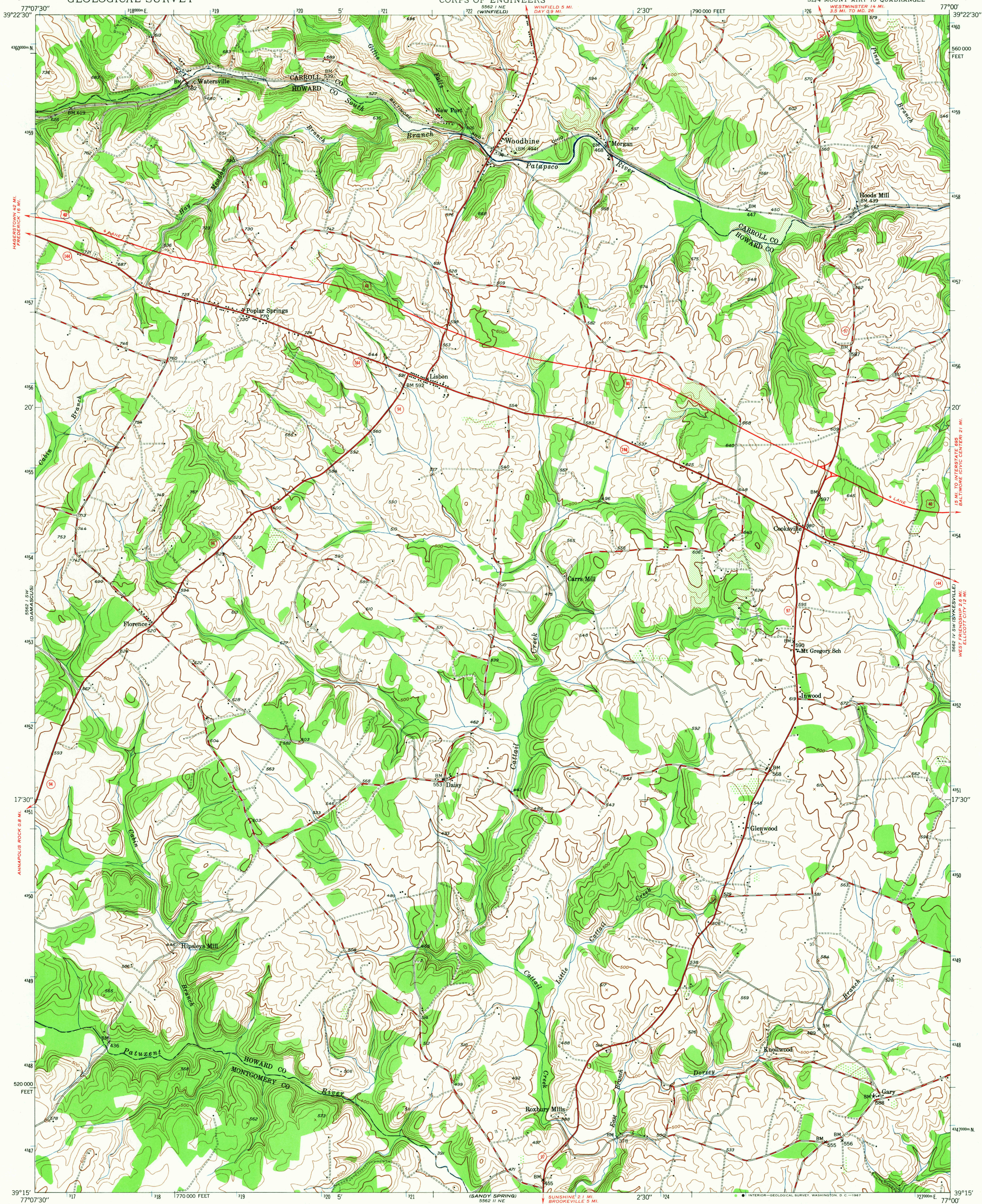


UNITED STATES
DEPARTMENT OF THE INTERIOR
GEOLOGICAL SURVEY

UNITED STATES
DEPARTMENT OF THE ARMY
CORPS OF ENGINEERS

WOODBINE QUADRANGLE
MARYLAND
7.5 MINUTE SERIES (TOPOGRAPHIC)
SE/4 MOUNT AIRY 15' QUADRANGLE



Map by U.S. Forest Service
Edited and published by the Geological Survey
Control by USGS, USC&GS, USFS, and WSSD
Topography from aerial photographs by KEK plotter 1944
Aerial photographs taken 1943-1945. Field check 1945
Polyconic projection. 1927 North American datum
10,000-foot grid based on Maryland coordinate system
1000-meter Universal Transverse Mercator grid ticks,
zone 18, shown in blue

UTM GRID AND 1945 MAGNETIC NORTH
DECLINATION AT CENTER OF SHEET

SCALE 1:24,000
1 0 1000 2000 3000 4000 5000 6000 7000 FEET
1 0 1 2 KILOMETER
CONTOUR INTERVAL 20 FEET
DATUM IS MEAN SEA LEVEL

USGS
Historical File
Topographic Division



ROAD CLASSIFICATION
Heavy-duty ——— Light-duty ———
Medium-duty ——— Unimproved dirt ———
U.S. Route ——— State Route ———

U.S.G.S.

TOPOGRAPHIC DIVISION

WOODBINE, MD.
SE/4 MOUNT AIRY 15' QUADRANGLE
N3915-W7700/7.5

1945
AMS 5562 I SE-SERIES V833

THIS MAP COMPLIES WITH NATIONAL MAP ACCURACY STANDARDS
FOR SALE BY U.S. GEOLOGICAL SURVEY, WASHINGTON, D.C. 20242
A FOLDER DESCRIBING TOPOGRAPHIC MAPS AND SYMBOLS IS AVAILABLE ON REQUEST

5715
APR 21 1967