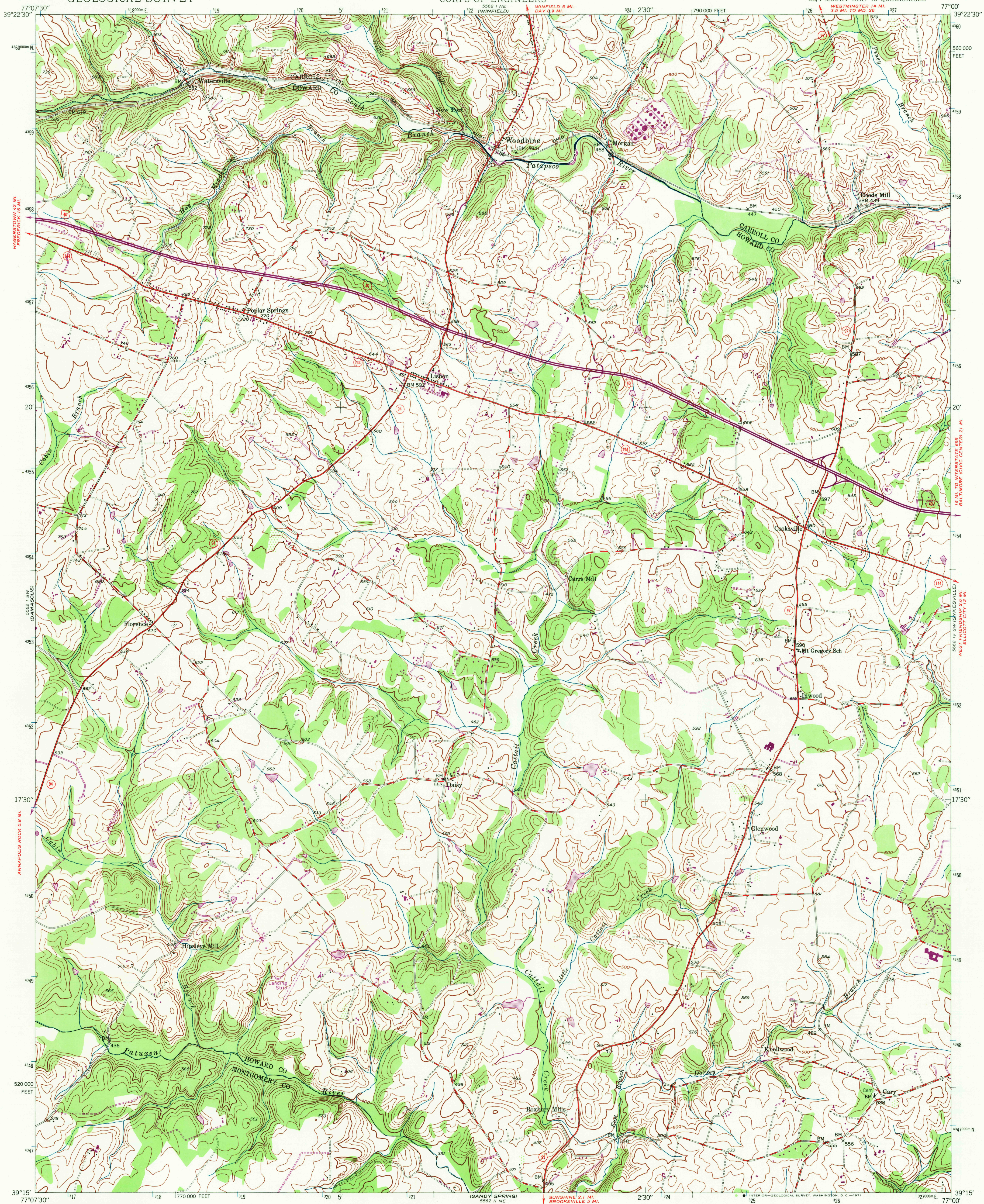


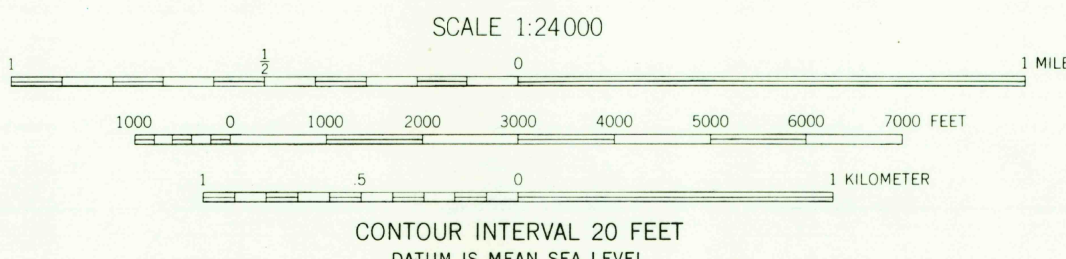
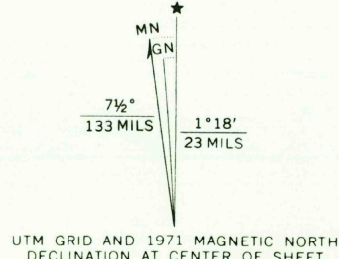
UNITED STATES  
DEPARTMENT OF THE INTERIOR  
GEOLOGICAL SURVEY

UNITED STATES  
DEPARTMENT OF THE ARMY  
CORPS OF ENGINEERS

WOODBINE QUADRANGLE  
MARYLAND  
7.5 MINUTE SERIES (TOPOGRAPHIC)  
SE/4 MOUNT AIRY 15' QUADRANGLE



Mapped by U.S. Forest Service  
Edited and published by the Geological Survey  
Control by USGS, USC&GS, USFS, and WSSD  
Topography from aerial photographs by KEK plotter 1944  
Aerial photographs taken 1943-1945. Field check 1945  
Polyconic projection, 1927 North American datum  
10,000-foot grid based on Maryland coordinate system  
1000-meter Universal Transverse Mercator grid ticks,  
zone 18, shown in blue  
Revisions shown in purple compiled by the Geological  
Survey from aerial photographs taken 1971. This  
information not field checked



ROAD CLASSIFICATION  
Heavy-duty ——— Light-duty ———  
Medium-duty ——— Unimproved dirt ———  
U.S. Route ——— State Route ———  
Interstate Route ———  
WOODBINE, MD.  
SE/4 MOUNT AIRY 15' QUADRANGLE  
N3915-W7700/7.5

THIS MAP COMPLIES WITH NATIONAL MAP ACCURACY STANDARDS  
FOR SALE BY U.S. GEOLOGICAL SURVEY, WASHINGTON, D.C. 20242  
A FOLDER DESCRIBING TOPOGRAPHIC MAPS AND SYMBOLS IS AVAILABLE ON REQUEST

1945  
PHOTOREVISED 1971  
AMS 5562 I SE-SERIES V833

4015  
NOV 17 1971  
USGS  
HISTORICAL FILE  
TOPOGRAPHIC DIVISION