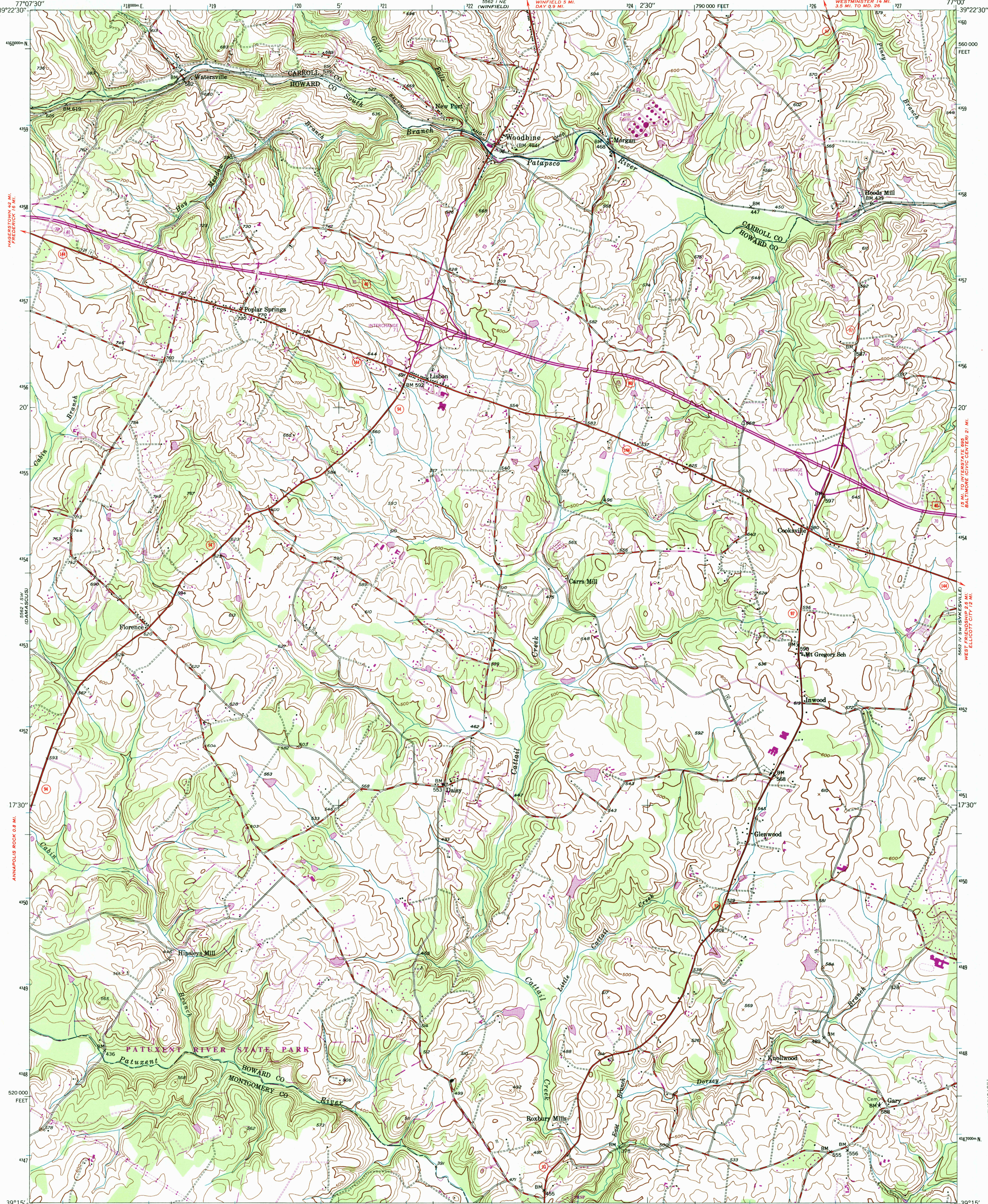


UNITED STATES
DEPARTMENT OF THE INTERIOR
GEOLOGICAL SURVEY

UNITED STATES
DEPARTMENT OF THE ARMY
CORPS OF ENGINEERS

WOODBINE QUADRANGLE
MARYLAND
7.5 MINUTE SERIES (TOPOGRAPHIC)
SE/4 MOUNT AIRY 15' QUADRANGLE
WESTMINSTER 14 MI.
3.5 MI. TO MD. 26



Mapped by U.S. Forest Service
Edited and published by the Geological Survey

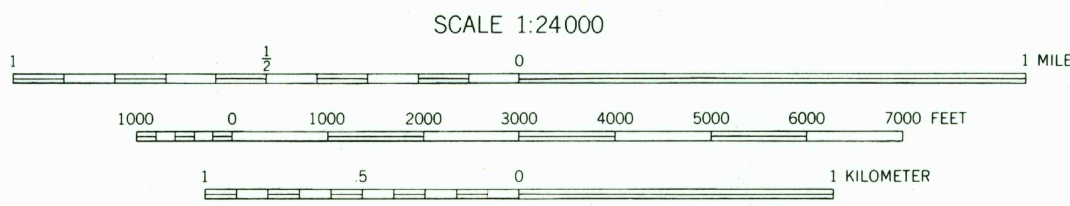
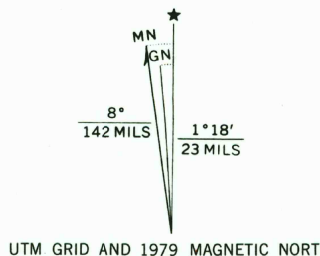
Control by USGS, USC&GS, USFS, and WSSD

Topography from aerial photographs by KEK plotter 1944
Aerial photographs taken 1943-1945. Field check 1945

Polyconic projection. 1927 North American datum
10,000-foot grid based on Maryland coordinate system
1000-meter Universal Transverse Mercator grid ticks,
zone 18, shown in blue

To place on the predicted North American Datum 1983
move the projection lines 8 meters south and
26 meters west as shown by dashed corner ticks

There may be private inholdings within the boundaries of
the National or State reservations shown on this map
Boundary lines shown in purple compiled from latest
information available from the controlling authority



THIS MAP COMPLIES WITH NATIONAL MAP ACCURACY STANDARDS
FOR SALE BY U. S. GEOLOGICAL SURVEY, RESTON, VIRGINIA 22092
A FOLDER DESCRIBING TOPOGRAPHIC MAPS AND SYMBOLS IS AVAILABLE ON REQUEST

Revisions shown in purple compiled by the Geological Survey from
aerial photographs taken 1977. This information not field checked
Map edited 1979



ROAD CLASSIFICATION
Heavy-duty ————
Medium-duty ————
Unimproved dirt ————
U. S. Route ————
State Route ————

WOODBINE, MD.
SE/4 MOUNT AIRY 15' QUADRANGLE
N3915-W7700/7.5

1945
PHOTOREVISED 1979
DMA 5562 I SE-SERIES V833

RECEIVED
FEB 28 1993
USGS MND
HISTORICAL MAP ARCHIVES

