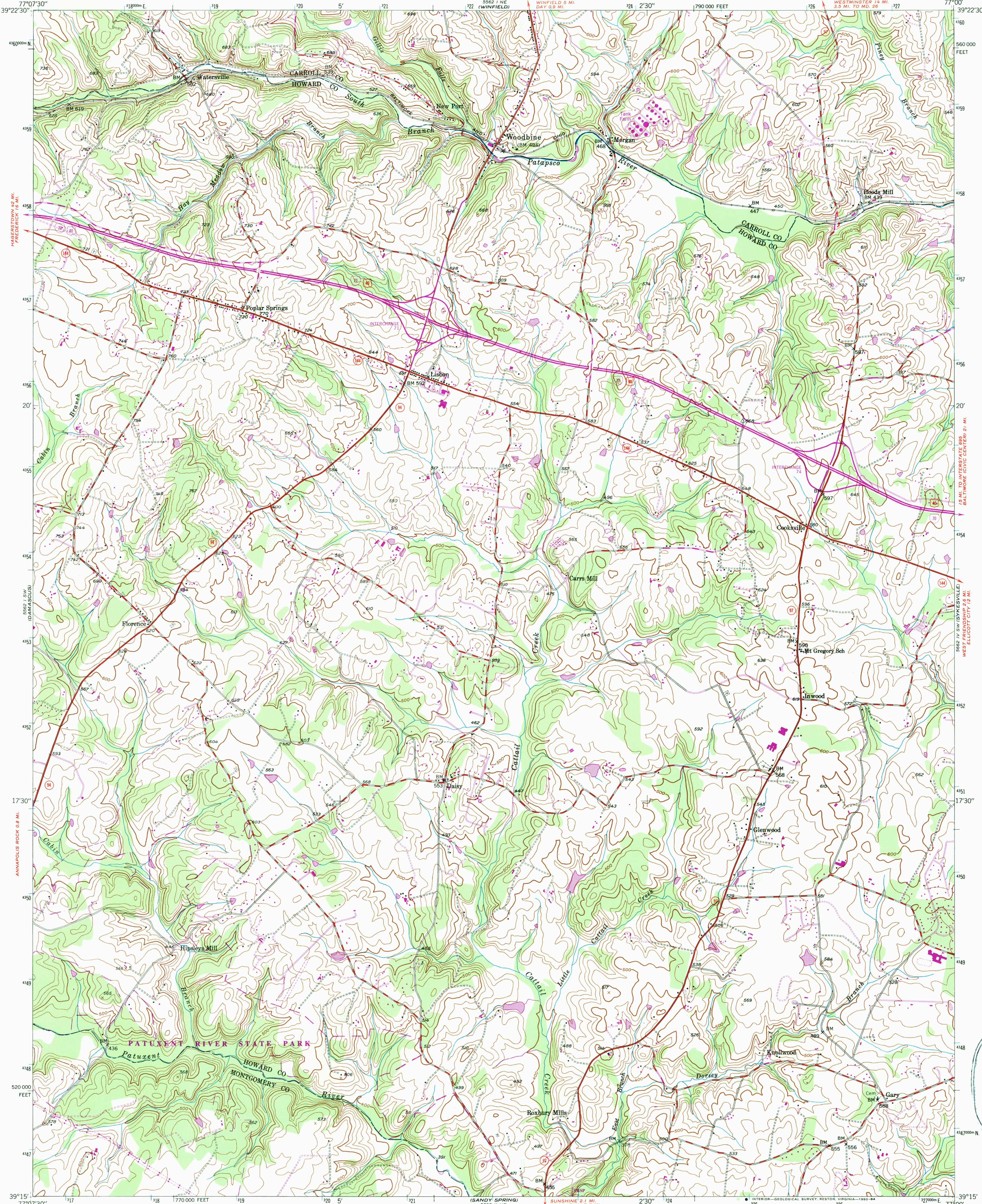


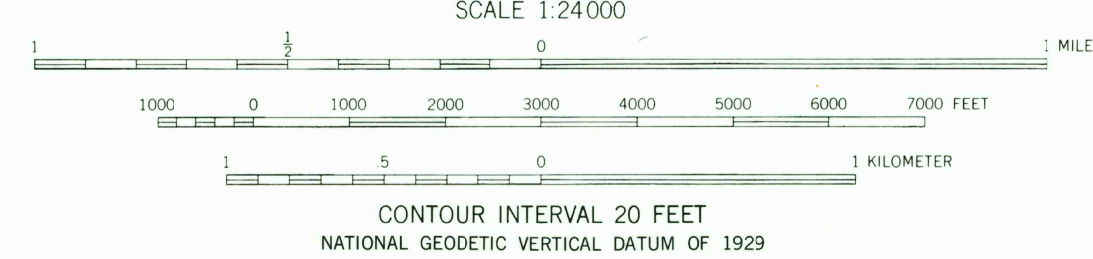
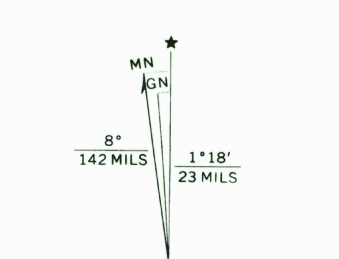
UNITED STATES  
DEPARTMENT OF THE INTERIOR  
GEOLOGICAL SURVEY

UNITED STATES  
DEPARTMENT OF THE ARMY  
CORPS OF ENGINEERS

WOODBINE QUADRANGLE  
MARYLAND  
7.5 MINUTE SERIES (TOPOGRAPHIC)  
SE/4 MOUNT AIRY 15' QUADRANGLE



Mapped by U.S. Forest Service  
Edited and published by the Geological Survey  
Control by USGS, USC&GS, USFS, and WSSD  
Topography from aerial photographs by KEK platter 1944  
Aerial photographs taken 1943-1945. Field check 1945  
Polyconic projection. 1927 North American datum  
10,000-foot grid based on Maryland coordinate system  
1000-meter Universal Transverse Mercator grid ticks,  
zone 18, shown in blue  
To place on the predicted North American Datum 1983  
move the projection lines 8 meters south and  
26 meters west as shown by dashed corner ticks  
There may be private inholdings within the boundaries of  
the National or State reservations shown on this map  
Boundary lines shown in purple compiled from latest  
information available from the controlling authority



ROAD CLASSIFICATION  
Heavy-duty ——— Light-duty ———  
Medium-duty ——— Unimproved dirt ———  
U.S. Route ——— State Route ———

WOODBINE, MD.  
SE/4 MOUNT AIRY 15' QUADRANGLE  
N3915-W7700/7.5

1945  
PHOTOREVISED 1979  
DMA 5562 1 SE-SERIES V833

