

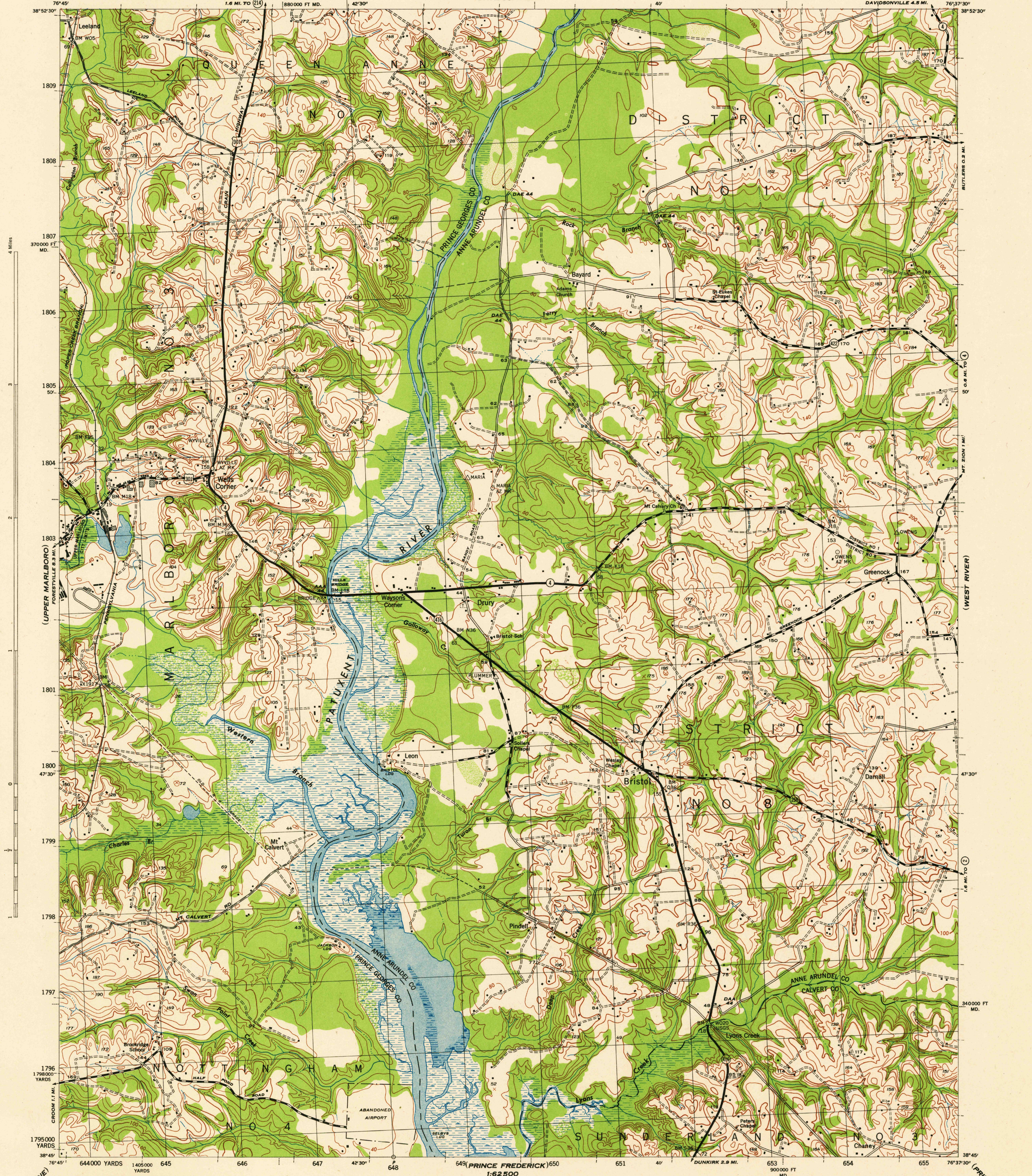
MARYLAND
SCALE 1:31680

WAR DEPARTMENT
CORPS OF ENGINEERS, U. S. ARMY

BRISTOL QUADRANGLE
7½-MINUTE SERIES

(DAVIDSONVILLE)

(SOUTH RIVER)



Mapped by the U. S. Coast and Geodetic Survey under the direction of the Chief of Engineers, U. S. Army, 1942.
Control by U. S. G. S. and U. S. C. & G. S.
Planimetry by the U. S. C. & G. S. from 1938, 1942, 1943 air photographs.
Planetable topography and field edit by U. S. C. & G. S., 1944.
Polyconic projection, North American datum of 1927.
Recoverable horizontal control stations of less than third order accuracy are shown by circles.

ROAD CLASSIFICATION 1944

Dependable hard-surface, heavy-duty road. Loose-surface graded, dry-weather road. U. S. route State route More than two lanes indicated by note along road with tick at point of change. 3 LANE 1 LANE

THIS MAP COMPLIES WITH THE NATIONAL STANDARD MAP ACCURACY REQUIREMENTS

Scale 1:31680

CONTOUR INTERVAL 20 FEET
DATUM IS MEAN SEA LEVEL

ONE THOUSAND YARD GRID COMPUTED FROM "GRID SYSTEM FOR PROGRESSIVE MAPS IN THE U. S." ZONE A, U. S. C. & G. S. SPECIAL PUBLICATION NO. 50. THE "10" GRID IS INDICATED BY DASHED TICKS. THE LAST THREE DIGITS OF THE GRID NUMBERS ARE OMITTED. THE STATE GRID IS INDICATED AT 10,000 FOOT INTERVALS.

NOTE: OFFICERS USING THIS MAP WILL MAKE REVISIONS AND ADDITIONS WHICH COME TO THEIR ATTENTION AND MAIL DIRECT TO "THE CHIEF OF ENGINEERS, WASHINGTON, D. C."

REPRODUCED BY THE U. S. COAST AND GEODETIC SURVEY, AMS NO. 121042

WOODLAND CLASSIFICATION

Dense woodland Dense brush Scattered brush and trees Orchard Marsh or swamp Low ground, intermittently flooded

APPROXIMATE MEAN DECLINATION 1943
NO ANNUAL MAGNETIC CHANGE

Use diagram only to obtain numerical values. To determine magnetic north line, connect the point "N" on the north edge of the map with the value of the angle between GRID NORTH and MAGNETIC NORTH, as plotted on the degree scale at the north edge of the map.

BRISTOL, MD.
N3845-W7637.5/7.5
EDITION OF 1944

USCS
Historical File
Topographic Division