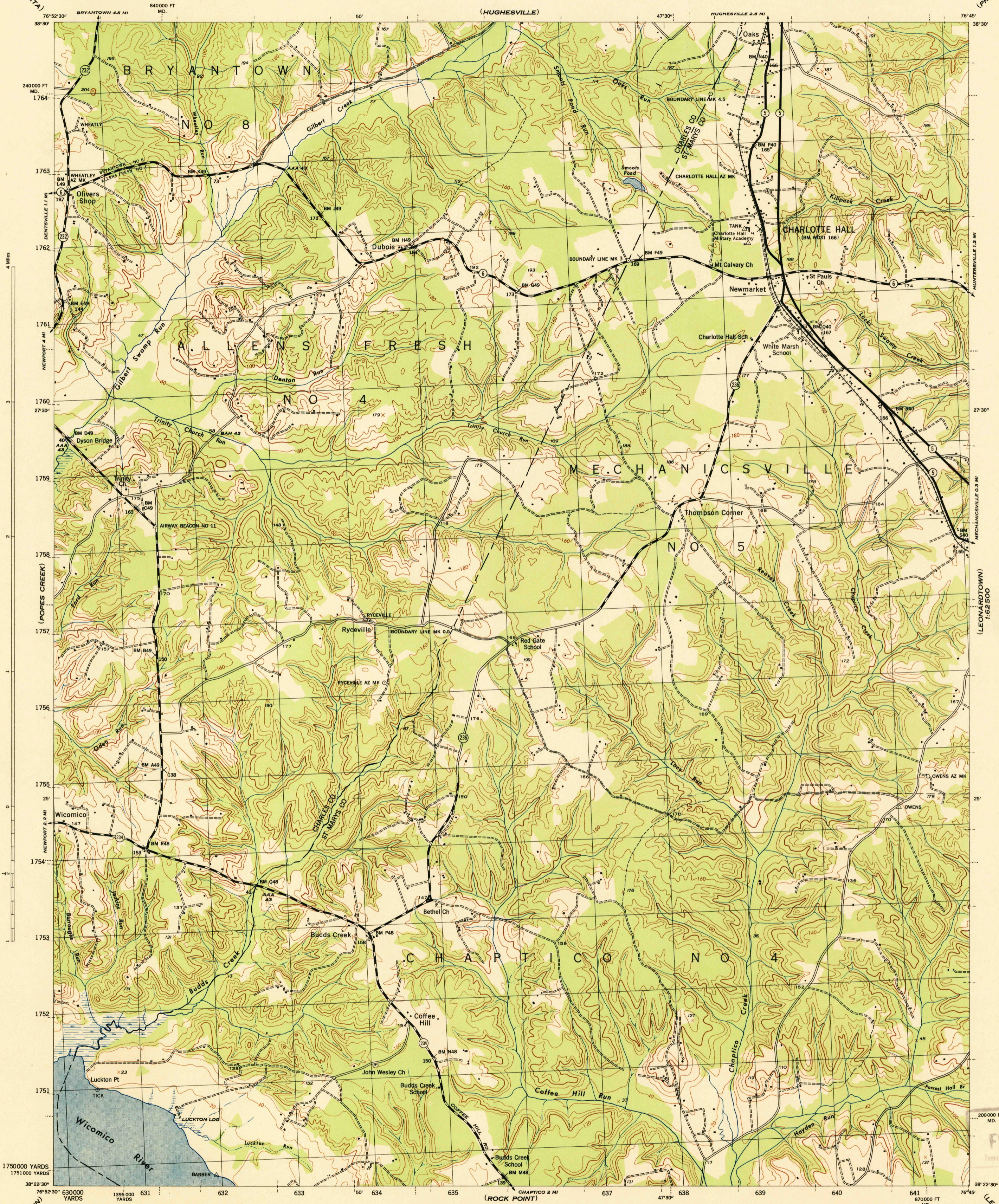


(PRINCE FREDERICK)
1:62,500



(LEONARDTOWN)
1:62,500

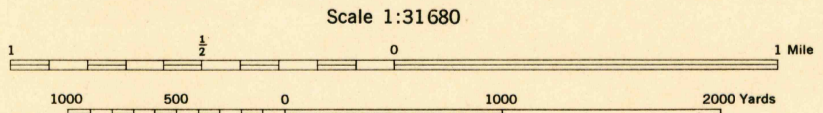
(LEONARDTOWN)
1:62,500

War Department mapping project.
Under direction of the Chief of Engineers.
Control by the U. S. Coast and Geodetic Survey.
Planimetry compiled from air photographs by U. S. Coast and Geodetic Survey.
Planimetric topography and field edit by U. S. Coast and Geodetic Survey, 1943.
Polyconic projection, North American datum of 1927.
This map complies with the national standard map accuracy requirements.

ROAD CLASSIFICATION 1943

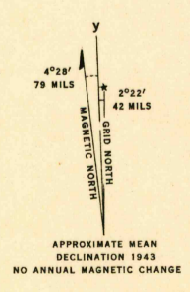
Dependable hard-surface, heavy-duty road.	Loose-surface graded, dry-weather road.	U. S. route 74
Secondary, hard-surface, all-weather road.	Dirt road.	State route 26

More than two lanes indicated by note along road with tick at point of change **3 LANE 1 LANE**



CONTOUR INTERVAL 20 FEET
DATUM IS MEAN SEA LEVEL

ONE THOUSAND YARD GRID COMPUTED FROM GRID SYSTEM FOR PROGRESSIVE MAPS IN THE U. S. ZONE A, U. S. C. & G. S. SPECIAL PUBLICATION NO. 59
THE "M" GRID IS INDICATED BY DASHED TICKS
THE LAST THREE DIGITS OF THE GRID NUMBER ARE OMITTED
THE STATE GRIDS ARE INDICATED AT 10,000 FOOT INTERVALS
NOTE: OFFICERS USING THIS MAP WILL MAKE HEREON CORRECTIONS AND ADDITIONS WHICH COME TO THEIR ATTENTION AND SHALL DIRECT TO "THE CHIEF OF ENGINEERS, WASHINGTON, D. C."



REPRODUCED BY THE U. S. COAST AND GEODETIC SURVEY (W & H) 1943
ANS NO. 120732

Recoverable horizontal control stations of less than third order accuracy are shown by circles.

CHARLOTTE HALL, MD.
N3822.5W7645/7.5

USCS
Historical File
Topographic Division

U.S.G.S.
FILE COPY
Inventory and Control