

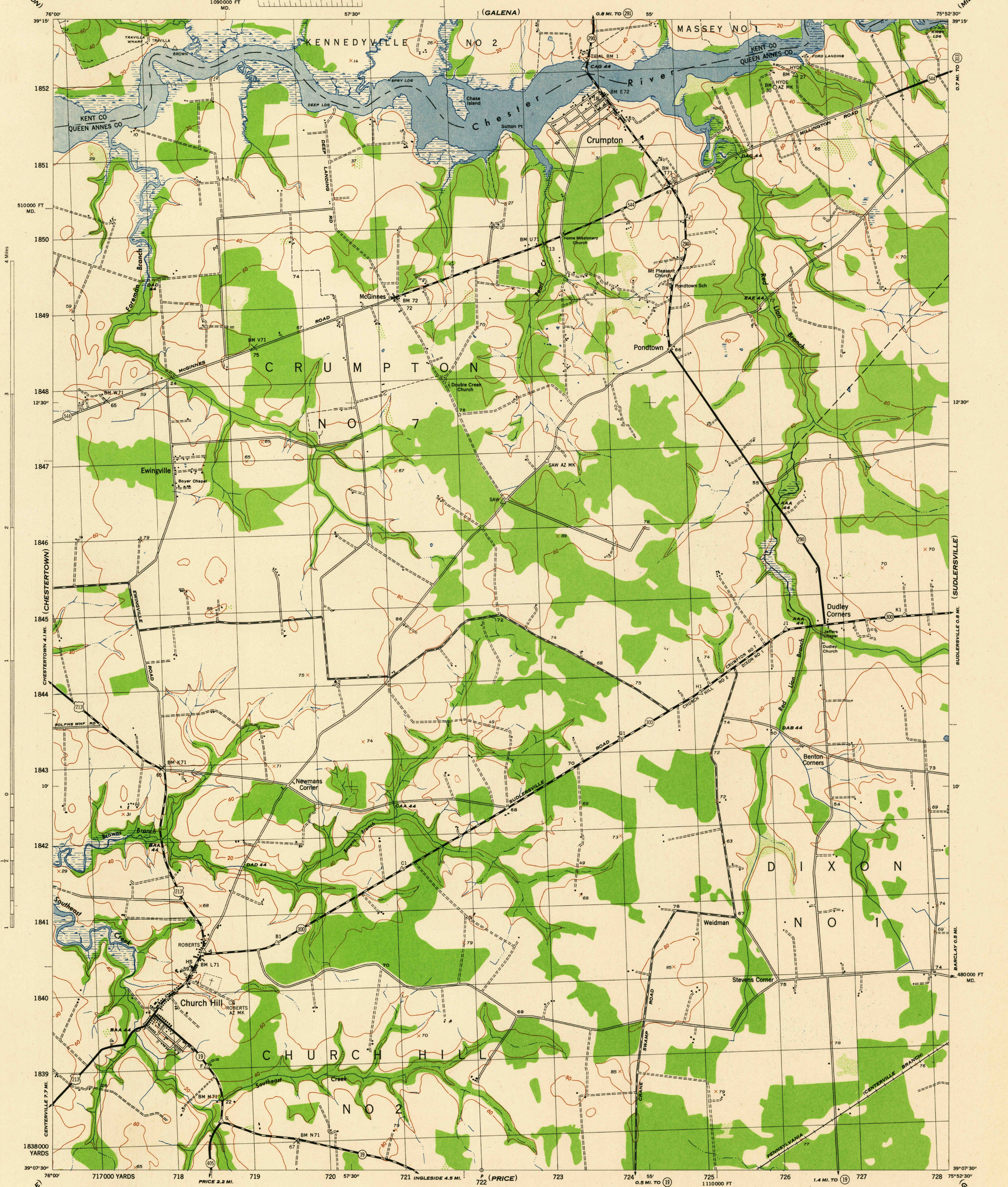
(BETTERTON)

MARYLAND
SCALE 1:31680

WAR DEPARTMENT
CORPS OF ENGINEERS, U. S. ARMY

CHURCH HILL QUADRANGLE
7 1/2 - MINUTE SERIES

(MILLINGTON)



Mapped by the U. S. Coast and Geodetic Survey under the direction of the Chief of Engineers, U. S. Army, 1943.
Control by the U. S. Coast and Geodetic Survey.
Planimetry by U. S. C. & G. S. from 1942 air photographs.
Planetable topography and field edit by U. S. C. & G. S., 1944.
Polyconic projection, North American datum of 1927.
Recoverable horizontal control stations of less than third order accuracy are shown by circles.

ROAD CLASSIFICATION 1944

Dependable hard-surface, heavy-duty road. U. S. route 74
Loose-surface graded, dry-weather road. U. S. route 74
Secondary, hard-surface, all-weather road. State route 26
Dirt road. State route 26
More than two lanes indicated by note along road with tick at point of change. 3 LANE | 4 LANE
THIS MAP COMPLIES WITH THE NATIONAL STANDARD MAP ACCURACY REQUIREMENTS

Scale 1:31680

1 0 1000 2000 Yards

CONTOUR INTERVAL 20 FEET
DATUM IS MEAN SEA LEVEL

ONE THOUSAND YARD GRID COMPUTED FROM GRID SYSTEM FOR PROGRESSIVE MAPS IN THE U. S. - ZONE A. U. S. C. & G. S. SPECIAL PUBLICATION NO. 59
THE LAST THREE DIGITS OF THE GRID NUMBERS ARE OMITTED
THE STATE GRIDS ARE INDICATED AT 10,000 FOOT INTERVALS
NOTE: OFFICERS USING THIS MAP WILL MAKE GREEN CORRECTIONS AND ADDITIONS WHICH COME TO THEIR ATTENTION AND SHALL DIRECT TO THE CHIEF OF ENGINEERS, WASHINGTON, D. C.

Scale 1:31680

1 0 1000 2000 Yards

CONTOUR INTERVAL 20 FEET
DATUM IS MEAN SEA LEVEL

ONE THOUSAND YARD GRID COMPUTED FROM GRID SYSTEM FOR PROGRESSIVE MAPS IN THE U. S. - ZONE A. U. S. C. & G. S. SPECIAL PUBLICATION NO. 59
THE LAST THREE DIGITS OF THE GRID NUMBERS ARE OMITTED
THE STATE GRIDS ARE INDICATED AT 10,000 FOOT INTERVALS
NOTE: OFFICERS USING THIS MAP WILL MAKE GREEN CORRECTIONS AND ADDITIONS WHICH COME TO THEIR ATTENTION AND SHALL DIRECT TO THE CHIEF OF ENGINEERS, WASHINGTON, D. C.

Use diagram only to obtain numerical values.
To determine magnetic north line, connect the pivot point "P" on the south edge of the map with the value of the angle between grid and magnetic north, as plotted on the degree scale of the north edge of the map.

APPROXIMATE MEAN DECLINATION 1943
NO ANNUAL MAGNETIC CHANGE

WOODLAND CLASSIFICATION

Dense woodland Dense brush
Scattered brush and trees Orchard
Marsh or swamp Low ground, intermittently flooded

REPRODUCED BY THE U. S. COAST AND GEODETIC SURVEY, AMS NO. 121024

USCS
Historical File
Topographic Division

CHURCH HILL, MD.
N3907.5-W7552.5/7.5
EDITION OF 1944

U. S. G. S.
FILE COPY
Inspection and Rating

(CENTERVILLE)

(GOLDSBORO)