

MARYLAND

SCALE 1:31 680

WAR DEPARTMENT
CORPS OF ENGINEERS, U. S. ARMY

CLAIBORNE QUADRANGLE

7 1/2 - MINUTE SERIES

(ANNAPOLIS)

(QUEENSTOWN)



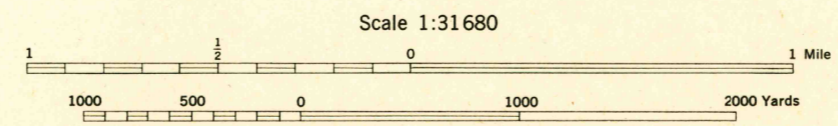
War Department mapping project.
Under direction of the Chief of Engineers.
Control by the U. S. Coast and Geodetic Survey.
Planimetry compiled from air photographs by U. S. Coast and Geodetic Survey.
Planetable topography and field edit by U. S. Coast and Geodetic Survey, 1942.

ROAD CLASSIFICATION

Dependable hard-surface, heavy-duty road.	Loose-surface graded, dry-weather road.	U. S. route
Secondary, hard-surface, all-weather road.	Dirt road.	State route

More than two lanes indicated by note along road with tick at point of change. **LANE & LANE**

Road data 1942

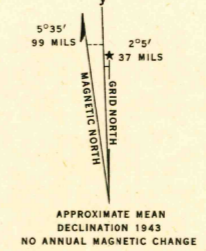


MAXIMUM GROUND ELEVATION 20 FEET
DATUM IS MEAN SEA LEVEL

ONE THOUSAND YARD GRID COMPUTED FROM "GRID SYSTEM FOR PROGRESSIVE MAPS IN THE U. S." ZONE A. U. S. C. & G. S. SPECIAL PUBLICATION NO. 59

THE LAST THREE DIGITS OF THE GRID NUMBERS ARE OMITTED

NOTE: OFFICERS USING THIS MAP SHALL MAKE CORRECTIONS AND ADJUSTMENTS WHICH COME TO THEIR ATTENTION AND MAIL DIRECT TO: THE CHIEF OF ENGINEERS, WASHINGTON, D. C.



REPRODUCED BY THE U. S. COAST AND GEODETIC SURVEY 121045 1943

Polyconic projection. North American datum of 1927. Maryland coordinate system, single zone, is indicated by ticks outside the neat line at 10,000 foot intervals. Recoverable horizontal control stations of less than third order accuracy are shown by a circle. This map complies with the national standard map accuracy requirements.

CLAIBORNE, MD.
N3845-W7615/7.5

HISTORICAL FILES
(DO NOT REMOVE)