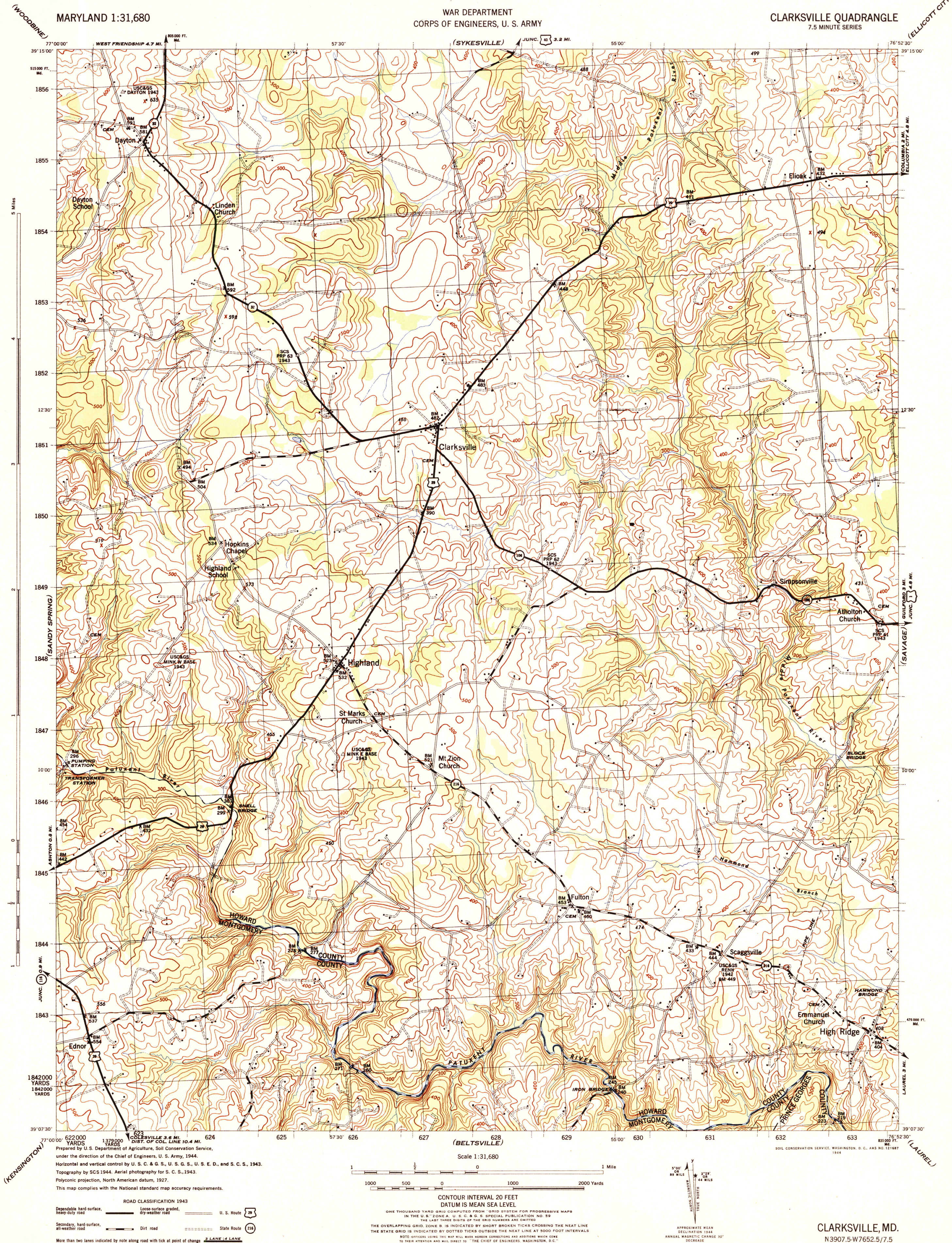


MARYLAND 1:31,680

WAR DEPARTMENT  
CORPS OF ENGINEERS, U. S. ARMY

CLARKSVILLE QUADRANGLE  
7.5 MINUTE SERIES



ROAD CLASSIFICATION 1943  
Dependable hard-surface, heavy-duty road  
Loose-surface graded, dry-weather road  
Secondary, hard-surface, all-weather road  
Dirt road  
U. S. Route  
State Route  
More than two lanes indicated by note along road with tick at point of change

Scale 1:31,680  
1 0 1000 2000 Yards  
1 0 1000 2000 Feet

CONTOUR INTERVAL 20 FEET  
DATUM IS MEAN SEA LEVEL

ONE THOUSAND-YARD GRID COMPUTED FROM GRID SYSTEM FOR PROGRESSIVE MAPS IN THE U. S. ZONE A, U. S. G. S. SPECIAL PUBLICATION NO. 59. THE LAST THREE DIGITS OF THE GRID NUMBERS ARE OMITTED.  
THE OVERLAPPING GRID, ZONE B, IS INDICATED BY SHORT BROKEN TICKS CROSSING THE NEAT LINE.  
THE STATE GRID IS INDICATED BY DOTTED TICKS OUTSIDE THE NEAT LINE AT 5000-FOOT INTERVALS.  
NOTE: OFFICERS USING THIS MAP WILL MARK HEREON CORRECTIONS AND ADDITIONS WHICH COME TO THEIR ATTENTION AND MAIL DIRECT TO "THE CHIEF OF ENGINEERS, WASHINGTON, D. C."

5°00' 89 MILS  
5°29' 108 MILS  
TRUE NORTH  
APPROXIMATE MEAN DECLINATION 1944  
ANNUAL MAGNETIC CHANGE 30' DECREASE

CLARKSVILLE, MD.  
N 3907.5-W 7652.5/7.5