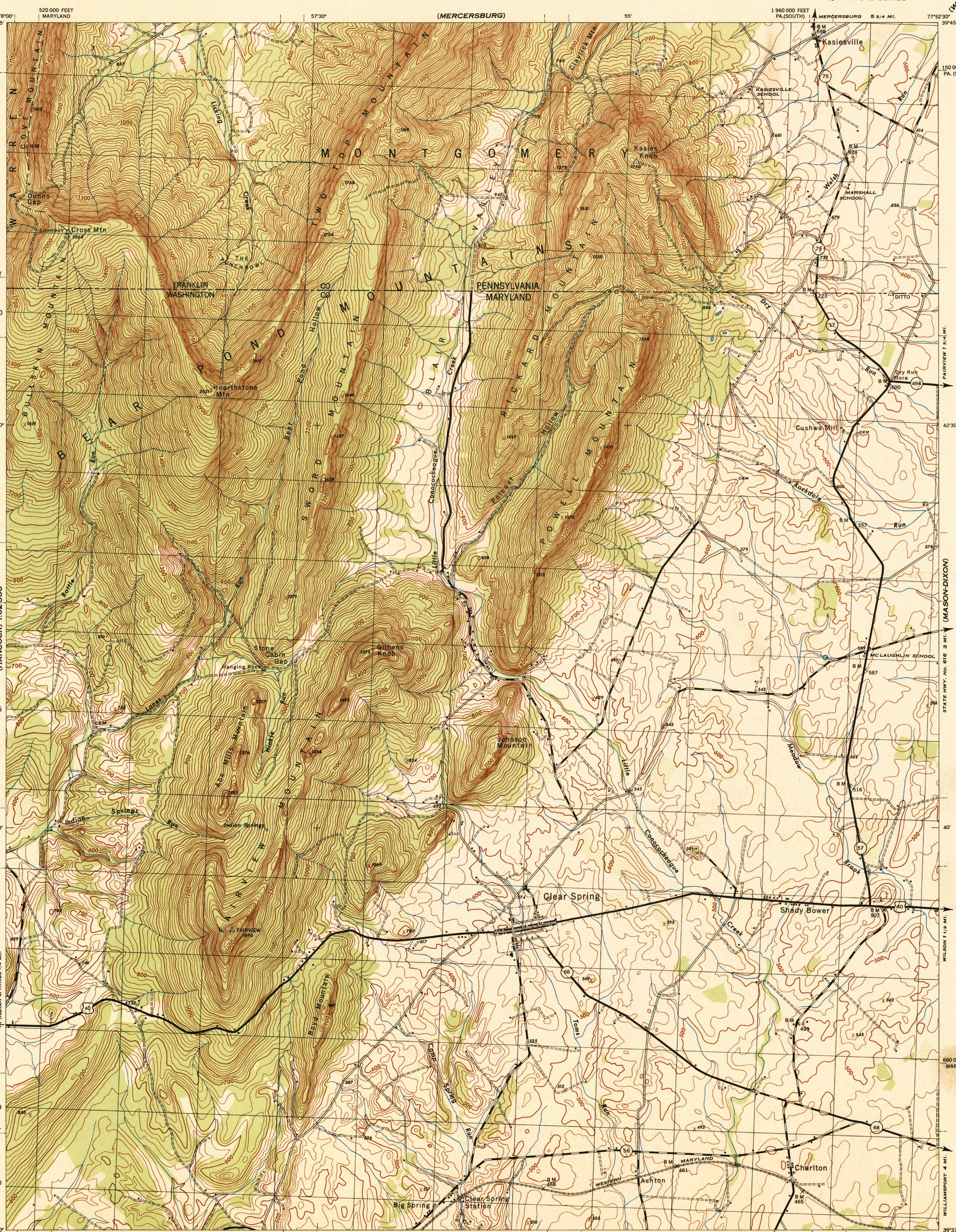


(NEEDMORE) 1:62,500

(WILLIAMSON)

5 Miles  
690 000 FEET  
MARYLAND  
1910  
42°30'  
3  
2  
1  
0  
INDIAN SPRINGS 1/4 MI.  
1905  
40'  
1900  
110 000 FEET  
PA. (SOUTH)  
1899 000  
YARDS  
39°37'30"

(HANCOCK) 1:62,500



1282000 YARDS  
1930 000 FEET  
PA. (SOUTH)  
Prepared by U. S. Department of Agriculture, Forest Service,  
under the direction of the Chief of Engineers, U. S. Army, 1944.  
Control by U. S. Coast and Geodetic Survey, U. S. Geological Survey,  
and Forest Service.  
Topography by Forest Service stereophotogrammetric methods KEK plotter.  
Photography by Soil Conservation Service and Forest Service, 1943.  
Polyconic projection, 1927 North American datum.  
**ROAD CLASSIFICATION**  
Dependable hard-surface, heavy-duty road. Loose-surface graded, dry weather road. U. S. Route 160  
Secondary hard-surface, all-weather road. Dirt road. State Route 30  
More than two lanes indicated by note along road with tick at point of change. 3 LANE 4 LANE  
THIS MAP COMPLIES WITH THE NATIONAL STANDARD MAP ACCURACY REQUIREMENTS.

Scale 1:1680  
1000 500 0 1000 2000 Yards  
CONTOUR INTERVAL 20 FEET  
DATUM IS MEAN SEA LEVEL (1929 ADJ.)  
ONE THOUSAND YARD GRID COMPUTED FROM "GRID SYSTEM FOR PROGRESSIVE MAPS  
IN THE U. S. ZONE B. U. S. C. & G. S. SPECIAL PUBLICATION NO. 59  
THE LAST THREE DIGITS OF THE GRID NUMBERS ARE OMITTED  
TEN THOUSAND FOOT GRIDS BASED ON MARYLAND AND PENNSYLVANIA (SOUTH ZONE) PLANE COORDINATE SYSTEMS  
NOTE: OFFICERS USING THIS MAP WILL MARK HEREON CORRECTIONS AND ADDITIONS WHICH COME  
TO THEIR ATTENTION AND MAIL DIRECT TO "THE CHIEF OF ENGINEERS, WASHINGTON, D. C."

APPROXIMATE MEAN  
DECLINATION 1944  
ANNUAL MAGNETIC CHANGE 1'  
DECREASE

USCS  
Historical File  
Topographic Division

CLEAR SPRING, MD.-PA.  
N3937.5-W7752.5/7.5

U. S. A.  
FILE COPY  
Inspection and Review