

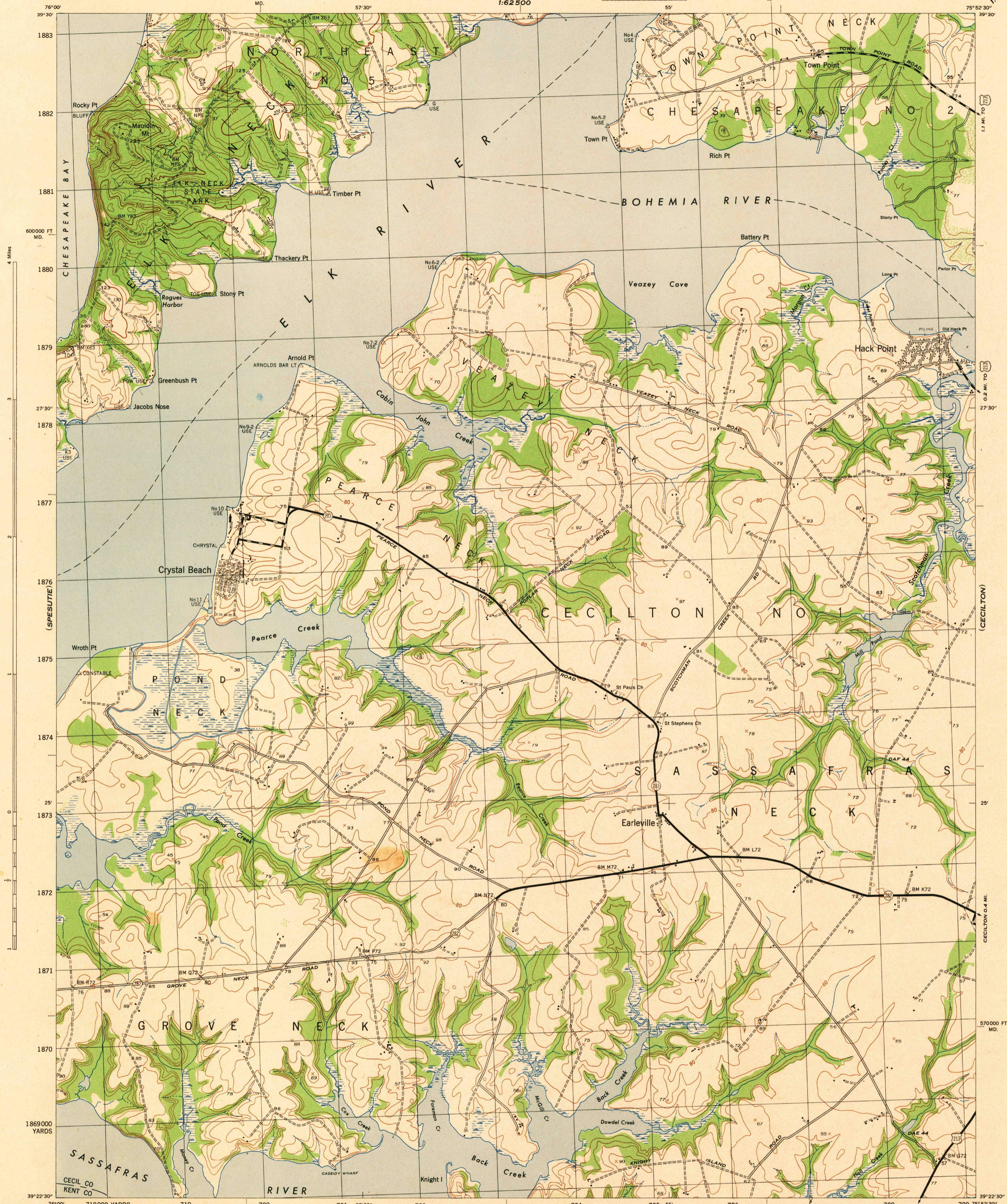
MARYLAND SCALE 1:31680
CECIL COUNTY

WAR DEPARTMENT
CORPS OF ENGINEERS, U. S. ARMY

EARLEVILLE QUADRANGLE
7½-MINUTE SERIES

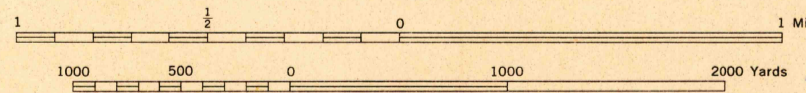
(ELKTON)
1:62500

(ELKTON)
1:62500



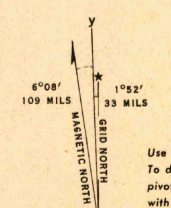
Maped by the U. S. Coast and Geodetic Survey under the direction of the Chief of Engineers, U. S. Army, 1943. Control by Natl Park Serv., U. S. E., and U. S. C. & G. S. Planimetry by the U. S. C. & G. S. from 1937 and 1942 air photographs. Planetable topography and field edit by U. S. C. & G. S., 1944. Polyconic projection, North American datum of 1927. Recoverable horizontal control stations of less than third order accuracy are shown by circles.

ROAD CLASSIFICATION 1944
Dependable hard surface, all-weather road. Loose surface graded, dry-weather road. U. S. route (74)
Secondary, hard surface, all-weather road. Dirt road. State route (26)
More than two lanes indicated by note along road with tick at point of change 3 LANE 4 LANE
THIS MAP COMPLIES WITH THE NATIONAL STANDARD MAP ACCURACY REQUIREMENTS



CONTOUR INTERVAL 20 FEET
DATUM IS MEAN SEA LEVEL

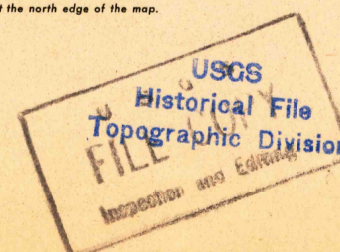
ONE THOUSAND YARD GRID COMPUTED FROM "GRID SYSTEM FOR PROGRESSIVE MAPS IN THE U. S." ZONE A U. S. C. & G. S. SPECIAL PUBLICATION NO. 59
THE LAST THREE DIGITS OF THE GRID NUMBERS ARE OMITTED
THE STATE GRID IS INDICATED AT 10,000 FOOT INTERVALS
NOTE: OFFICERS USING THIS MAP WILL MAKE NECESSARY CORRECTIONS AND EDITIONS SHOULD COME TO THEIR ATTENTION AND MAIL DIRECT TO "THE CHIEF OF ENGINEERS, WASHINGTON, D. C."



APPROXIMATE MEAN DECLINATION 1943
NO ANNUAL MAGNETIC CHANGE

WOODLAND CLASSIFICATION

Dense woodland	Dense brush
Scattered brush and trees	Orchard
Marsh or swamp	Low ground, intermittently flooded



EARLEVILLE, MD.
N3922.5-W7552.5/7.5
EDITION OF 1944