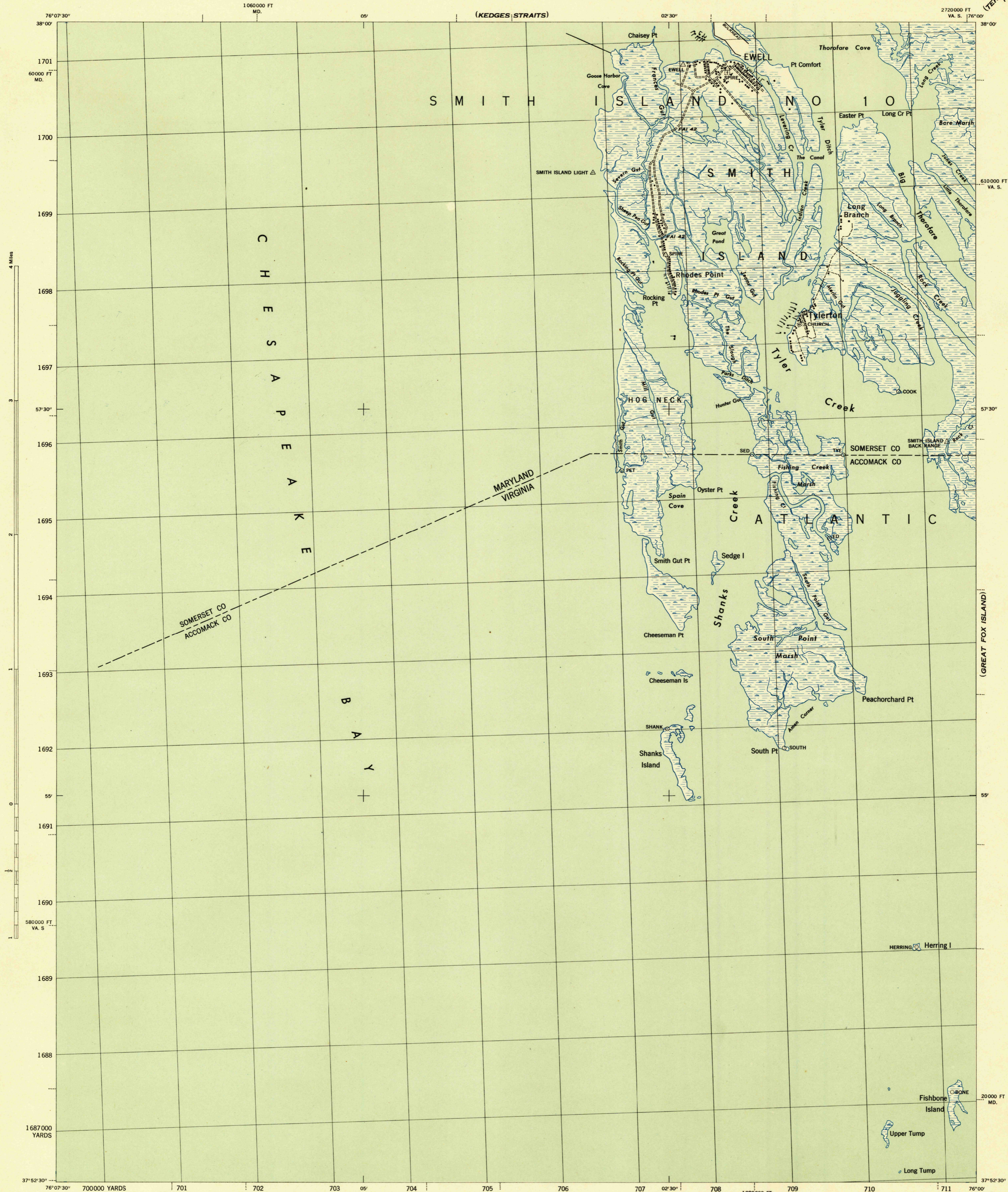


(TERRAPIN SAND POINT)

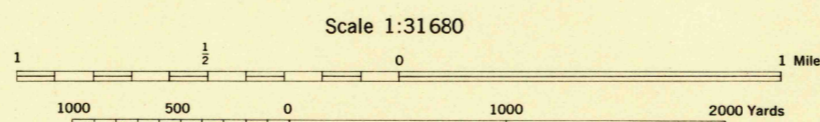


War Department mapping project.
Under direction of the Chief of Engineers,
Control by the U. S. Coast and Geodetic Survey.
Planimetry compiled from air photographs by U. S. Coast and Geodetic Survey.
Planimetric topography and field edit by U. S. Coast and Geodetic Survey, 1942.
Polyconic projection, North American datum of 1927.
This map complies with the national standard map accuracy requirements.

ROAD CLASSIFICATION 1942

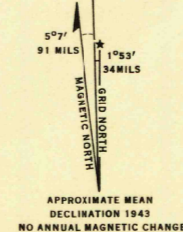
Dependable hard-surface, heavy-duty road.	Loose-surface graded, dry-weather road.	U. S. route (74)
Secondary, hard-surface, all-weather road.	Dirt road.	State route (23)

More than two lanes, indicated by note along road with tick at point of change. 3 LANE | 4 LANE



MAXIMUM GROUND ELEVATION 3 FEET
DATUM IS MEAN SEA LEVEL

ONE THOUSAND YARD GRID COMPUTED FROM "GRID SYSTEM FOR PROGRESSIVE MAPS
IN THE U. S. ZONE A U. S. C. & G. S. SPECIAL PUBLICATION NO. 59
THE LAST THREE DIGITS OF THE GRID NUMBERS ARE OMITTED
THE STATE GRIDS ARE INDICATED AT 10,000 FOOT INTERVALS
NOTE: OFFICERS USING THIS MAP WILL MARK HEREON CORRECTIONS AND ADDITIONS WHICH COME
TO THEIR ATTENTION AND SHALL DIRECT TO "THE CHIEF OF ENGINEERS, WASHINGTON, D. C."



REPRODUCED BY THE U. S. COAST AND GEODETIC SURVEY, (W & D) 1943
AMS NO. 120746

Recoverable horizontal control stations of less
than third order accuracy are shown by a circle.

EWELL, MD. - VA.
N3752.5-W7600/7.5

(TANGIER ISLAND)