

(FOWLING CREEK)

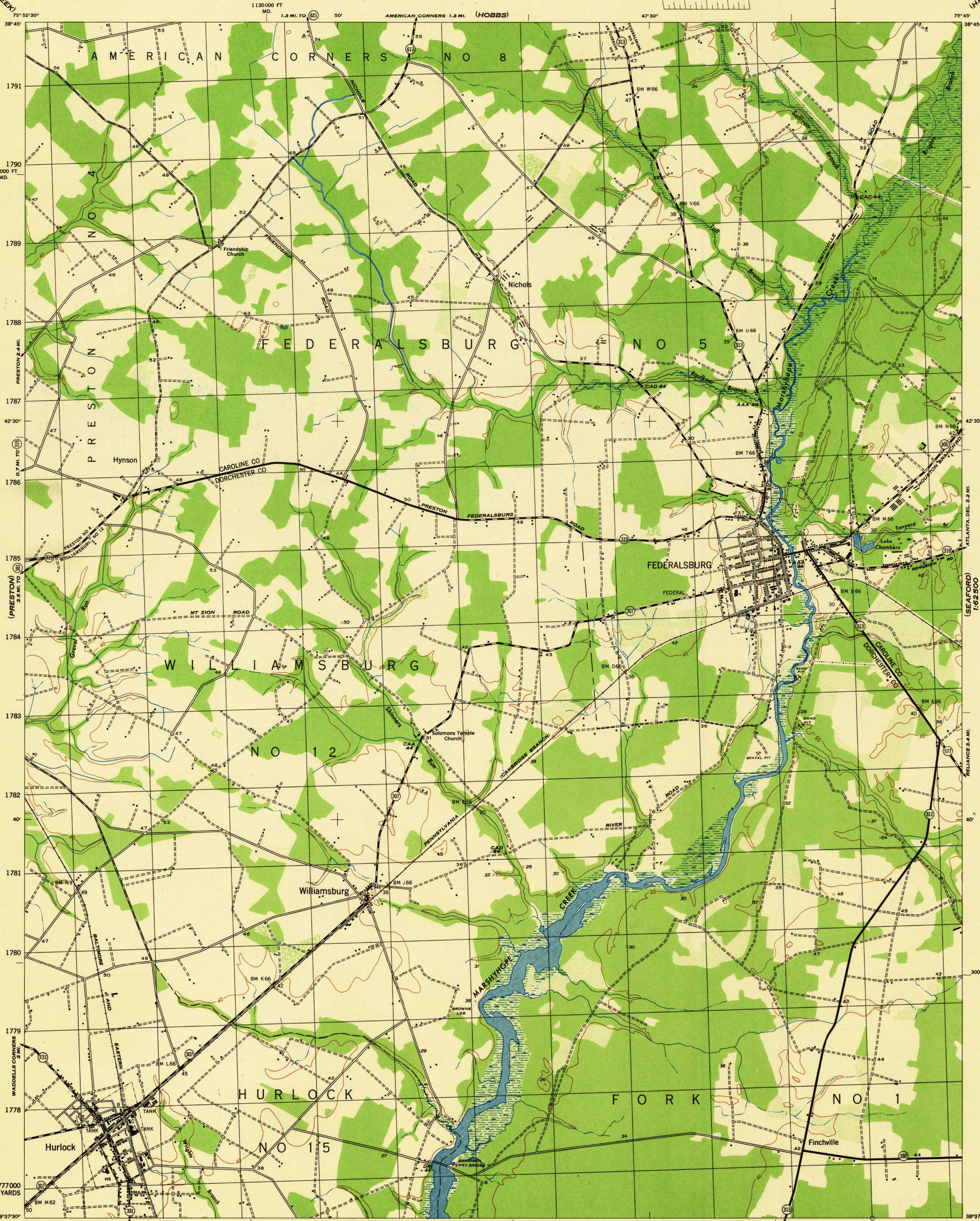
MARYLAND
SCALE 1:31680

WAR DEPARTMENT
CORPS OF ENGINEERS, U. S. ARMY

FEDERALSBURG QUADRANGLE

0° 7½-MINUTE SERIES

(HARRINGTON)
1:62,500



Mapped by the U. S. Coast and Geodetic Survey under the direction of the Chief of Engineers, U. S. Army, 1943.
Control by the U. S. Coast and Geodetic Survey.
Planimetry by the U. S. C. & G. S. from 1942 air photographs.
Planetable topography and field edit by U. S. C. & G. S., 1944.
Polyconic projection, North American datum of 1927.
Recoverable horizontal control stations of less than third order accuracy are shown by circles.

LETTERED CONTROL STATIONS
A-10 BM 10 USGS Elev. 11
B-10 BM 10 USGS Elev. 11
C-10 BM 10 USGS Elev. 11

ROAD CLASSIFICATION 1944
Dependable hard-surface, heavy-duty road. ———— U. S. route 78
Secondary, hard-surface, all-weather road. ———— State route 26
Loose-surface graded, dry-weather road. ————
Dirt road. ————
More than two lanes indicated by note along road with tick at point of change. 3 LANE 1/4 LANE
THIS MAP COMPLIES WITH THE NATIONAL STANDARD MAP ACCURACY REQUIREMENTS

CONTOUR INTERVAL 20 FEET
DATUM IS MEAN SEA LEVEL

ONE THOUSAND YARD GRID COMPUTED FROM "GRID SYSTEM FOR PROGRESSIVE MAPS IN THE U. S. ZONE A, U. S. C. & G. S. SPECIAL PUBLICATION NO. 99"
THE LAST THREE DIGITS OF THE GRID NUMBERS ARE OMITTED
THE STATE GRIDS ARE INDICATED AT 10,000 FOOT INTERVALS
NOTE: OFFICERS USING THIS MAP WILL MAKE NECESSARY CORRECTIONS AND ADDITIONS WHICH COME TO THEIR ATTENTION AND MAIL DIRECT TO "THE CHIEF OF ENGINEERS, WASHINGTON, D. C."

REPRODUCED BY THE U. S. COAST AND GEODETIC SURVEY, AMS. NO. 121058

WOODLAND CLASSIFICATION
Dense woodland
Scattered brush and trees
Marsh or swamp
Dense brush
Orchard
Low ground, intermittently flooded

FEDERALSBURG, MD.
N3837.5-W7545/7.5
EDITION OF 1944

USGS
Historical File
Topographic Division