

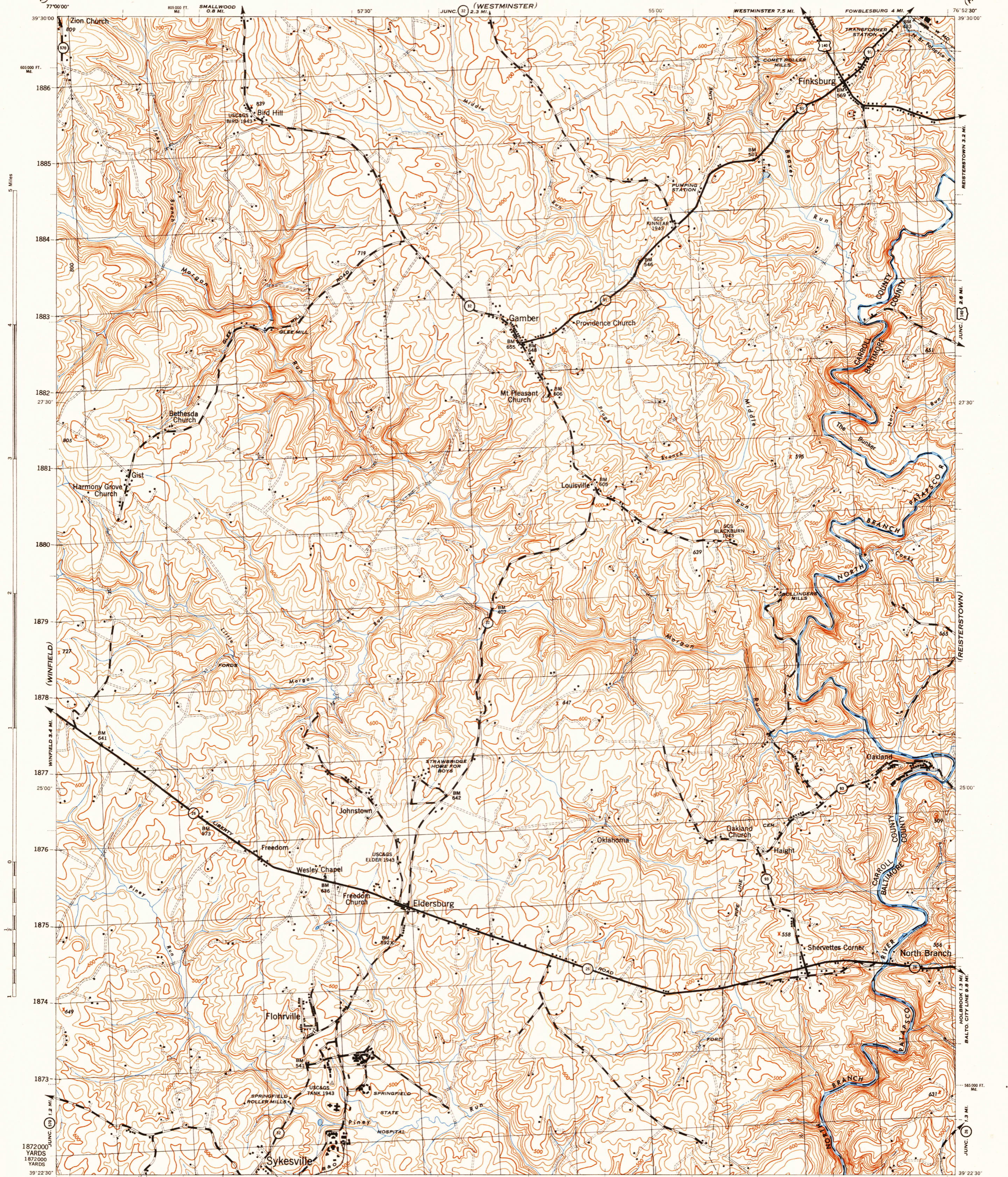
(NEW WINDSOR)

MARYLAND 1:31,680

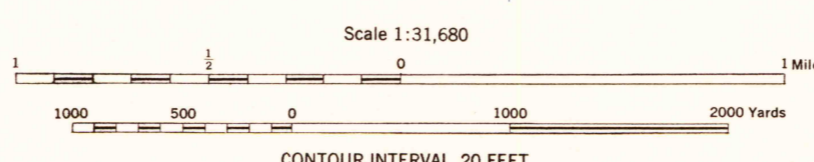
WAR DEPARTMENT
CORPS OF ENGINEERS, U. S. ARMY

FINKSBURG QUADRANGLE
7.5 MINUTE SERIES

(HAMPSTEAD)



Prepared by U. S. Department of Agriculture, Soil Conservation Service, under the direction of the Chief of Engineers, U. S. Army, 1944.
 Horizontal and vertical control by U. S. C. & G. S., U. S. G. S., U. S. E. D., and S. C. S., 1943.
 Topography by S. C. S. 1943. Aerial photography for S. C. S., 1943.
 Polyconic projection, North American datum, 1927.
 This map complies with the National standard map accuracy requirements.



ROAD CLASSIFICATION 1943

Dependable hard-surface, heavy-duty road	Local-surface graded, dry-weather road	U. S. Route
Secondary, hard-surface, all-weather road	Dirt road	State Route
More than two lanes indicated by note along road with tick at point of change	3 LANE 4 LANE	

**CONTOUR INTERVAL 20 FEET
 DATUM IS MEAN SEA LEVEL**

ONE THOUSAND YARD GRID COMPUTED FROM GRID SYSTEM FOR PROGRESSIVE MAPS IN THE U. S. ZONE A U. S. C. & G. S. SPECIAL PUBLICATION NO. 59. THE LAST THREE DIGITS OF THE GRID NUMBERS ARE OMITTED. THE OVERLAPPING GRID, ZONE B, IS INDICATED BY SHORT BROKEN TICKS CROSSING THE NEAT LINE. THE STATE GRID IS INDICATED BY DOTTED TICKS OUTSIDE THE NEAT LINE AT 500 FOOT INTERVALS. NOTE: OFFICERS USING THIS MAP WILL WANT THESE CORRECTIONS AND ADJUSTMENTS WHICH COME TO THEIR ATTENTION AND WILL DIRECT TO: THE CHIEF OF ENGINEERS, WASHINGTON, D. C.

FINKSBURG, MD.
 N3922.5-W7652.5/7.5

(WOODBINE)

(ELLCOTT CITY)