

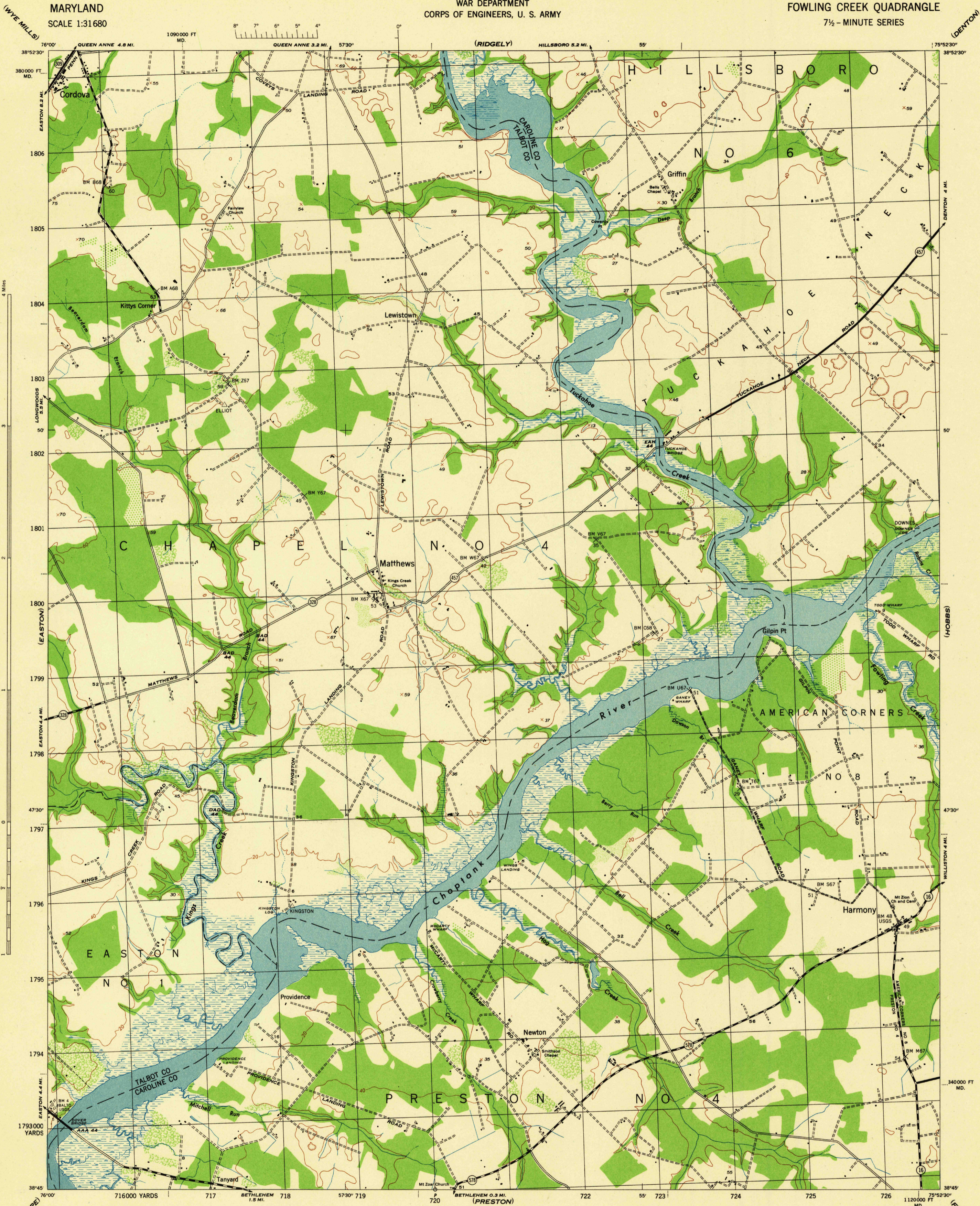
MARYLAND

SCALE 1:31680

WAR DEPARTMENT
CORPS OF ENGINEERS, U. S. ARMY

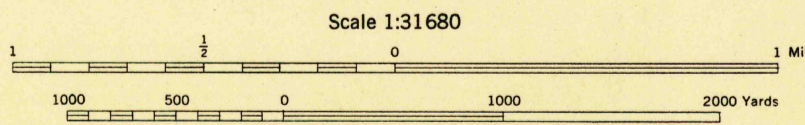
FOWLING CREEK QUADRANGLE

7 1/2 - MINUTE SERIES



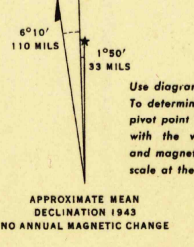
Mapped by the U. S. Coast and Geodetic Survey under the direction of the Chief of Engineers, U. S. Army, 1943.
Control by U. S. G. S. and U. S. C. & G. S.
Planimetry by U. S. C. & G. S. from 1937, 1940 and 1943 air photographs.
Planetary topography and field edit by U. S. C. & G. S., 1944.
Polyconic projection, North American datum of 1927.
Recoverable horizontal control stations of less than third order accuracy are shown by circles.

ROAD CLASSIFICATION 1944
Dependable hard-surface, heavy-duty road. U. S. route 74
Loose-surface graded, dry-weather road. U. S. route 26
Secondary, hard-surface, all-weather road.
Dirt road.
More than two lanes indicated by note along road with tick at point of change
2 LANE 4 LANE
THIS MAP COMPLIES WITH THE NATIONAL STANDARD MAP ACCURACY REQUIREMENTS



CONTOUR INTERVAL 20 FEET
DATUM IS MEAN SEA LEVEL

ONE THOUSAND YARD GRID COMPUTED FROM "GRID SYSTEM FOR PROGRESSIVE MAPS IN THE U. S. ZONE A" U. S. C. & G. S. SPECIAL PUBLICATION NO. 59
THE LAST THREE DIGITS OF THE GRID NUMBERS ARE OBTAINED
THE STATE GRIDS ARE INDICATED AT 10,000 FOOT INTERVALS
NOTE: OFFICERS USING THIS MAP WILL MARK HEREON CORRECTIONS AND ADDITIONS WHICH COME TO THEIR ATTENTION AND MAIL DIRECT TO THE CHIEF OF ENGINEERS, WASHINGTON, D. C.



WOODLAND CLASSIFICATION
Dense woodland
Dense brush
Scattered brush and trees
Orchard
Marsh or swamp
Low ground, intermittently flooded

FOWLING CREEK, MD.
N3845-W7552.5 7.5
EDITION OF 1944

USGS
Historical File
Topographic Division