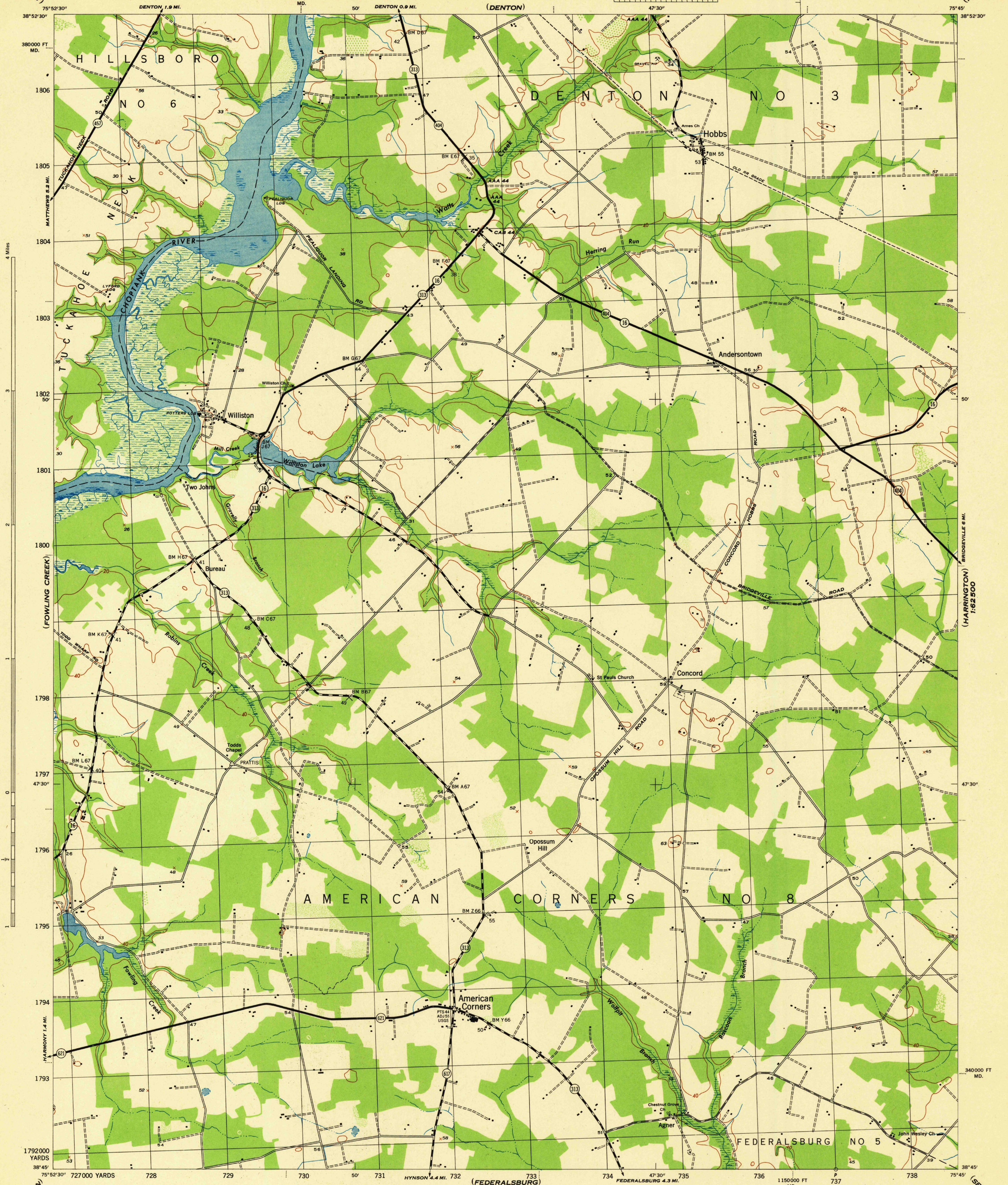


(HARRINGTON)
1:62,500

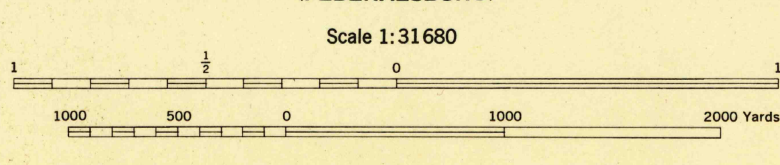


Mapped by the U. S. Coast and Geodetic Survey under the direction of the Chief of Engineers, U. S. Army, 1942
Control by the U. S. G. S. and U. S. C. & G. S.
Planimetry by the U. S. C. & G. S. from 1942 air photographs.
Planetable topography and field edit by U. S. C. & G. S., 1944.
Polyconic projection, North American datum of 1927.
Recoverable horizontal control stations of less than third order accuracy are shown by circles.

ROAD CLASSIFICATION 1944

Dependable hard-surface, heavy-duty road. Loose-surface graded, dry-weather road. U. S. route 74.
Secondary hard-surface, all-weather road. Dirt road. State route 26.
More than two lanes indicated by note along road with tick at point of change. 3 LANE 4 LANE

THIS MAP COMPLIES WITH THE NATIONAL STANDARD MAP ACCURACY REQUIREMENTS



CONTOUR INTERVAL 20 FEET
DATUM IS MEAN SEA LEVEL

ONE THOUSAND YARD GRID COMPUTED FROM GRID SYSTEM FOR PROGRESSIVE MAPS IN THE U. S. ZONE A. U. S. C. & G. S. SPECIAL PUBLICATION NO. 59. THE LAST THREE DIGITS OF THE GRID NUMBERS ARE OMITTED.
THE STATE GRID IS INDICATED AT 10,000 FOOT INTERVALS.
NOTE: OFFICERS USING THIS MAP WILL MARK HEREON CONNECTIONS AND ADDITIONS WHICH COME TO THEIR ATTENTION AND MAIL DIRECT TO THE CHIEF OF ENGINEERS, WASHINGTON, D. C.

REPRODUCED BY THE U. S. COAST AND GEODETIC SURVEY, AMS. NO. 121049

WOODLAND CLASSIFICATION

Dense woodland	Dense brush
Scattered brush and trees	Orchard
Marsh or swamp	Low ground, intermittently flooded

APPROXIMATE MEAN DECLINATION 1943
NO ANNUAL MAGNETIC CHANGE

6°14' 11" W
1°46' 31" W

111 MILES
31 WILS

HISTORICAL FILES
(DO NOT REMOVE)

HOBBS, MD.
N3845-W7545/7.5
EDITION OF 1944