

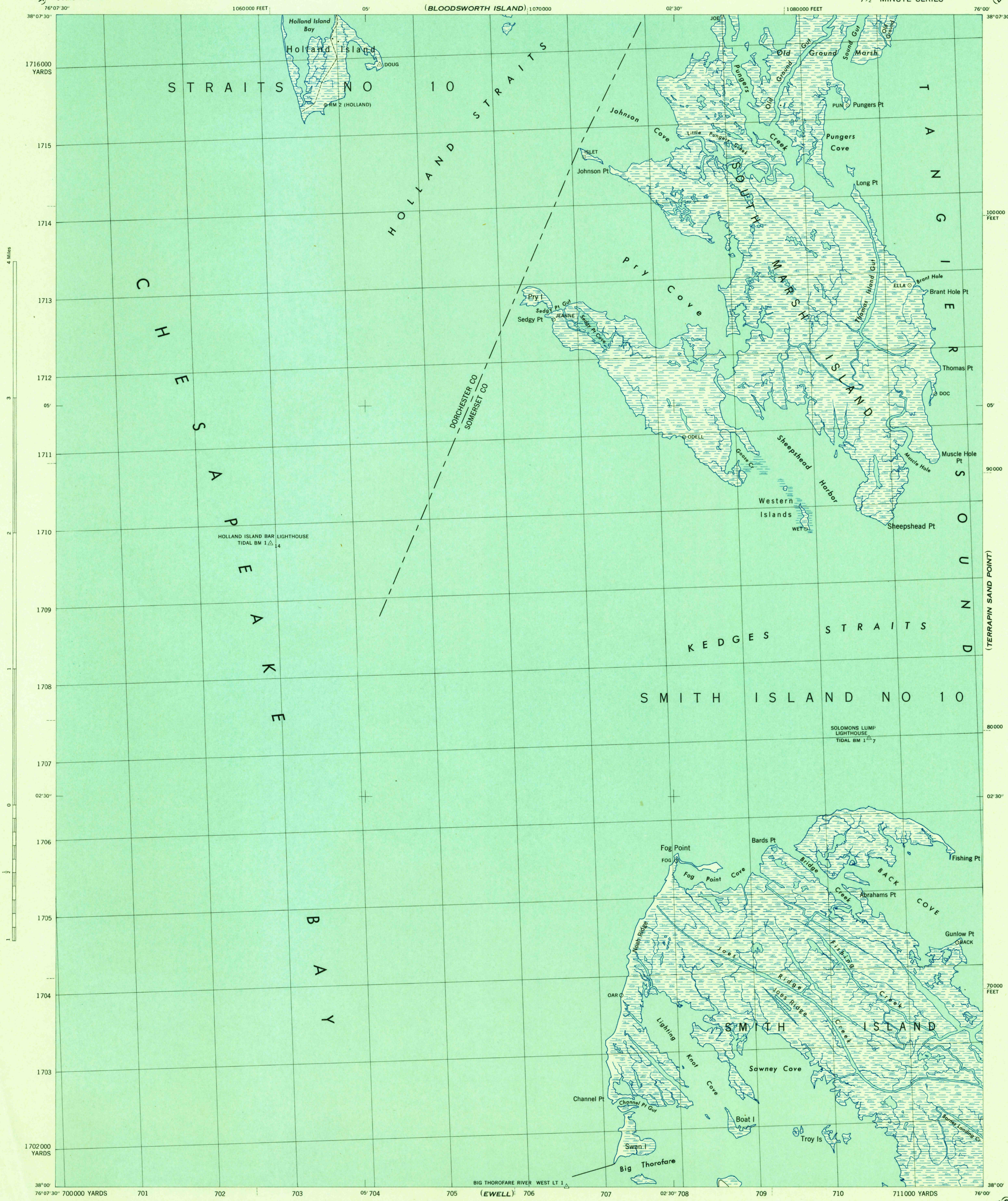
(RICHLAND POINT)

MARYLAND
Scale 1:31680

WAR DEPARTMENT
CORPS OF ENGINEERS, U. S. ARMY

KEDGES STRAITS QUADRANGLE
7½-MINUTE SERIES

(DEAL ISLAND)

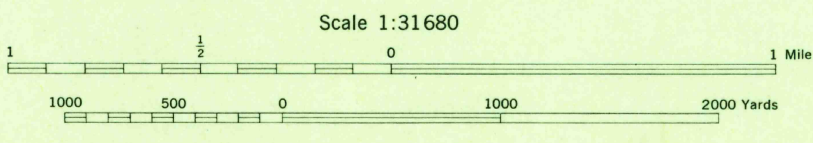


War Department mapping project.
Under direction of the Chief of Engineers.
Control by the U. S. Coast and Geodetic Survey.
Planimetry compiled from air photographs by U. S. Coast and Geodetic Survey.
Planetable topography and field edit by U. S. Coast and Geodetic Survey, 1942.

ROAD CLASSIFICATION

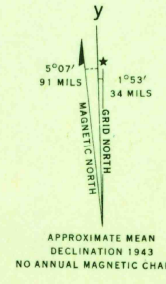
Dependable hard-surface, heavy-duty road.	Loose-surface graded, city-weather road.	U. S. route (76)
Secondary, hard-surface, all-weather road.	Dirt road.	State route (33)

More than two lanes indicated by note along road with tick at point of change. **3-LANE 1-LANE**
Road data 1942



MAXIMUM GROUND ELEVATION 4 FEET
DATUM IS MEAN SEA LEVEL

ONE THOUSAND YARD GRID COMPUTED FROM GRID SYSTEM FOR PROGRESSIVE MAPS
IN THE U. S. ZONE A U. S. C. & G. S. SPECIAL PUBLICATION NO. 59
THE LAST THREE DIGITS OF THE GRID NUMBERS ARE OMITTED
NOTE: OFFICERS USING THIS MAP WILL MARK REVISION CORRECTIONS AND ADDITIONS WHICH COME
TO THEIR ATTENTION AND MAIL DIRECT TO "THE CHIEF OF ENGINEERS, WASHINGTON, D. C."



REPRODUCED BY THE U. S. COAST AND GEODETIC SURVEY 120757
1943

Polyconic projection. North American datum of 1927.
Maryland coordinate system, single zone, is indicated
by ticks outside the next line at 10,000 foot intervals.
Recoverable horizontal control stations of less than
third order accuracy are shown by a circle.
This map complies with the national standard map
accuracy requirements.

USCS
Historical File
Topographic Division

KEDGES STRAITS, MD.
N3800-W7600/7.5

(GREAT POINT ISLAND)
U. S. G. S.
FILE COPY
Inspector and Editor