

# MARYLAND

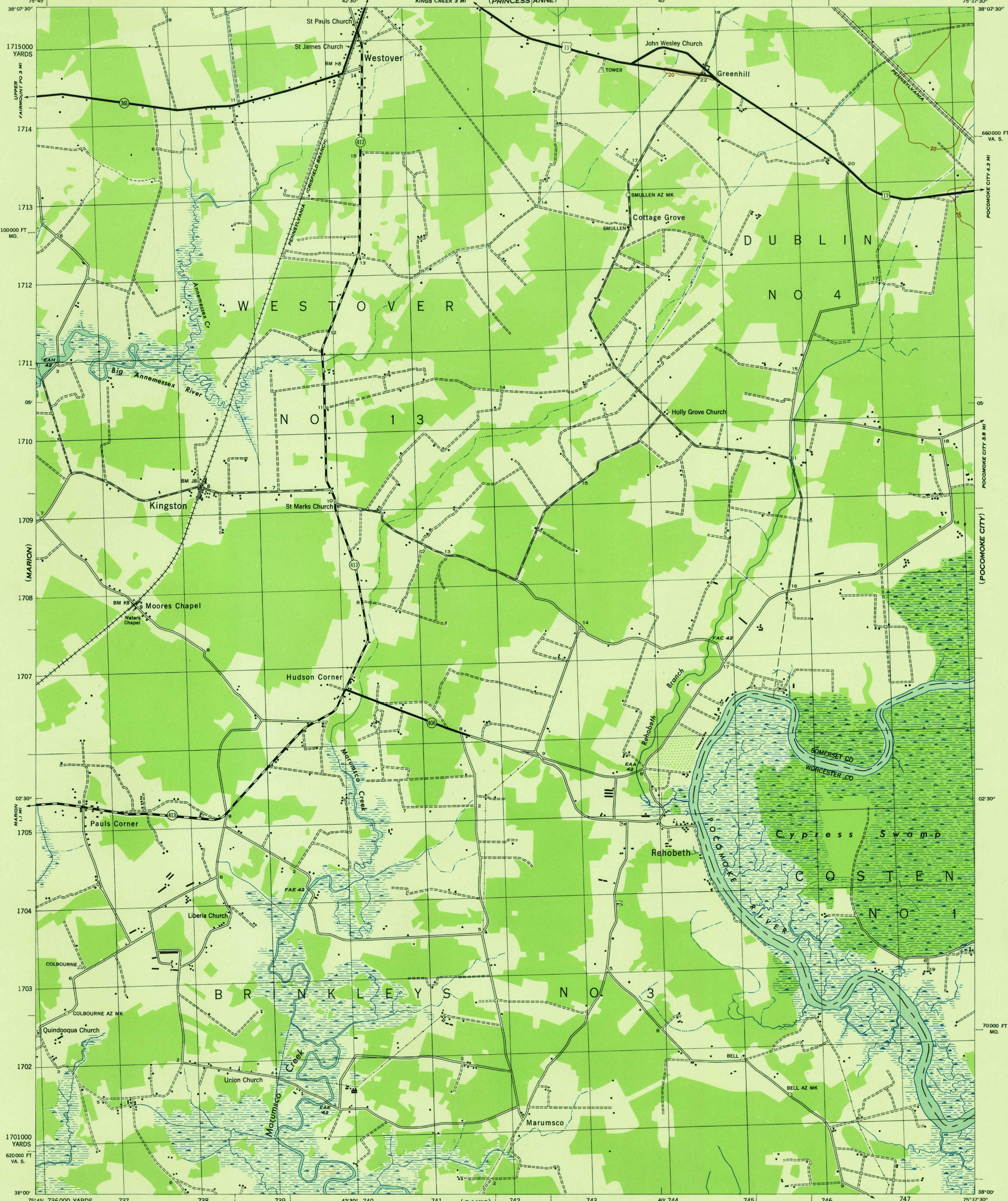
SCALE 1:31680

1:160,000 FT  
MD.

WAR DEPARTMENT  
CORPS OF ENGINEERS, U. S. ARMY

KINGSTON QUADRANGLE

7½-MINUTE SERIES



War Department mapping project.  
Under direction of the Chief of Engineers.  
Control by the U. S. Coast and Geodetic Survey.  
Planimetry compiled from air photographs by U. S. Coast and Geodetic Survey.  
Planimetric topography and field edit by U. S. Coast and Geodetic Survey, 1942.  
Polyconic projection, North American datum of 1927.  
This map complies with the national standard map accuracy requirements.

ROAD CLASSIFICATION 1942  
Dependable hard-surface, heavy-duty road. U. S. route 74  
Loose-surface graded, dry-weather road. U. S. route 25  
Secondary, hard-surface, all-weather road. State route 25  
Dirt road.  
More than two lanes indicated by note along road with tick at point of change. 3 LANE 4 LANE

Scale 1:31680  
1 000 500 0 1000 2000 Yards  
1 Mile  
CONTOUR INTERVAL 20 FEET  
DATUM IS MEAN SEA LEVEL  
ONE THOUSAND YARD GRID COMPUTED FROM "GRID SYSTEM FOR PROGRESSIVE MAPS IN THE U. S. ZONE A. U. S. C. & G. S. SPECIAL PUBLICATION NO. 59"  
THE LAST THREE DIGITS OF THE GRID NUMBERS ARE OMITTED.  
THE STATE GRID IS INDICATED AT 10,000 FOOT INTERVALS.  
NOTE: OFFICERS USING THIS MAP WILL MARK HEREON CORRECTIONS AND ADDITIONS WHICH COME TO THEIR ATTENTION AND MAIL DIRECT TO THE CHIEF OF ENGINEERS, WASHINGTON, D. C.

REPRODUCED BY THE U. S. COAST AND GEODETIC SURVEY, (W & H) 1943  
ANS NO. 120758  
APPROXIMATE MEAN DECLINATION 1943  
NO ANNUAL MAGNETIC CHANGE  
Recoverable horizontal control stations of less than third order accuracy are shown by a circle.

USGS  
Historical File  
Topographic Division

KINGSTON, MD.  
N3800-W7537.5/7.5