

(MT VERNON)

MARYLAND SCALE 1:31680  
CHARLES COUNTY

WAR DEPARTMENT  
CORPS OF ENGINEERS, U. S. ARMY

LA PLATA QUADRANGLE  
7½-MINUTE SERIES

RESTRICTED

(BRANDYWINE)

(PISCATAWAY)



(MATHIAS POINT)

619000 POTOMAC RIVER BRIDGE  
YARDS 11.7 MI.  
Mapped by the U. S. Coast and Geodetic Survey under the direction of the Chief of Engineers, U. S. Army, 1942.  
Control by the U. S. Coast and Geodetic Survey.  
Planimetry by the U. S. C. & G. S. from 1943 air photographs.  
Planimetric topography and field edit by U. S. C. & G. S., 1944.  
Polyconic projection, North American datum of 1927.  
Recoverable horizontal control stations of less than third order accuracy are shown by circles.

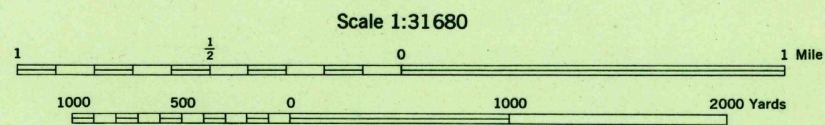
ROAD CLASSIFICATION 1944

Dependable hard-surface, heavy-duty road. Loose-surface graded, dry-weather road. U. S. route 771

Secondary, hard-surface, all-weather road. Dirt road. State route 26

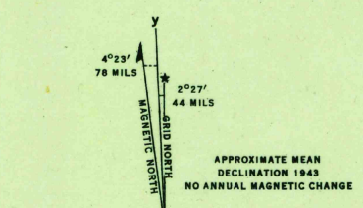
More than two lanes indicated by note along road with tick at point of change

THIS MAP COMPLIES WITH THE NATIONAL STANDARD MAP ACCURACY REQUIREMENTS



CONTOUR INTERVAL 20 FEET  
DATUM IS MEAN SEA LEVEL

ONE THOUSAND YARD GRID COMPUTED FROM "GRID SYSTEM FOR PROGRESSIVE MAPS IN THE U. S. C. & G. S. SPECIAL PUBLICATION NO. 89". THE "B" GRID IS INDICATED BY DASHED TICKS. THE LAST THREE DIGITS OF THE GRID NUMBERS ARE OMITTED. THE STATE GRIDS ARE INDICATED AT 10,000 FOOT INTERVALS. NOTE: OFFICERS USING THIS MAP WILL MAKE NECESSARY CORRECTIONS AND ADDITIONS WHICH COME TO THEIR ATTENTION AND MAIL DIRECT TO "THE CHIEF OF ENGINEERS, WASHINGTON, D. C."



WOODLAND CLASSIFICATION

Dense woodland Dense brush

Scattered brush and trees Orchard

Marsh or swamp Low ground, intermittently flooded

APPROXIMATE MEAN DECLINATION 1948  
NO ANNUAL MAGNETIC CHANGE

Use diagram only to obtain numerical values. To determine magnetic north line, connect the pivot point "P" on the south edge of the map with the value of the angle between GRID NORTH and MAGNETIC NORTH, as plotted on the degree scale at the north edge of the map.

USCS LA PLATA, MD.  
Historical File N3830-W7652.5/7.5  
Topographic Division EDITION OF 1944

U. S. C. S.  
FILE COPY  
Inspection and Editing

(CHARLOTTE HALL)