

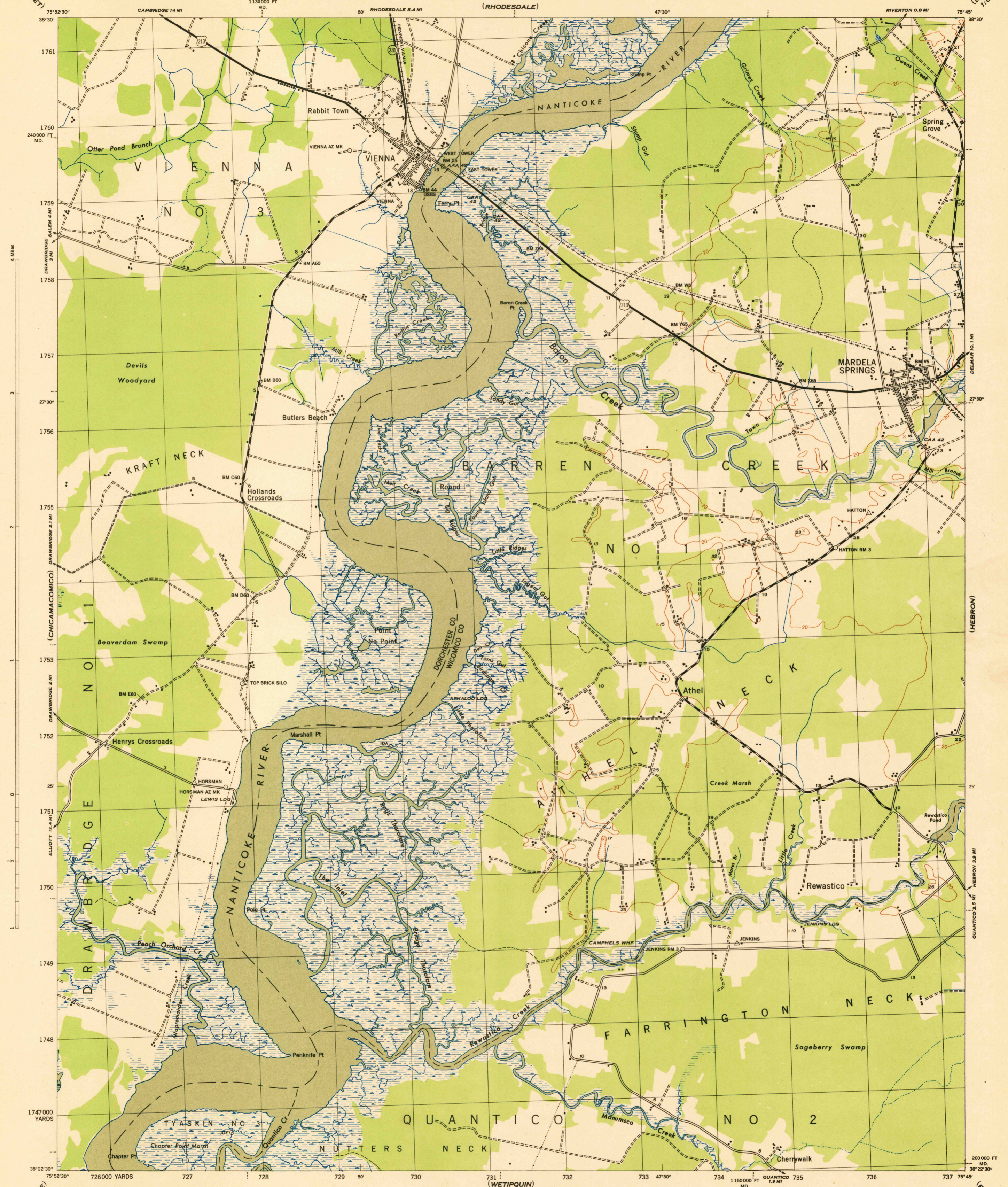
(EAST NEW MARKET)

MARYLAND
SCALE 1:31680

WAR DEPARTMENT
CORPS OF ENGINEERS, U. S. ARMY

MARDELA SPRINGS QUADRANGLE
7½-MINUTE SERIES

(SEAFORD)
1:62,800



War Department mapping project.
Under direction of the Chief of Engineers.
Control by the U. S. Coast and Geodetic Survey.
Planimetry compiled from air photographs by U. S. Coast and Geodetic Survey.
Planetable topography and field edit by U. S. Coast and Geodetic Survey, 1942.
Polyconic projection, North American datum of 1927.
This map complies with the national standard map accuracy requirements.

Scale 1:31680

CONTOUR INTERVAL 20 FEET
DATUM IS MEAN SEA LEVEL

ONE THOUSAND YARD GRID COMPUTED FROM "GRID SYSTEM FOR PROGRESSIVE MAPS IN THE U. S. ZONE A, U. S. C. & G. S. SPECIAL PUBLICATION NO. 99"
THE LAST THREE DIGITS OF THE GRID NUMBERS ARE OMITTED.
THE STATE GRIDS ARE INDICATED AT 10000 FOOT INTERVALS.

NOTE: OFFICERS USING THIS MAP WILL MARK HEREON CORRECTIONS AND ADDITIONS WHICH COME TO THEIR ATTENTION AND MAIL DIRECT TO "THE CHIEF OF ENGINEERS, WASHINGTON, D. C."

REPRODUCED BY THE U. S. COAST AND GEODETIC SURVEY (W & H) 1943
ANS NO. 120761

Recoverable horizontal control stations of less than third order accuracy are shown by circles.

APPROXIMATE MEAN DECLINATION 1943
NO ANNUAL MAGNETIC CHANGE

MARDELA SPRINGS, MD.
N3822.5-W7545.7.5

ROAD CLASSIFICATION 1942

Dependable hard-surface, heavy-duty road.	Loose-surface graded, dry-weather road.	U. S. route
Secondary, hard-surface, all-weather road.	Dirt road.	State route

More than two lanes indicated by note along road with tick at point of change. 3 LANE 4 LANE

II HISTORICAL FILES
(DO NOT REMOVE)