

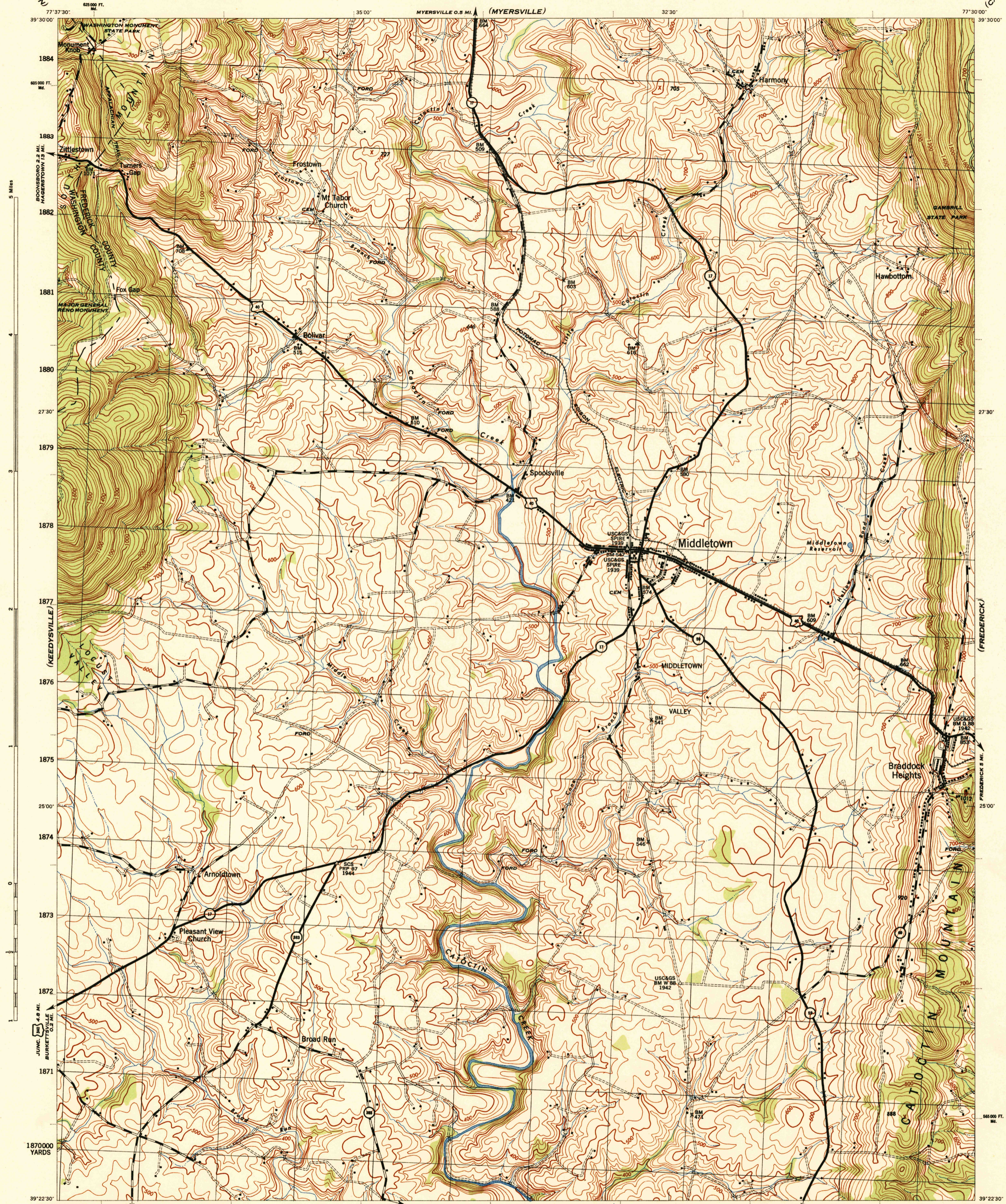
(FUNKSTOWN)

MARYLAND 1:31,680

WAR DEPARTMENT  
CORPS OF ENGINEERS, U. S. ARMY

MIDDLETOWN QUADRANGLE  
7.5 MINUTE SERIES

(CATOCTIN FURNACE)



187000 YARDS  
39°22'30"  
77°37'30" 1318000 YARDS  
JUNC 1319 2.2 MI.  
1320 1321 1322 JEFFERSON 2.9 MI. 1323 (POINT OF ROCKS) 1324 1325 1326 1327 JUNC 1328 0.8 MI.  
56500 FT. ME. 77°30'00"

Prepared by U. S. Department of Agriculture, Soil Conservation Service, under the direction of the Chief of Engineers, U. S. Army, 1944. Horizontal and vertical control by U. S. C. & G. S., U. S. G. S., U. S. E. D., and S. C. S., 1943-44. Topography by S. C. S., 1943. Aerial photography for S. C. S., 1943. Polyconic projection, North American datum, 1927. This map complies with the National standard map accuracy requirements.

**ROAD CLASSIFICATION 1943**  
 Dependable hard-surface, heavy-duty road ——— U. S. Route 40  
 Secondary, hard-surface, all-weather road ——— State Route 17  
 Loos-surface graded, dry-weather road ———  
 Dirt road ———  
 More than two lanes indicated by note along road with tick at point of change ——— 3 LANE 4 LANE

Scale 1:31,680  
 1000 500 0 1000 2000 Yards  
 1 Mile

CONTOUR INTERVAL 20 FEET  
 DATUM IS MEAN SEA LEVEL

ONE THOUSAND YARD GRID COMPUTED FROM "GRID SYSTEM FOR PROGRESSIVE MAPS IN THE U. S. ZONE B" U. S. C. & G. S. SPECIAL PUBLICATION NO. 99. THE LAST THREE DIGITS OF THE GRID NUMBERS ARE OMITTED. THE STATE GRID IS INDICATED BY DOTTED TICKS OUTSIDE THE NEAT LINE AT 800 FOOT INTERVALS. NOTE: OFFICERS USING THIS MAP WILL MAKE PERSON CORRECTIONS AND ADDITIONS WHICH COME TO THEIR ATTENTION AND MAIL DIRECT TO "THE CHIEF OF ENGINEERS, WASHINGTON, D. C."

7°45' 138 MILES  
 2°11' 18 MILES  
 APPROXIMATE NEAR DECLINATION 1944  
 ANNUAL MAGNETIC CHANGE 30' DECREASE

USGS  
 FILE COPY  
 Inspection and Editing  
 MIDDLETOWN, MD.  
 N3922.5-W7730/7.5

USGS  
 Historical File  
 Topographic Division

(HAPPERS FERRY)

(BUCKEYSTOWN)