

(HAYRE DE GRACE)
1:62,500

PERRYMAN QUADRANGLE
7½-MINUTE SERIES

WAR DEPARTMENT
CORPS OF ENGINEERS, U. S. ARMY
(HAYRE DE GRACE)
1:62,500

MARYLAND
SCALE 1:31,680

(BELAIR)
1:62,500



(GUNPOWDER)
1:62,500

Maped by the U. S. Coast and Geodetic Survey under the direction of the Chief of Engineers, U. S. Army, 1943.
Control by the U. S. Coast and Geodetic Survey.
Planimetry by U. S. C. & G. S. from 1943 air photographs.
Planimetric topography and field edit by U. S. C. & G. S., 1943.
Polyconic projection, North American datum of 1927.
Recoverable horizontal control stations of less than third order accuracy are shown by circles.

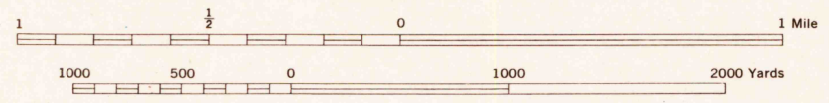
ROAD CLASSIFICATION 1943

Dependable hard-surface, heavy-duty road. Loose-surface graded, dry-weather road. U. S. route 74

Secondary, hard-surface, all-weather road. Dirt road. State route 76

More than two lanes indicated by note along road with tick at point of change. 3 LANE 1 LANE

THIS MAP COMPLIES WITH THE NATIONAL STANDARD MAP ACCURACY REQUIREMENTS

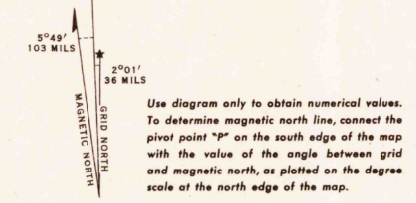


ONE THOUSAND YARD GRID COMPUTED FROM "GRID SYSTEM FOR PROGRESSIVE MAPS IN THE U. S. - ZONE A" U. S. C. & G. S. SPECIAL PUBLICATION NO. 55

THE LAST THREE DIGITS OF THE GRID NUMBERS ARE OMITTED

THE STATE GRIDS ARE INDICATED AT 10,000 FOOT INTERVALS

NOTE: OFFICERS USING THIS MAP WILL MAKE NECESSARY CORRECTIONS AND ADJUSTMENTS WHICH COME TO THEIR ATTENTION AND MAIL DIRECT TO "THE CHIEF OF ENGINEERS, WASHINGTON, D. C."



WOODLAND CLASSIFICATION

Dense woodland Dense brush

Scattered brush and trees Orchard

Marsh or swamp Low ground, intermittently flooded

Contours shown by broken lines are approximate only

PERRYMAN, MD.
N3922.5 - W7607.5/7.5
EDITION OF 1944

(BETTERTON)
1:62,500

REPRODUCED BY THE U. S. COAST AND GEODETIC SURVEY, ANS NO. 121012