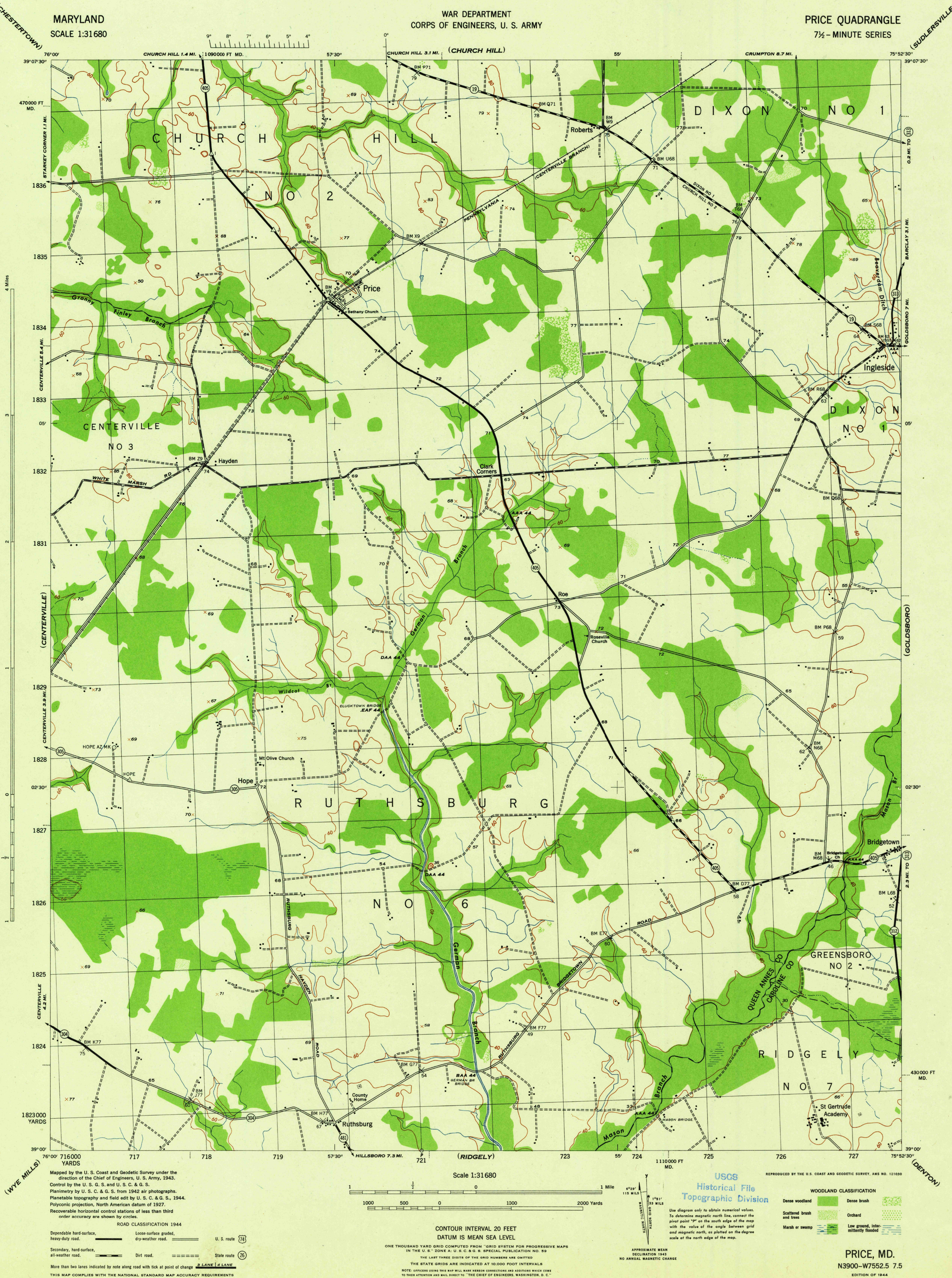


MARYLAND  
SCALE 1:31680

WAR DEPARTMENT  
CORPS OF ENGINEERS, U. S. ARMY

PRICE QUADRANGLE  
7½-MINUTE SERIES



Maped by the U. S. Coast and Geodetic Survey under the direction of the Chief of Engineers, U. S. Army, 1943. Control by the U. S. G. S. and U. S. C. & G. S. Planimetry by U. S. C. & G. S. from 1942 air photographs. Planetable topography and field edit by U. S. C. & G. S., 1944. Polyconic projection, North American datum of 1927. Recoverable horizontal control stations of less than third order accuracy are shown by circles.

ROAD CLASSIFICATION 1944

Dependable hard-surface, heavy-duty road. Loose-surface graded, dry-weather road. U. S. route (74) Secondary, hard-surface, all-weather road. Dirt road. State route (26) More than two lanes indicated by note along road with tick at point of change 3 LANE 1 1/2 LANE

THIS MAP COMPLIES WITH THE NATIONAL STANDARD MAP ACCURACY REQUIREMENTS

Scale 1:31680

CONTOUR INTERVAL 20 FEET  
DATUM IS MEAN SEA LEVEL

ONE THOUSAND YARD GRID COMPUTED FROM "GRID SYSTEM FOR PROGRESSIVE MAPS IN THE U. S." ZONE A U. S. C. & G. S. SPECIAL PUBLICATION NO. 59 THE LAST THREE DIGITS OF THE GRID NUMBERS ARE OMITTED. THE STATE GRIDS ARE INDICATED AT 10,000 FOOT INTERVALS. NOTE: OFFICERS USING THIS MAP WILL MARK HEREON CORRECTIONS AND ADDITIONS WHICH COME TO THEIR ATTENTION AND MAIL DIRECT TO "THE CHIEF OF ENGINEERS, WASHINGTON, D. C."

USGS  
Historical File  
Topographic Division

Use diagram only to obtain numerical values. To determine magnetic north line, connect the pivot point "P" on the south edge of the map with the value of the angle between grid and magnetic north, as plotted on the degree scale at the north edge of the map.

APPROXIMATE MEAN DECLINATION 1943  
NO ANNUAL MAGNETIC CHANGE

REPRODUCED BY THE U. S. COAST AND GEODETIC SURVEY, AMS NO. 121050

WOODLAND CLASSIFICATION

Dense woodland Dense brush  
Scattered brush and trees Orchard  
Marsh or swamp Low ground, intermittently flooded

PRICE, MD.  
N3900-W7552.5 7.5  
EDITION OF 1944