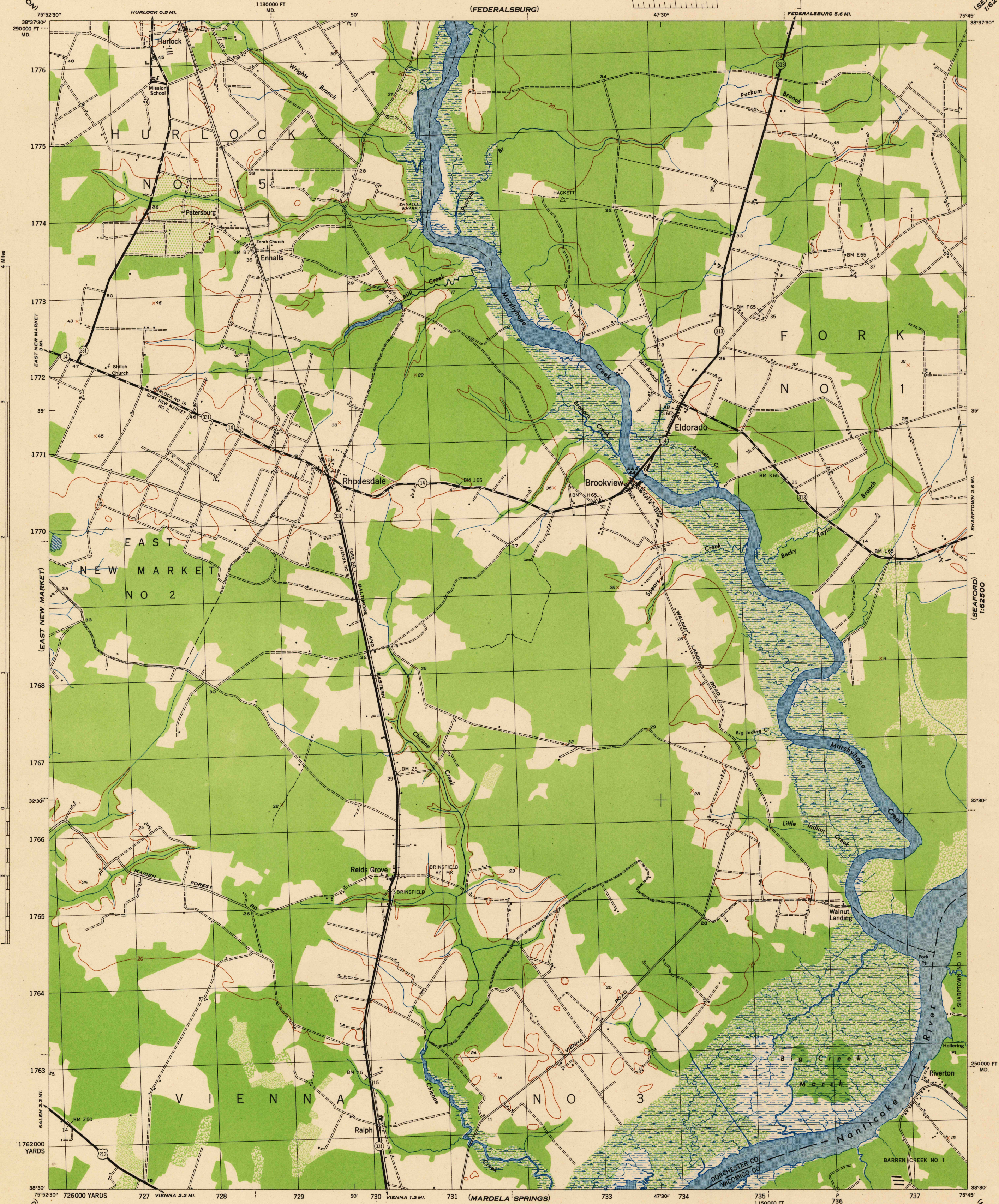


MARYLAND
SCALE 1:31680

WAR DEPARTMENT
CORPS OF ENGINEERS, U. S. ARMY

RHODESDALE QUADRANGLE
7½-MINUTE SERIES

(SEAFORD)
1:62500



Map by the U. S. Coast and Geodetic Survey under the direction of the Chief of Engineers, U. S. Army, 1943.
Control by the U. S. Coast and Geodetic Survey.
Planimetry by the U. S. C. & G. S. from 1942 air photographs.
Planimetric topography and field edit by U. S. C. & G. S., 1944.
Polyconic projection, North American datum of 1927.
Recoverable horizontal control stations of less than third order accuracy are shown by circles.

ROAD CLASSIFICATION 1944
Dependable hard-surface, heavy-duty road. Loose-surface graded, dry-weather road. U. S. route 74
Secondary, hard-surface, all-weather road. Dirt road. State route 26
More than two lanes indicated by note along road with tick at point of change 3 LANE 4 LANE
THIS MAP COMPLIES WITH THE NATIONAL STANDARD MAP ACCURACY REQUIREMENTS

Scale 1:31680

CONTOUR INTERVAL 20 FEET
DATUM IS MEAN SEA LEVEL

ONE THOUSAND YARD GRID COMPUTED FROM "GRID SYSTEM FOR PROGRESSIVE MAPS IN THE U. S." ZONE A U. S. C. & G. S. SPECIAL PUBLICATION NO. 59
THE LAST THREE DIGITS OF THE GRID NUMBERS ARE OBTAINED
THE STATE GRIDS ARE INDICATED AT 10,000 FOOT INTERVALS
NOTE: OFFICERS USING THIS MAP WILL MARK REVISIONS AND ADDITIONS WHICH COME TO THEIR ATTENTION AND MAIL DIRECT TO "THE CHIEF OF ENGINEERS, WASHINGTON, D. C."

Use diagram only to obtain numerical values.
To determine magnetic north line, connect the pivot point "P" on the south edge of the map with the value of the angle between grid and magnetic north, as plotted on the degree scale of the north edge of the map.
APPROXIMATE MEAN DECLINATION 1943
NO ANNUAL MAGNETIC CHANGE

WOODLAND CLASSIFICATION
Dense woodland. Dense brush.
Scattered brush and trees. Orchard.
Marsh or swamp. Low ground, intermittently flooded.

RHODESDALE, MD.
N3830-W7545/7.5
EDITION OF 1944

USGS
Historical File
Topographic Division