

(CHARLOTTE HALL)

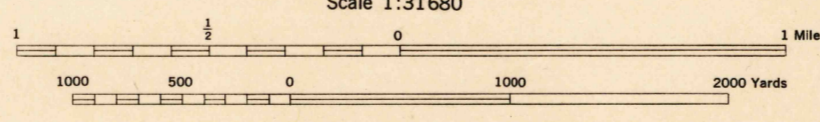


War Department mapping project.
Under direction of the Chief of Engineers.
Control by the U. S. Coast and Geodetic Survey.
Planimetry compiled from air photographs by U. S. Coast and Geodetic Survey.
Planetable topography and field edit by U. S. Coast and Geodetic Survey, 1943.
Polyconic projection, North American datum of 1927.
This map complies with the national standard map accuracy requirements.

ROAD CLASSIFICATION 1943

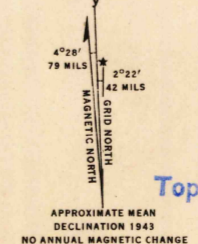
Dependable hard-surface, heavy-duty road.	Loose surface graded, dry-weather road.	U. S. route (74)
Secondary, hard-surface, all-weather road.	Dirt road.	State route (23)

More than two lanes indicated by note along road with tick at point of change. 3 LANE 14 LANE



CONTOUR INTERVAL 20 FEET
DATUM IS MEAN SEA LEVEL

ONE THOUSAND YARD GRID COMPUTED FROM "GRID SYSTEM FOR PROGRESSIVE MAPS IN THE U. S." ZONE A. U. S. C. & G. S. SPECIAL PUBLICATION NO. 59
THE "1" GRID IS INDICATED BY DASHED TICKS
THE LAST THREE DIGITS OF THE GRID NUMBERS ARE OMITTED
THE STATE GRIDS ARE INDICATED AT 10,000 FOOT INTERVALS
NOTE: OFFICERS USING THIS MAP WILL MAKE NECESSARY CORRECTIONS AND ADDITIONS WHICH COME TO THEIR ATTENTION AND MAIL DIRECT TO: THE CHIEF OF ENGINEERS, WASHINGTON, D. C.



USCS
Historical File
Topographic Division

ROCK POINT, MD.
N3815-W7645/7.5

(WAKEFIELD)

(BLAKISTON ISLAND)

(POPES CREEK)

(LEONARDTOWN)