

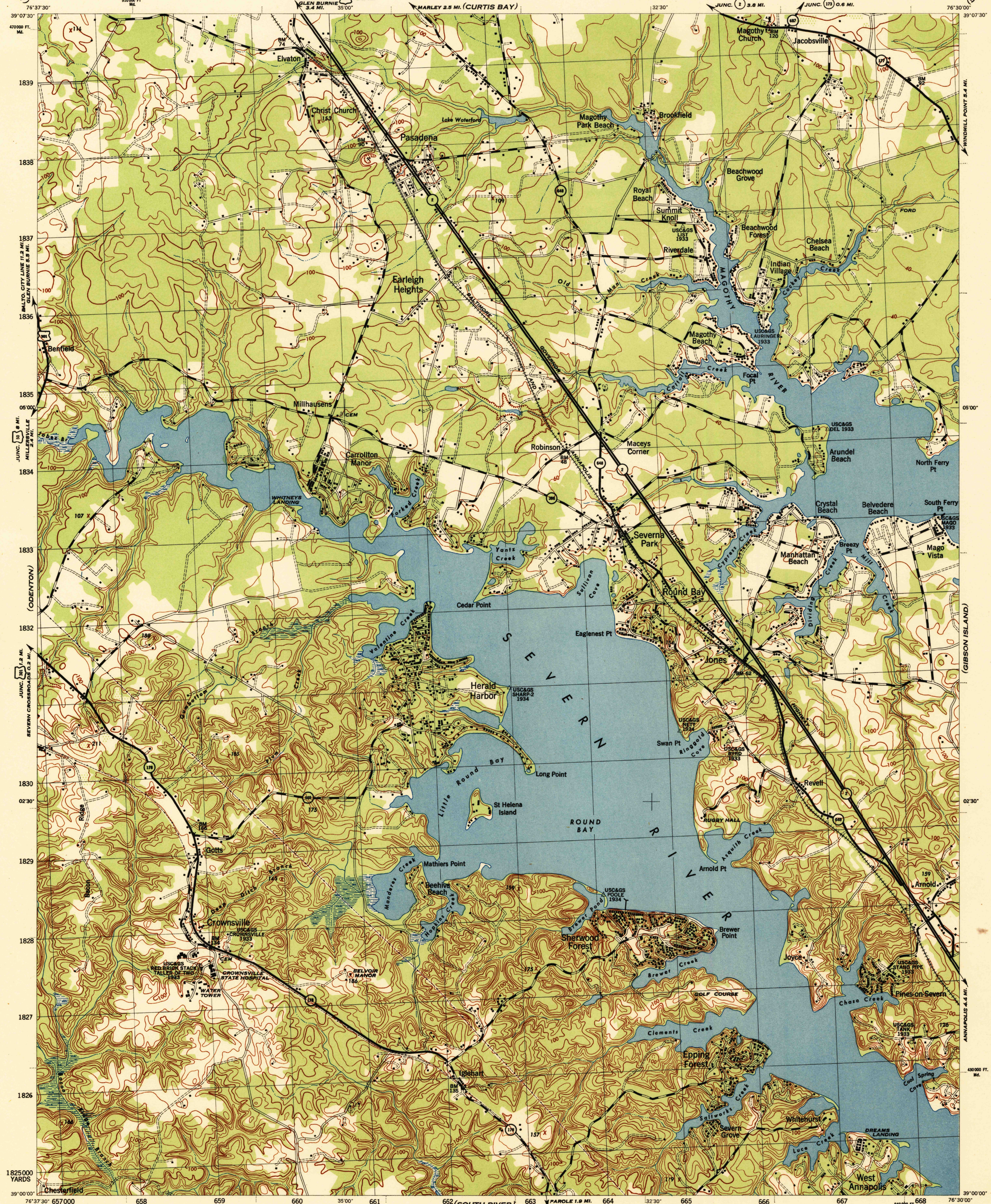
MARYLAND 1:31,680

WAR DEPARTMENT
CORPS OF ENGINEERS, U. S. ARMY

ROUND BAY QUADRANGLE
7.5 MINUTE SERIES

(SPARROWS POINT)
(GIBSON ISLAND)
(ANNAPOLIS)

(DAVIDSONVILLE)



Prepared by U.S. Department of Agriculture, Soil Conservation Service,
under the direction of the Chief of Engineers, U. S. Army, 1944.
Horizontal and vertical control by U. S. C. & G. S., U. S. G. S., U. S. E. D., and S. C. S., 1943.
Topography by S. C. S., 1944. Aerial photography for S. C. S., 1943.
Polyconic projection, North American datum, 1927.
This map complies with the National standard map accuracy requirements.

ROAD CLASSIFICATION 1943
Dependable hard-surface, heavy-duty road
Loose-surface graded, dry-weather road
Secondary, hard-surface, all-weather road
Dirt road
U. S. Route 301
State Route 170
More than two lanes indicated by note along road with tick at point of change

Scale 1:31,680
CONTOUR INTERVAL 20 FEET
DATUM IS MEAN SEA LEVEL
ONE THOUSAND YARD GRID COMPUTED FROM "GRID SYSTEM FOR PROGRESSIVE MAPS
IN THE U. S. ZONE A, U. S. C. & G. S. SPECIAL PUBLICATION NO. 59
THE LAST THREE DIGITS OF THE GRID NUMBERS ARE OMITTED
THE STATE GRID IS INDICATED BY DOTTED TICKS OUTSIDE THE NEAT LINE AT 5000 FOOT INTERVALS
NOTE: OFFICERS USING THIS MAP WILL MAKE PERSON CORRECTIONS AND ADDITIONS WHICH COME
TO THEIR ATTENTION AND MAIL DIRECT TO "THE CHIEF OF ENGINEERS, WASHINGTON, D. C."

HISTORICAL FILES
(DO NOT REMOVE)

ROUND BAY, MD.
N3900-W7630/7.5