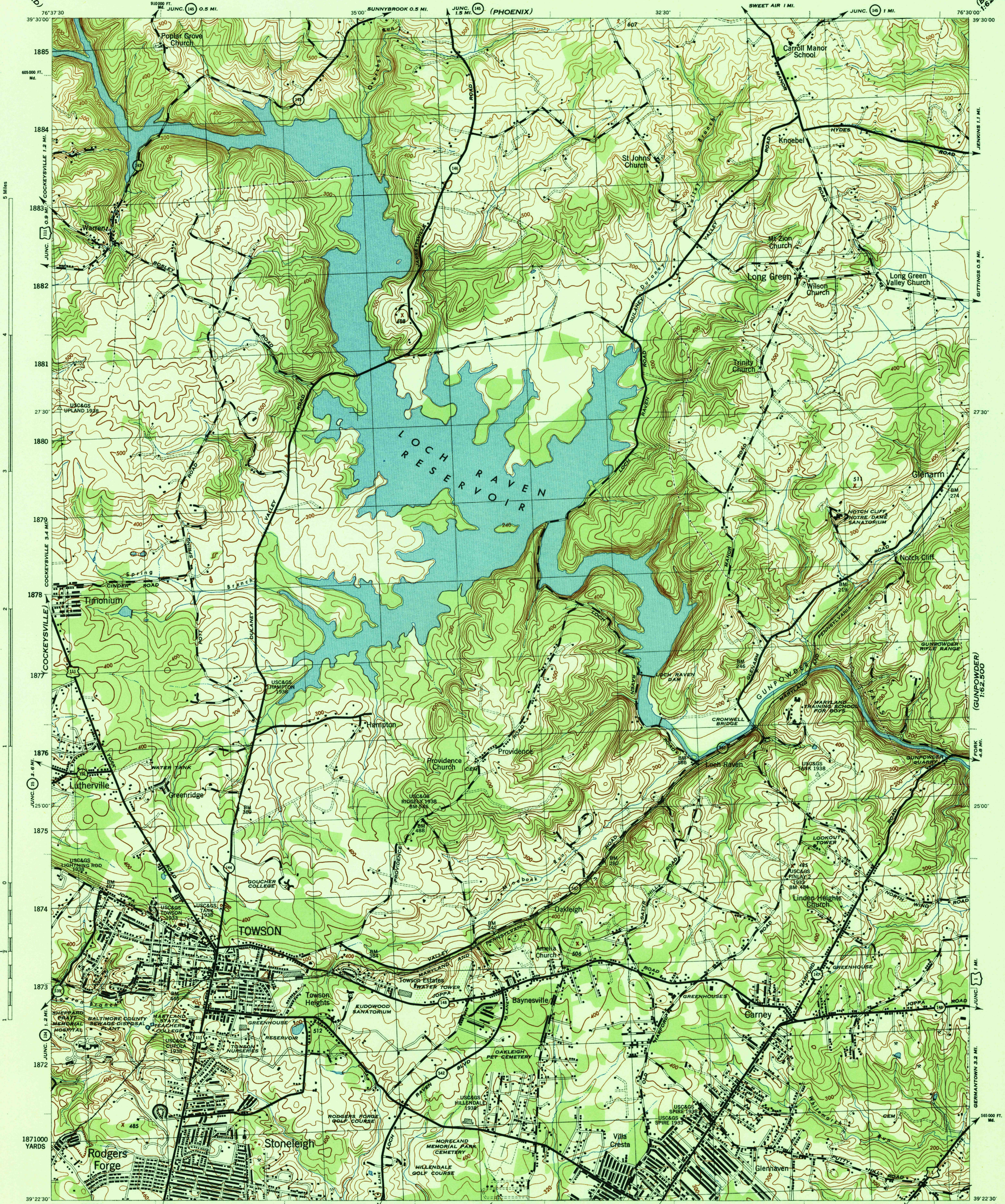


(HEREFORD)

(BELAIR)
1:62,500



Scale 1:31,680
659000 YARDS
JUNC. NORTH AVE. 4.4 MI.
BALTIMORE CITY LIMITS 0.3 MI.
664 (BALTIMORE EAST)
JUNC. NORTH AVE. 5.4 MI.
BALTIMORE CITY LIMITS 1.8 MI.
SOIL CONSERVATION SERVICE, WASHINGTON, D. C. 20252
1944

Prepared by U. S. Department of Agriculture, Soil Conservation Service, under the direction of the Chief of Engineers, U. S. Army, 1944.
Horizontal and vertical control by U. S. C. & G. S., U. S. G. S., U. S. E. D., and S. C. S., 1944.
Topography by S. C. S., 1944. Aerial photography for S. C. S., 1943.
Polyconic projection, North American datum, 1927.
This map complies with the National standard map accuracy requirements.

ROAD CLASSIFICATION 1943
Dependable hard-surface, heavy-duty road
Loose-surface graded, dry-weather road
Secondary, hard-surface, all-weather road
Dirt road
U. S. Route
State Route
More than two lanes indicated by note along road with tick at point of change
3 LANE, 3 LANE

CONTOUR INTERVAL 20 FEET
DATUM IS MEAN SEA LEVEL
ONE THOUSAND YARD GRID COMPUTED FROM GRID SYSTEM FOR PROGRESSIVE MAPS IN THE U. S. ZONE A U. S. C. & G. S. SPECIAL PUBLICATIONS NO. 59
THE LAST THREE DIGITS OF THE GRID NUMBERS ARE OMITTED
THE STATE GRID IS INDICATED BY DOTTED TICKS OUTSIDE THE NEAT LINE AT 5000 FOOT INTERVALS
NOTE: OFFICERS USING THIS MAP WILL MARK HEREON CORRECTIONS AND ADDITIONS WHICH COME TO THEIR ATTENTION AND MAIL DIRECT TO THE CHIEF OF ENGINEERS, WASHINGTON, D. C.

APPROXIMATE MEAN DECLINATION 1914
ANNUAL MAGNETIC CHANGE 30' DECREASE

USGS
Historical File
Topographic Division

TOWSON, MD.
N3922.5-W7630/7.5

U. S. G. S.
FILE COPY
Inspection and Editing