

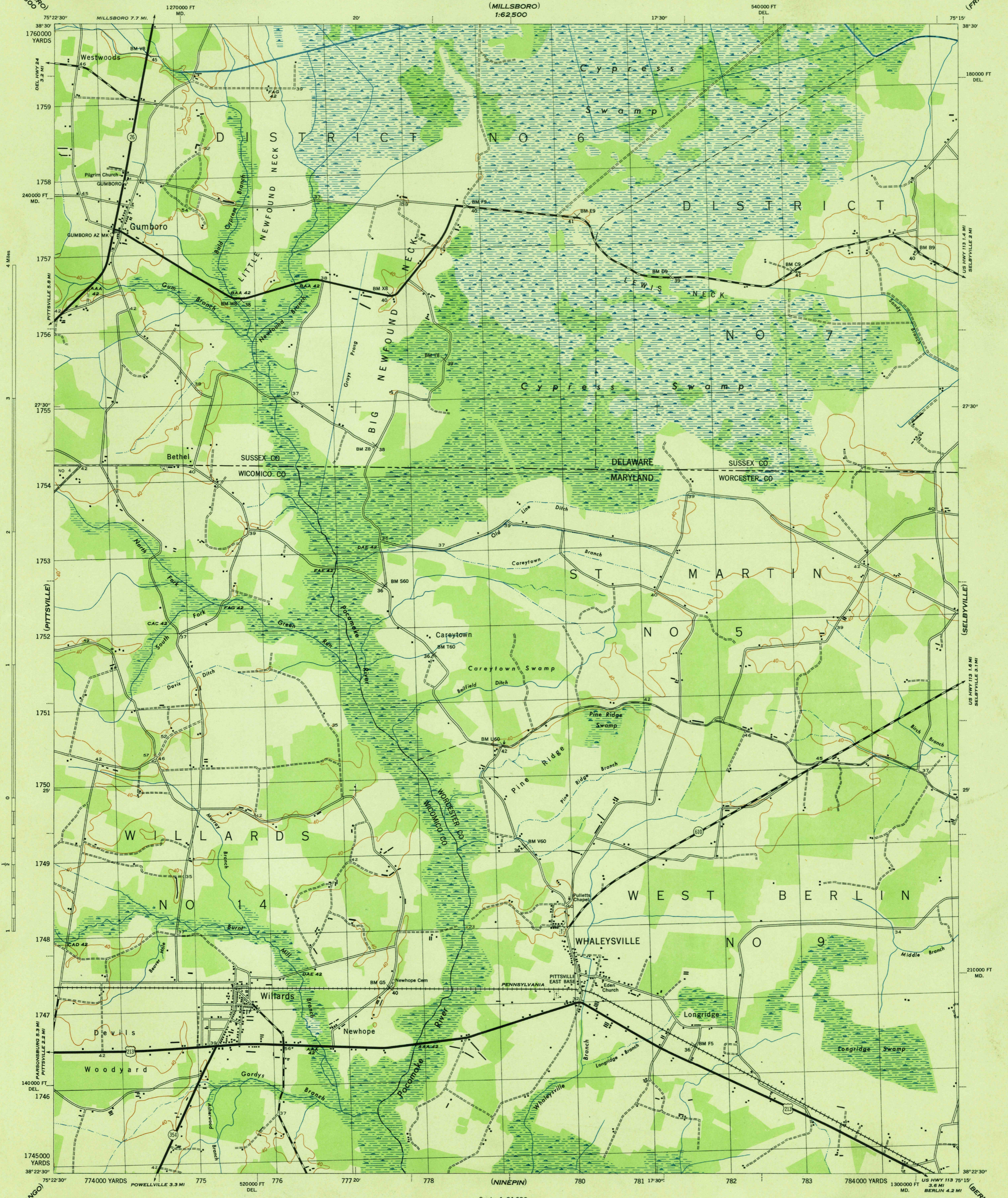
(MILLSBORO)
1:62,500

MARYLAND-DELAWARE
SCALE 1:31680

WAR DEPARTMENT
CORPS OF ENGINEERS, U. S. ARMY

WHALEYSVILLE QUADRANGLE
7½-MINUTE SERIES

(FRANKFORD)



War Department mapping project.
Under direction of the Chief of Engineers.
Control by the U. S. Coast and Geodetic Survey.
Planimetry compiled from air photographs by U. S. Coast and Geodetic Survey.
Planimetric topography and field edit by U. S. Coast and Geodetic Survey, 1942.
Polyconic projection, North American datum of 1927.
This map complies with the national standard map accuracy requirements.

ROAD CLASSIFICATION 1942

Dependable hard-surface, heavy-duty road.	Loose surface graded, dry-weather road.	U. S. route 74
Secondary, hard-surface, all-weather road.	Dirt road.	State route 23

More than two lanes indicated by note along road with tick at point of change. **3 LANE 4 LANE**

Scale 1:31680

1 1/2 0 1 Mile
1000 500 0 1000 2000 Yards

CONTOUR INTERVAL 20 FEET
DATUM IS MEAN SEA LEVEL

ONE THOUSAND YARD GRID COMPUTED FROM "GRID SYSTEM FOR PROGRESSIVE MAPS IN THE U. S." ZONE A. U. S. C. & G. S. SPECIAL PUBLICATION NO. 99
THE LAST THREE DIGITS OF THE GRID NUMBERS ARE OMITTED
THE STATE GRIDS ARE INDICATED AT 10,000 FOOT INTERVALS

NOTE: OFFICERS USING THIS MAP WILL MARK HEREON CORRECTIONS AND ADDITIONS WHICH COME TO THEIR ATTENTION AND MAIL DIRECT TO "THE CHIEF OF ENGINEERS, WASHINGTON, D. C."

REPRODUCED BY THE U. S. COAST AND GEODETIC SURVEY (7-8) 1543
ANS NO. 120803

APPROXIMATE MEAN
DECLINATION 1948
NO ANNUAL MAGNETIC CHANGE

Recoverable horizontal control stations of less than third order accuracy are shown by a circle.

USGS
Historical File
Topographic Division

WHALEYSVILLE, MD.-DEL.
N3822.5-W7515/7.5