

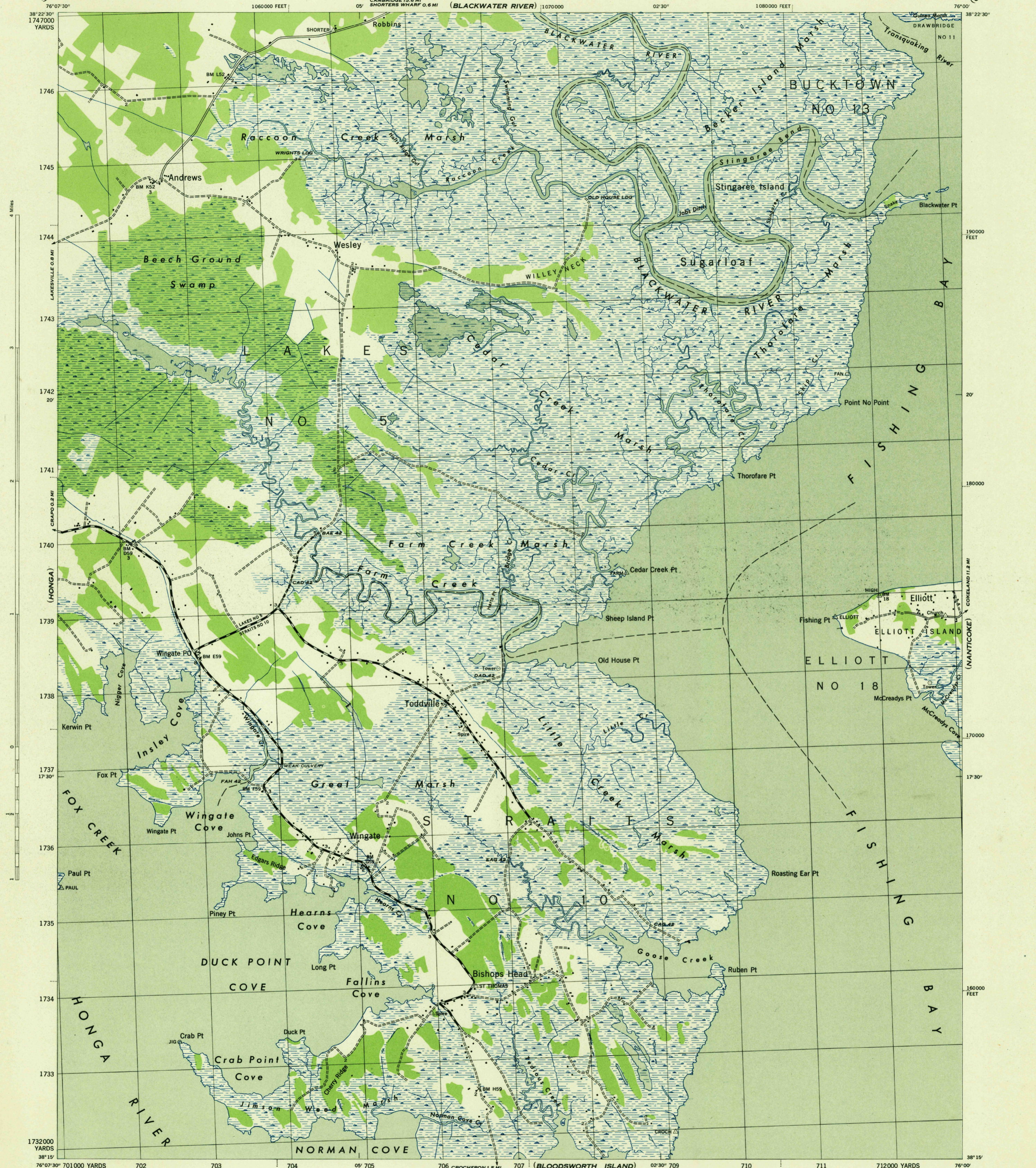
(GOLDEN HILL)

MARYLAND SCALE 1:31680
DORCHESTER COUNTY

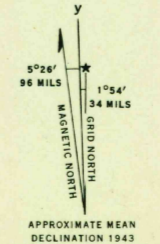
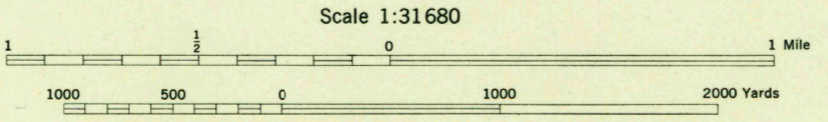
WAR DEPARTMENT
CORPS OF ENGINEERS, U. S. ARMY

WINGATE QUADRANGLE
7½ - MINUTE SERIES

(CHICAMA-COMICO)



War Department mapping project.
Under direction of the Chief of Engineers.
Control by the U. S. Coast and Geodetic Survey.
Planimetry compiled from air photographs by U. S. Coast and Geodetic Survey.
Planetable topography and field edit by U. S. Coast and Geodetic Survey, 1942.



REPRODUCED BY THE U. S. COAST AND GEODETIC SURVEY 120805
1943

Polyconic projection. North American datum of 1927.
Maryland coordinate system, single zone, is indicated
by ticks outside the neat line at 10,000 foot intervals.
Recoverable horizontal control stations of less than
third order accuracy are shown by a circle.
This map complies with the national standard map
accuracy requirements.

ROAD CLASSIFICATION 1942

Dependable hard-surface, heavy-duty road. U. S. route 78
Loose-surface graded, dry-weather road. U. S. route 78
Secondary, hard-surface, all-weather road. State route 23
Dirt road. State route 23

More than two lanes indicated by note along road with tick at point of change. 3 LANE 4 LANE

MAXIMUM GROUND ELEVATION 18 FEET
DATUM IS MEAN SEA LEVEL

ONE THOUSAND YARD GRID COMPUTED FROM GRID SYSTEM FOR PROGRESSIVE MAPS
IN THE U. S. ZONE A, U. S. C. & G. S. SPECIAL PUBLICATION NO. 59
THE LAST THREE DIGITS OF THE GRID NUMBERS ARE OMITTED
NOTE: OFFICERS USING THIS MAP WILL MARK REDON CORRECTIONS AND ADDITIONS WHICH COME
TO THEIR ATTENTION AND MAIL DIRECT TO THE CHIEF OF ENGINEERS, WASHINGTON, D. C.

USGS
Historical File
Topographic Division

WINGATE, MD.
N3815-W7600/7.5

(RICHLAND POINT)

(DEAL ISLAND)