

(BLUE RIDGE SUMMIT)

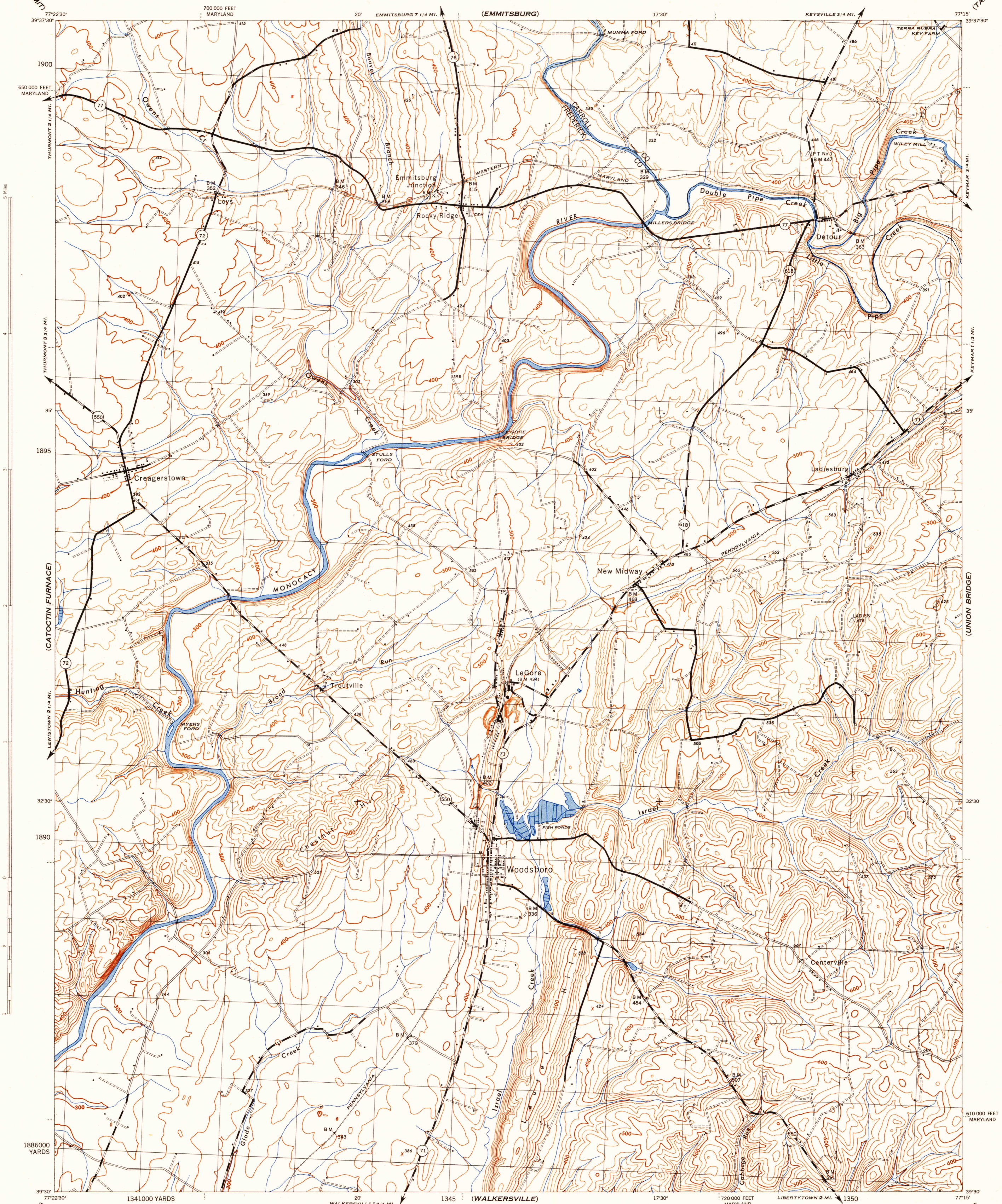
MARYLAND 1:31,680

WAR DEPARTMENT
CORPS OF ENGINEERS, U. S. ARMY

WOODSBORO QUADRANGLE

7 1/2 - MINUTE SERIES

(TANEYTOWN)



Prepared by U. S. Department of Agriculture, Forest Service, under the direction of the Chief of Engineers, U. S. Army, 1944.
Control by U. S. Coast and Geodetic Survey, U. S. Geological Survey, and Forest Service.
Topography by Forest Service stereophotogrammetric methods KEK plotter.
Photography by Soil Conservation Service, 1943.
Polyconic projection, 1927 North American datum.

ROAD CLASSIFICATION

Dependable hard-surface, heavy duty road.	Loose-surface graded, dry weather road.	U. S. Route	160
Secondary hard-surface, all-weather road.	Dirt road.	State Route	30

More than two lanes indicated by note along road with tick at point of change. **3 LANE 4 LANE**

THIS MAP COMPLIES WITH THE NATIONAL STANDARD MAP ACCURACY REQUIREMENTS.

Scale 1:31,680

1 000 500 0 500 1000 2000 Yards

CONTOUR INTERVAL 20 FEET
DATUM IS MEAN SEA LEVEL (1929 ADJ.)

ONE THOUSAND YARD GRID COMPUTED FROM GRID SYSTEM FOR PROGRESSIVE MAPS
IN THE U. S. ZONE B U. S. C. & G. S. SPECIAL PUBLICATION NO. 59
THE LAST THREE DIGITS OF THE GRID NUMBERS ARE OMITTED

TEN THOUSAND FOOT GRID BASED ON MARYLAND PLANE COORDINATE SYSTEM

NOTE: OFFICERS USING THIS MAP WILL MARK HEREON CORRECTIONS AND ADDITIONS WHICH COME
TO THEIR ATTENTION AND MAIL DIRECT TO "THE CHIEF OF ENGINEERS, WASHINGTON, D. C."

APPROXIMATE MEAN
DECLINATION 1944
NO ANNUAL MAGNETIC CHANGE

WOODSBORO, MD.
N3930-W7715/7.5