

U.S.G.S.
FILE COPY
Inspection and Editing.

STATE OF MARYLAND
GEOLOGICAL SURVEY
840-N-IV-E-72

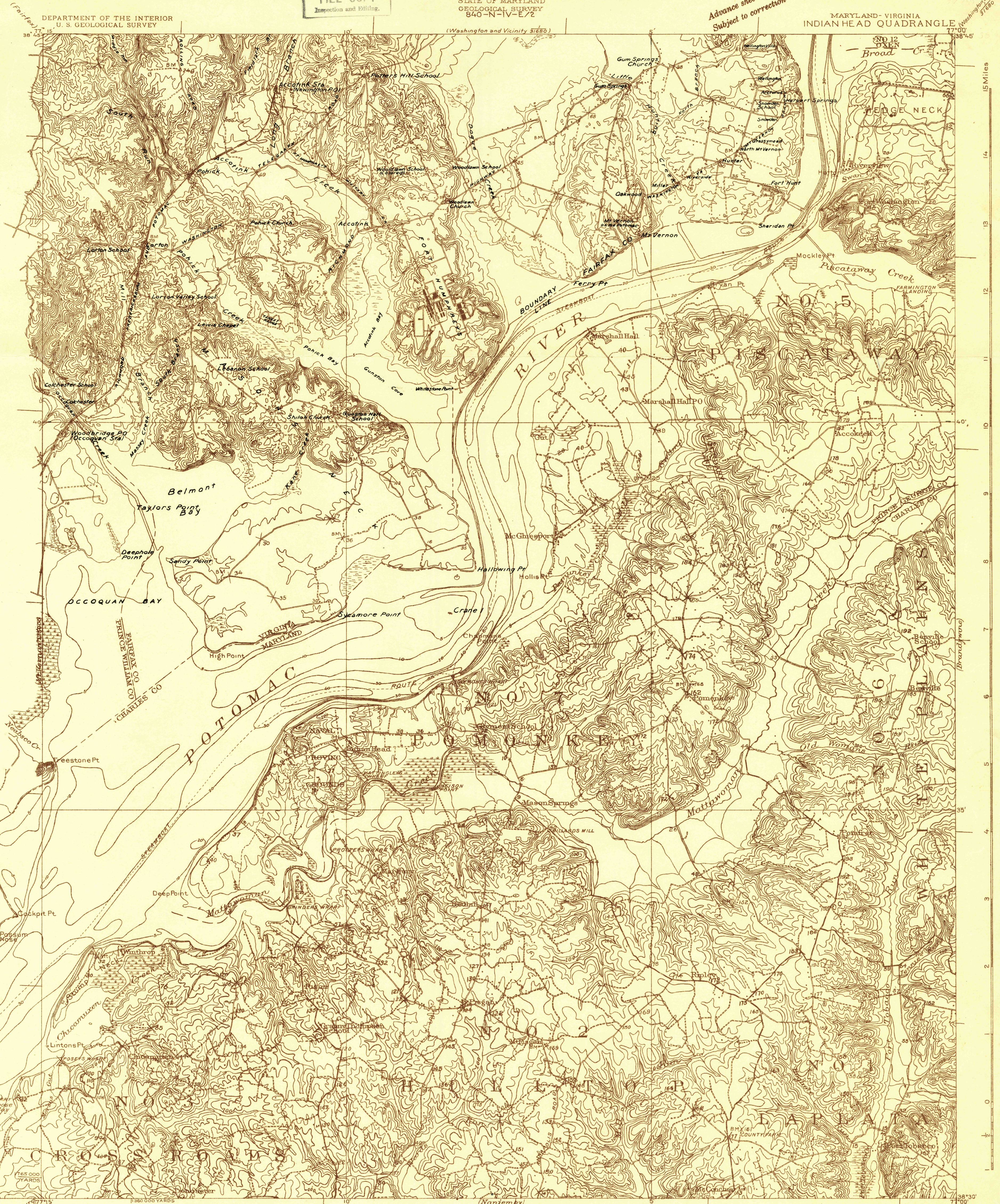
RETAINED COPY
This sheet must not be taken from
the files without an order from the
Chief Topographic Engineer.

TOPOGRAPHIC FILES

MAY 17 1923

MARYLAND-VIRGINIA
INDIAN HEAD QUADRANGLE

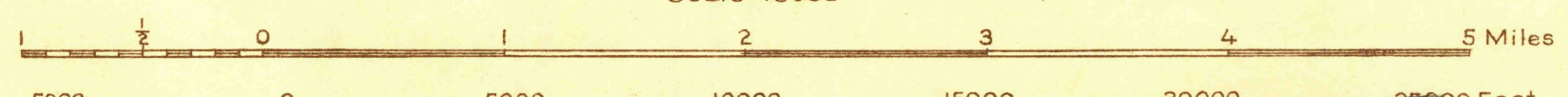
Advance sheet
Subject to correction



Topography by Corps of Engineers U.S. Army, Fred Graff, Jr.
R.L. Harrison, and W. Carvel Hall
Control and shore line, in part by U.S. Coast and Geodetic Survey
Underwater contours based upon U.S. Coast and Geodetic Survey charts
Surveyed in 1911 and 1923



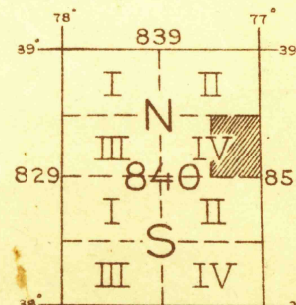
APPROXIMATE MEAN
DECLINATION, 1923



Scale 48500

Underwater contours at depths of 5, 10, 20, 30, 40 and 60 feet
below mean low water

U.S.G.S.
Topographic Division
Inspection and Editing.



Polyconic projection. North American datum
5000 yard grid based upon U. S. zone system, B
Shore line is the margin of mean high water 1.8 feet
above mean low water at Glymont.

INDIAN HEAD, MD.-VA

MARYLAND