

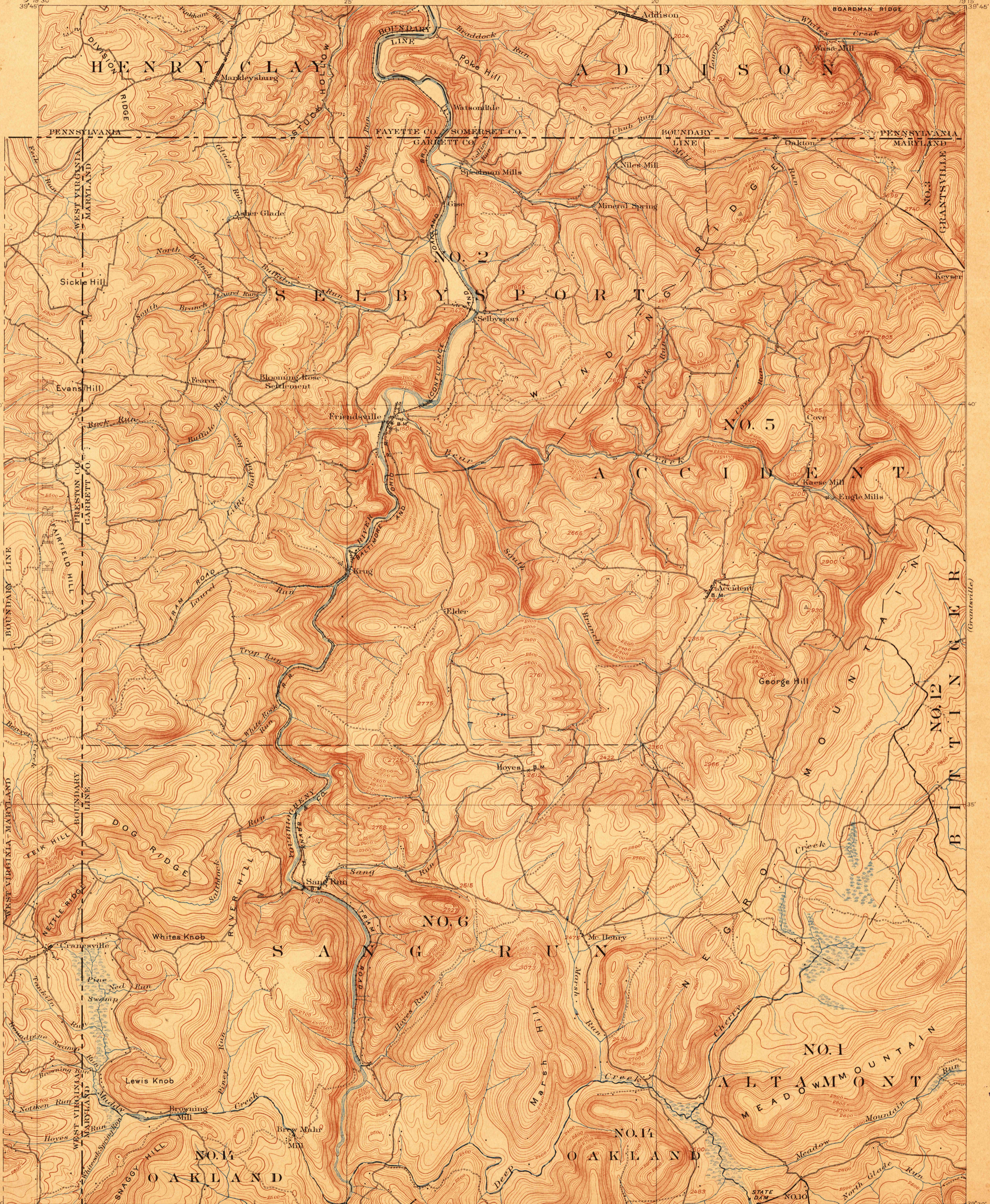
U. S. G. S.
FILE COPY
Ed. Div. Topographic Maps.

TOPOGRAPHIC SHEET

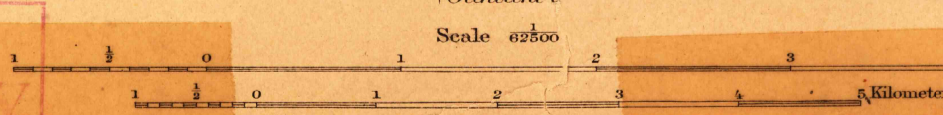
STATE OF MARYLAND
WILLIAM BULLOCK CLARK
STATE GEOLOGIST

MARYLAND-WEST VIRGINIA-PENNSYLVANIA
ACCIDENT QUADRANGLE

U. S. GEOLOGICAL SURVEY
CHARLES D. WALCOTT, DIRECTOR



H.M. Wilson, Geographer in charge.
Control by Geo. I. Hawkins and W. Carvel Hall.
Topography by J.H. Jennings.
Surveyed in 1898 in cooperation with the
States of Maryland and Pennsylvania.



Contour interval 20 feet.
Datum is mean sea level.

U.S. Geological Survey
NOV 30 1900 260Y
ACCIDENT
MD.-W.VA.-PA.
Edition of Oct. 1900.
Topographic Division
USGS
Historical File