

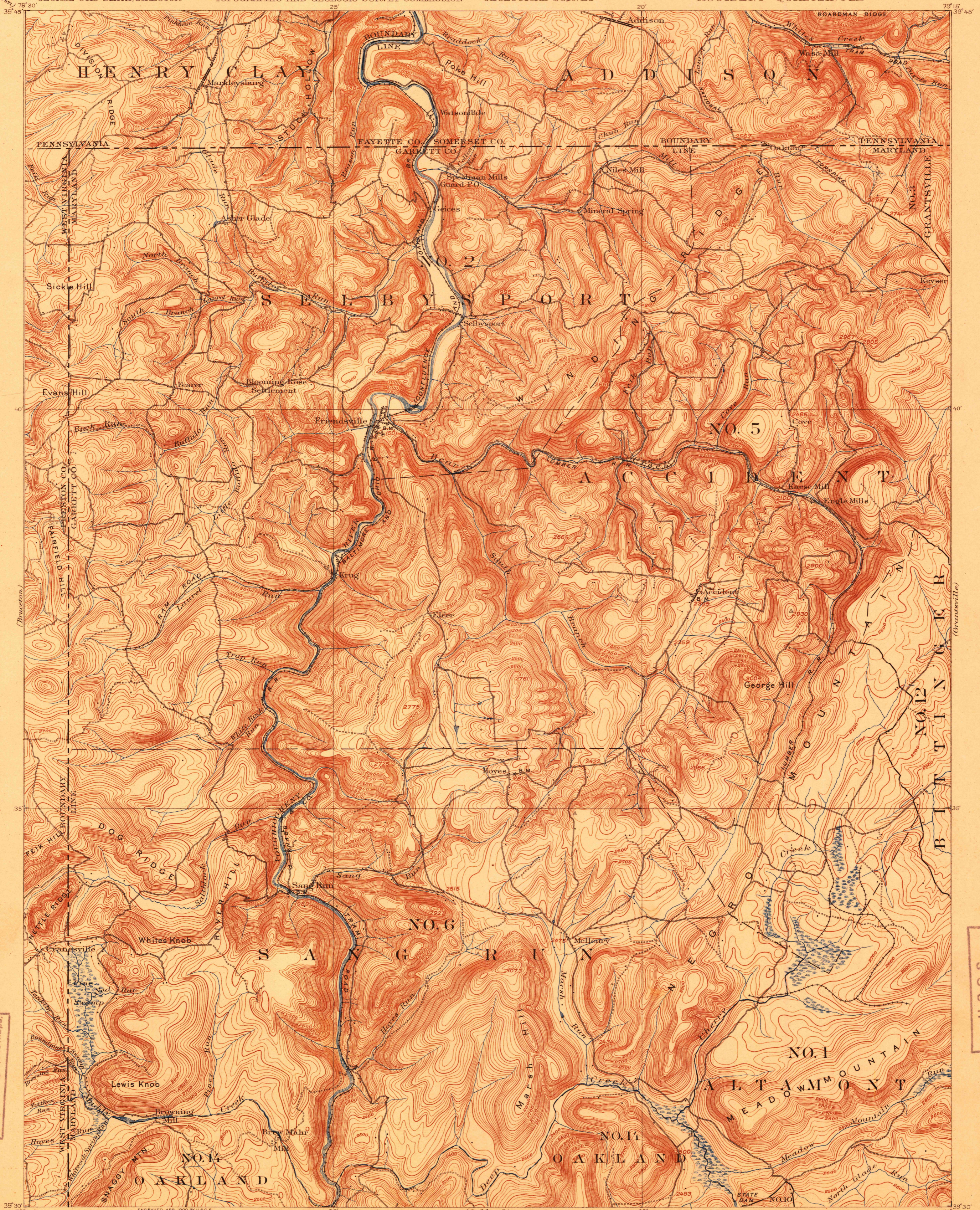
TOPOGRAPHY

DEPARTMENT OF THE INTERIOR
FRANKLIN K. LANE, SECRETARY
U.S. GEOLOGICAL SURVEY
GEORGE OTIS SMITH, DIRECTOR

STATE OF PENNSYLVANIA
TOPOGRAPHIC AND GEOLOGIC SURVEY COMMISSION

STATE OF MARYLAND
GEOLOGICAL SURVEY

MARYLAND-WEST VIRGINIA-PENNSYLVANIA
ACCIDENT QUADRANGLE



U.S.G.S.
FILE COPY
Ed. Div. Topographic Maps.

U.S.G.S.
FILE COPY
Ed. Div. Topographic Maps.

H. M. Wilson, Geographer in charge.
Control by Geo. J. Hawkins and W. Carvel Hall.
Topography by J. H. Jennings.
Surveyed in 1898 in cooperation with the States of Maryland and Pennsylvania.

Scale 1:25,000
1 2 3 4 Miles
1 2 3 4 Kilometers
Contour interval 20 feet.
Datum is mean sea level.

USGS
Historical File
Topographic Division
Edition of Oct. 1900, corrected 1907, reprinted 1918.
APR 5 - 1918 2100

NOTE: Geologic folio 160, price 5 cents, treats of the geology and the coal, fireclay, lime, building stone, and road material of this area.

ACCIDENT, MD.-W.V.-PA.