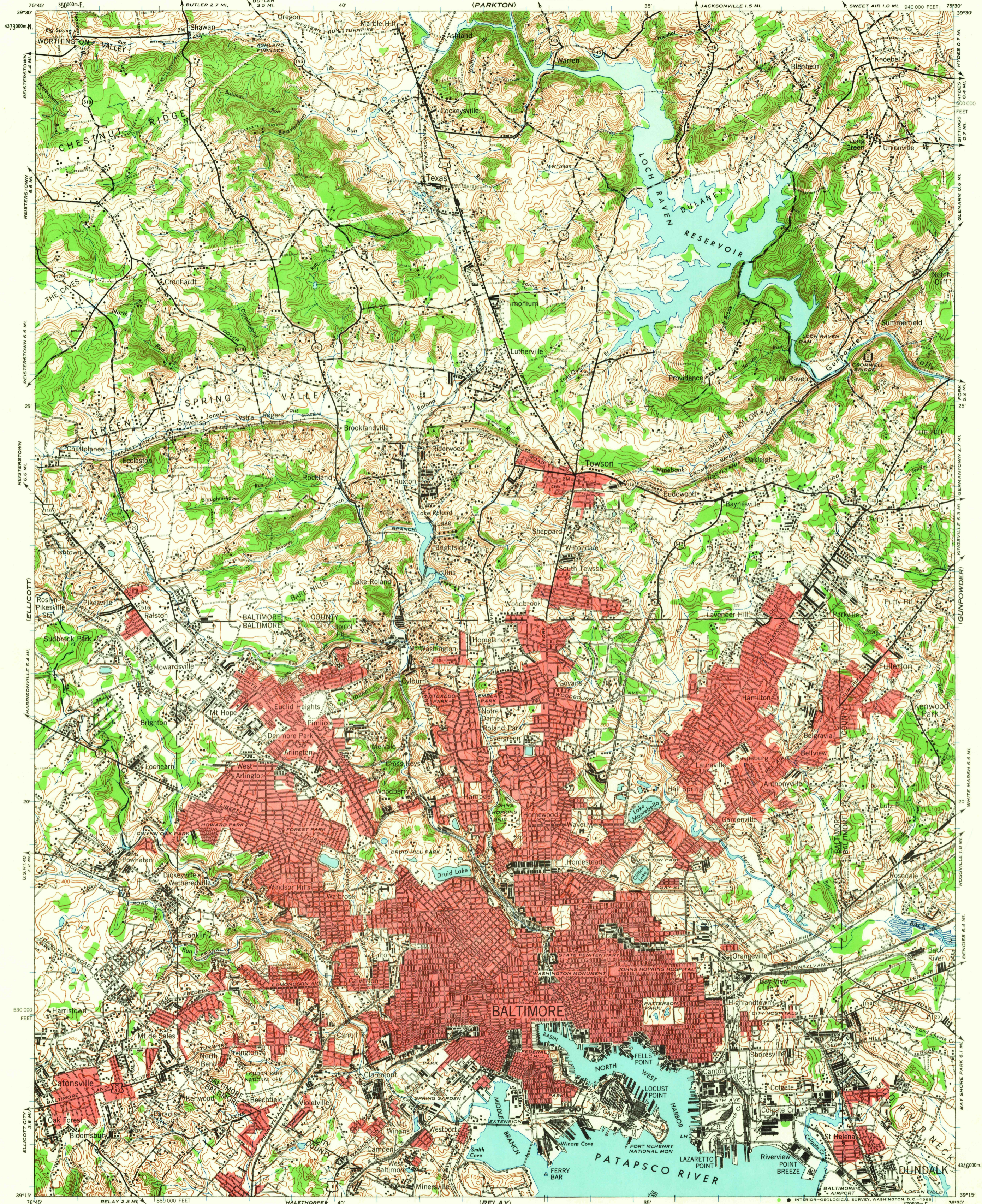
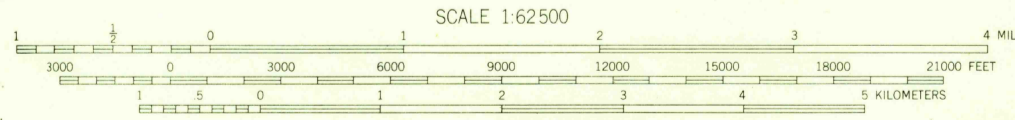


(WESTMINSTER)

(BEL AIR)



Prepared under the direction of the Chief of Engineers, U. S. Army, by the Army Map Service, Kansas City unit, 1943.
 Based on U. S. G. S. quadrangle, Baltimore, 1:62,500 (1904).
 Vertical control by U. S. Geological Survey.
 Horizontal control by U. S. G. S. and U. S. C. & G. S.
 City of Baltimore Topographic Survey and State of Maryland, 1902.
 Revised from single lens aerial photographs.
 Aerial photography - A. A. A., Department of Agriculture, 1938.
 Polyconic Projection, North American Datum 1927.



CONTOUR INTERVAL 20 FEET
 DATUM IS MEAN SEA LEVEL

10,000-FOOT GRID TICKS, MARYLAND PLANE COORDINATE SYSTEM, SHOWN IN BLACK
 100-METER GRID TICKS, UNIVERSAL TRANSVERSE MERCATOR SYSTEM, ZONE 18, SHOWN IN BLUE

REPRINTED FROM MILITARY EDITION FOR CIVIL USE
 FOR SALE BY U. S. GEOLOGICAL SURVEY, WASHINGTON, D. C. 20242
 A FOLDER DESCRIBING TOPOGRAPHIC MAPS AND SYMBOLS IS AVAILABLE ON REQUEST

ROAD CLASSIFICATION 1943

Dependable, hard-surface, heavy duty road	Loose-surface graded, dry weather road	U. S. Route
Secondary, hard-surface, all-weather road	Dirt road	State Route
More than two lanes indicated by note along road with tick at point of change.		3-LANE, 4-LANE

USGS
 Historical File
 Topographic Division

HISTORICAL
 U.S.G.S.
 FILE COPY
 TOPOGRAPHIC DIVISION

This area also covered by 7.5-minute, 1:24,000-scale maps: Towson 1957, Cockeysville 1957, Baltimore West 1953, and Baltimore East 1953

BALTIMORE, MD.
 N3915-W7630/15
 1943

SEP 14 1965

5825