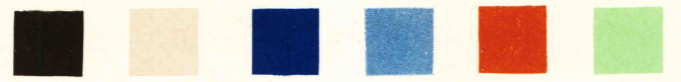


(WESTMINSTER)

MARYLAND 1:62,500



WAR DEPARTMENT
CORPS OF ENGINEERS, U. S. ARMY

FIRST EDITION AMS-1

BALTIMORE QUADRANGLE
15 MINUTE SERIES

(BEL AIR)



10 Miles

9 Miles

8 Miles

7 Miles

6 Miles

5 Miles

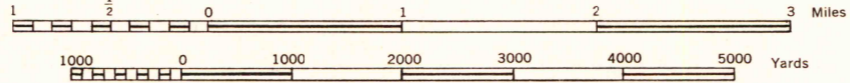
4 Miles

3 Miles

2 Miles

1 Mile

Scale 1:62,500



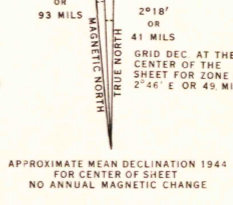
CONTOUR INTERVAL 20 FEET
DATUM IS MEAN SEA LEVEL

FIVE THOUSAND YARD GRID COMPUTED FROM GRID SYSTEM FOR PROGRESSIVE MAPS
IN THE U. S. ZONE A U. S. C. & G. S. SPECIAL PUBLICATION NO. 59
THE LAST THREE DIGITS OF THE GRID NUMBERS ARE OMITTED

MARYLAND STATE GRID ZONE IS INDICATED BY DOTTED TICKS
OUTSIDE THE NEAT LINE AT 10,000 FOOT INTERVALS

THE OVERLAPPING GRID ZONE IS INDICATED BY SHORT BROKEN TICKS CROSSING THE NEAT LINE

NOTE: OFFICERS USING THIS MAP WILL MARK HEREON CORRECTIONS AND ADDITIONS WHICH COME
TO THEIR ATTENTION AND WILL DIRECT TO THE CHIEF OF ENGINEERS, WASHINGTON, D. C.



APPROXIMATE MEAN DECLINATION 1944
NO ANNUAL MAGNETIC CHANGE

Use diagram only to obtain numerical values.
To determine magnetic north line connect the
pivot point "P" on the south edge of the map
with the value of the angle between GRID
NORTH and MAGNETIC NORTH, as plotted on
the degree scale at the north edge of the map.

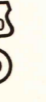
4 / 44 SX

BALTIMORE, MD.
N3915-W7630/15

First Edition (AMS-1), 1944.
Prepared under the direction of the Chief of Engineers, U. S. Army, by the
Army Map Service, Kansas City unit, 1943.
Based on U. S. G. S. quadrangle, Baltimore, 1:62,500 (1904).
Vertical control by U. S. Geological Survey.
Horizontal control by U. S. G. S. and U. S. C. & G. S.
City of Baltimore Topographic Survey and State of Maryland, 1902.
Revised from single lens vertical aerial photographs.
Aerial photography - A. A. Department of Agriculture, 1938.
Polyconic Projection, North American Datum 1927.

ROAD CLASSIFICATION 1943
Dependable hard surface, heavy duty road
Secondary hard surface, all-weather road
More than two lanes indicated by note along road with tick at point of change

Loose-surface graded, dry weather road
U. S. Route
State Route
Dirt road



LANE | 4 LANE

(NORTH POINT)

(LAUREL)