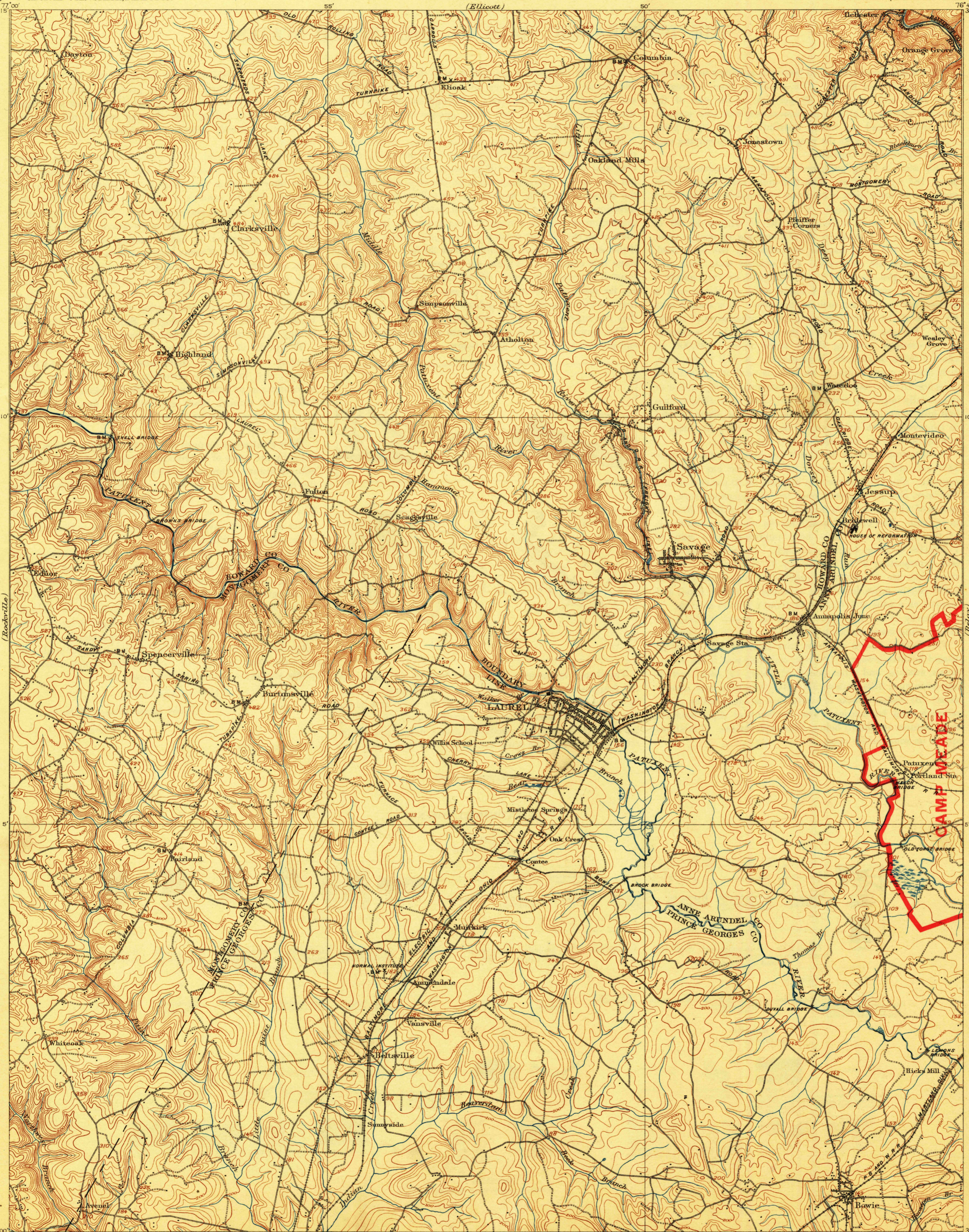


(Baltimore)



U. S. G. S.
FILE COPY
Ed. Div. Topography

H. M. Wilson, Geographer in charge.
J. H. Jennings, in charge of section.
Topography by A. E. Murlin, W. C. Hall, L. S. Leopold, A. O. Burkland,
Albert Pike, T. F. Slaughter, and J. S. B. Daingerfield.
Control by Coast and Geodetic Survey, C. B. Kendall, and W. M. Beaman.
Surveyed in 1890, 1900, and 1904-1906.

Scale 62500
4 Miles
5 Kilometers
Contour interval 20 feet.
Datum is mean sea level.

USGS
Historical File
Topographic Division
Edition of Aug. 1907, reprinted 1918.
MAR 14 1918 5075
LAUREL, MD.