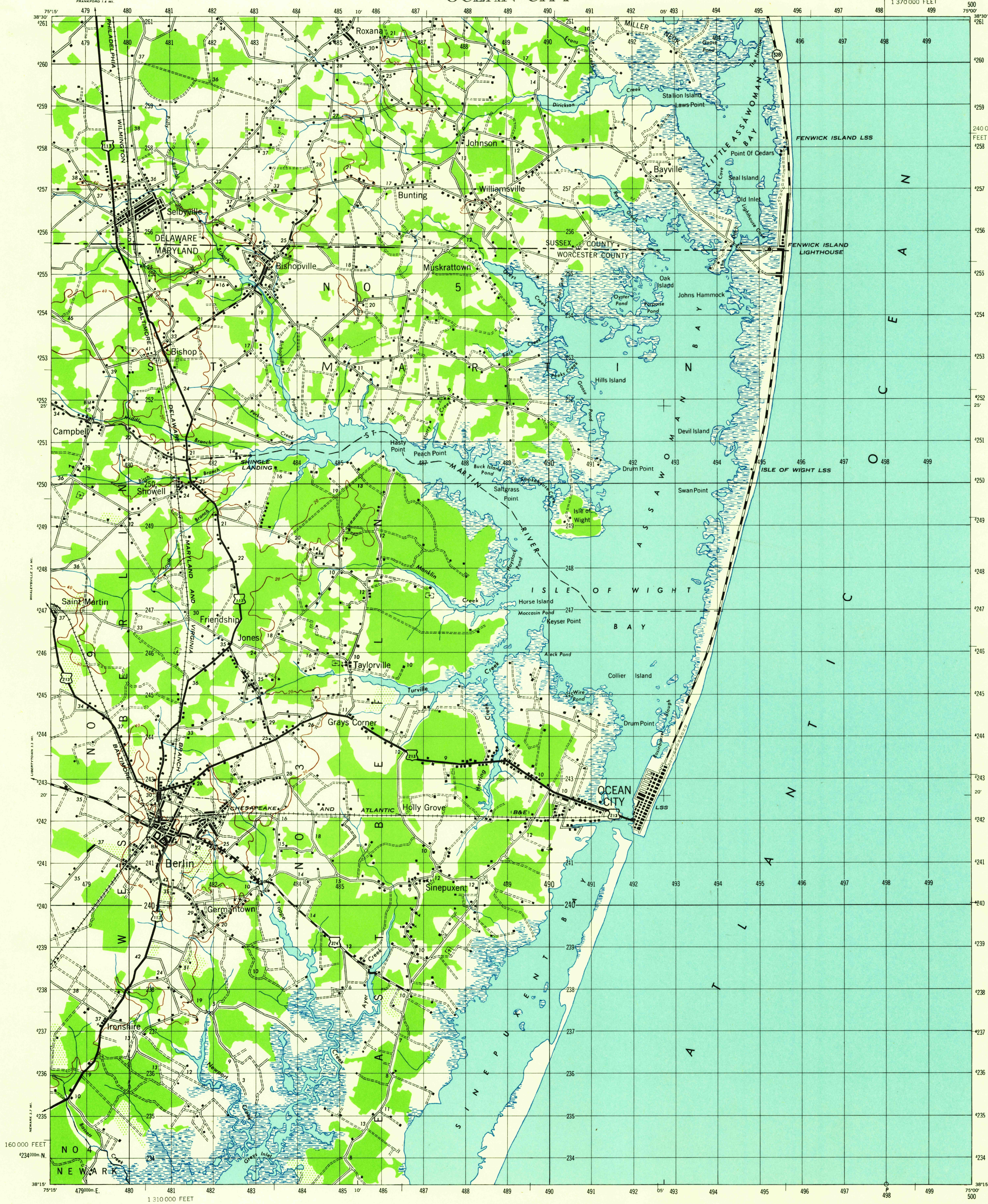


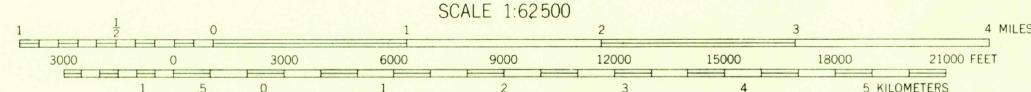
OCEAN CITY



Prepared under the direction of the Chief of Engineers by the Army Map Service (AM), Corps of Engineers, Department of the Army, Washington, D. C. Scale changed, marginal data revised and Universal Transverse Mercator Grid added, 1948. Copied in 1948 from Maryland, 1:62,500, AMS, 5960 I, 1942. Original map compiled by Planimeter Surveys. Planimetry revised by photoplanimetric methods. Horizontal and vertical control by USGS. Map not field checked.

LEGEND

- |   |   |
|---|---|
| Hard surface, heavy duty road, more than two lanes wide                       | Loose surface, graded, dry weather road |
| Hard surface, heavy duty road, two lanes wide; Federal route marker           | Trail; dirt road                        |
| Secondary, hard surface, all-weather road, two lanes wide; State route marker | Railroad in street; Carline in street   |
| RAILROADS   | UNDER CONSTRUCTION                      |
| Standard gauge  | Single track                            |
| Narrow gauge  | Double track                            |
| BOUNDARIES  | ABANDONED                               |
| Single track carline  | Single track                            |
| International   | Double track carline                    |
| State   | Mine                                    |
| County (with monument)  | Triangulation station                   |
| Election District   | Bench mark                              |
| Reservation   | Spot elevation                          |
| Military reservation  | Woods                                   |
| School; Church  | Woods-brushwood                         |
| Cemetery  | Brushwood                               |
| Churchyard  | Swamp, marsh                            |
|   | Rocks awash at low tide                 |
|   | Wharf, pier                             |
|   | Man-made shoreline                      |
|   | Intermittent lake                       |
|   | Intermittent stream                     |
|   | Dam                                     |
|   | Rapids; Falls                           |
|   | Large rapids and falls                  |
|   | Man-made shoreline                      |



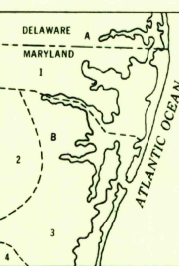
CONTOUR INTERVAL 20 FEET  
DATUM IS MEAN SEA LEVEL  
TRANSVERSE MERCATOR PROJECTION  
NORTH AMERICAN DATUM  
ONE THOUSAND METER UNIVERSAL TRANSVERSE MERCATOR GRID, ZONE 18

REPRINTED FROM MILITARY EDITION FOR CIVIL USE  
FOR SALE BY U.S. GEOLOGICAL SURVEY, WASHINGTON 25, D. C.  
A FOLDER DESCRIBING TOPOGRAPHIC MAPS AND SYMBOLS IS AVAILABLE ON REQUEST

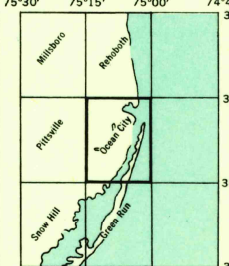
USGS  
Historical File  
Topographic Division

TRUE NORTH  
MAGNETIC NORTH  
APPROXIMATE MEAN DECLINATION, 1942

INDEX TO BOUNDARIES



INDEX TO ADJOINING SHEETS



U.S.G.S.  
FILE COPY  
TOPOGRAPHIC DIVISION

OCEAN CITY, MD., DEL.  
N3815-W7500/15

1942

APR 26 1961  
2030