



*(Gainesville 7715)*

*(Elbow)*

*(Sawney)*

*(Lansel)*

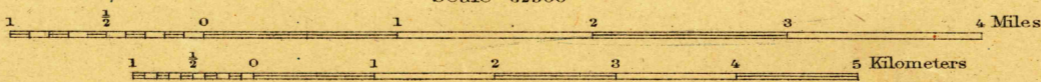
*(Mt. Vernon 7200)*

*(Washington)*

H.M. Wilson, Geographer.  
J.H. Jennings, in charge of section.  
Topography by W.C. Hall and J.S.B. Daingerfield.  
Control by Coast and Geodetic Survey, C.B. Kendall, and Albert Pike.  
Surveyed in 1906.

SURVEYED IN COOPERATION WITH THE STATE OF MARYLAND.

APPROXIMATE MEAN  
ECLIPSION 1906.



Contour interval 20 feet.  
Datum is mean sea level.

USGS  
Historical File  
Topographic Division

U.S.G.S.  
FILE COPY  
Div. Topographic Maps.

Edition of Mar. 1908, reprinted 1918.

JAN 31 1919 2340

ROCKVILLE, MD. - VA.

U.S.G.S.  
FILE COPY  
Ed. Div. Topographic Maps.