

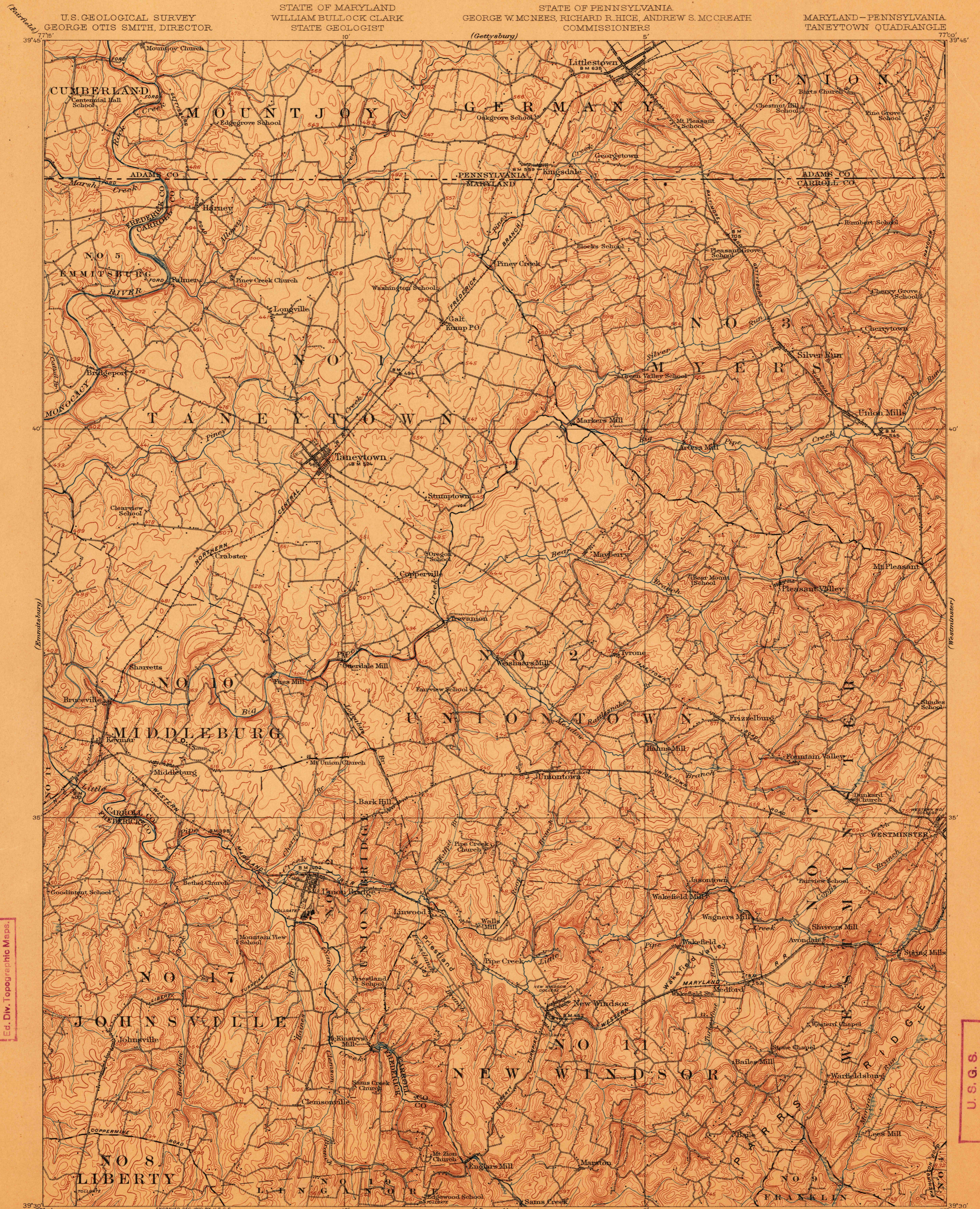
TOPOGRAPHY

U.S. GEOLOGICAL SURVEY
GEORGE OTIS SMITH, DIRECTOR

STATE OF MARYLAND
WILLIAM BULLOCK CLARK
STATE GEOLOGIST

STATE OF PENNSYLVANIA
GEORGE W. MCNEES, RICHARD R. HICE, ANDREW S. MCCREATH
COMMISSIONERS

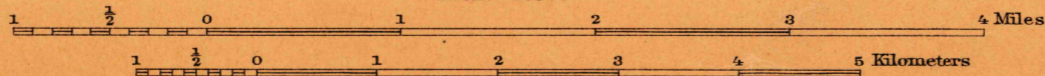
MARYLAND-PENNSYLVANIA
TANEYTOWN QUADRANGLE



R.B. Marshall, Chief Geographer.
Frank Sutton, Geographer in charge.
Topography by J.H. Wheat and J.S.B. Daingerfield.
Control by F.J. McMaugh and C.H. Semper.
Surveyed in 1908 and 1909.

SURVEYED IN COOPERATION WITH THE STATES OF MARYLAND AND PENNSYLVANIA.

Dangerfield
Wheat



Contour interval 20 feet.
Datum is mean sea level.

APPROXIMATE MEAN
DECLINATION 1909.

Edition of Feb. 1911.

MAY 31 1911 3453
USGS

Historical File
Topographic Division TANEYTOWN, MD.-PA.