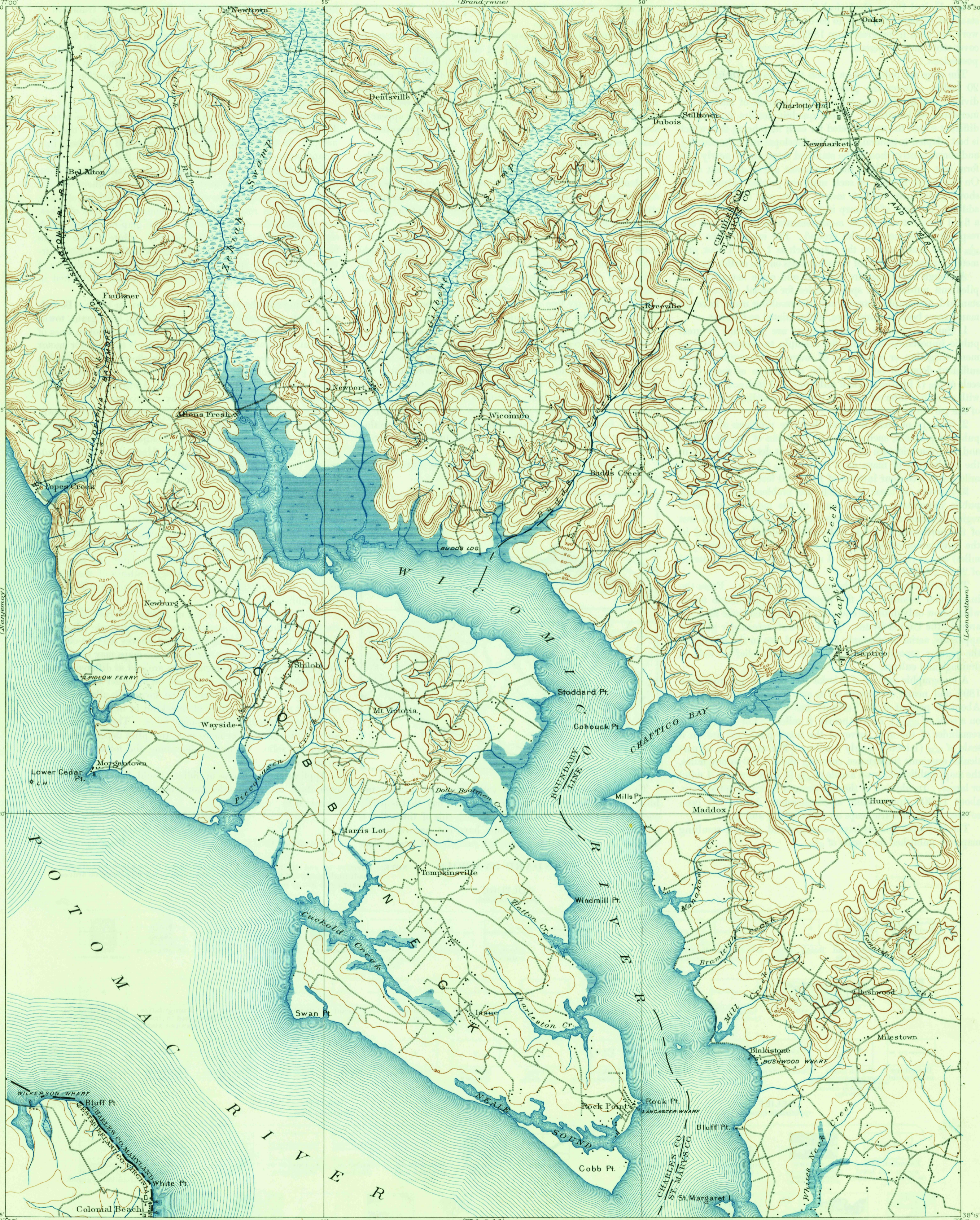


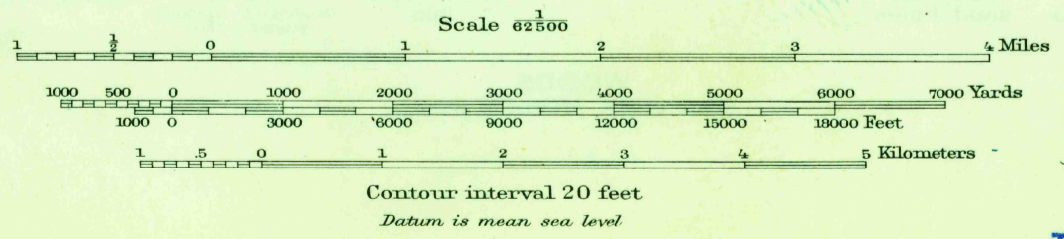
U. S. G. S.
FILE COPY
Inspection and Editing.



U. S. G. S.
FILE COPY
Inspection and Editing.

Henry Gannett, Chief Topographer.
Gilbert Thompson, Chief Geographer in charge.
Triangulation and shore line by U.S. Coast and Geodetic Survey.
Topography by A.E. Murlin.
Surveyed in 1890.
Culture revised in St. Marys county by J.M. Harris in 1900
and in Charles county by R.L. Harrison in 1911.
Revised in cooperation with the State of Maryland.

APPROXIMATE MEAN
DECLINATION 1900



Edition of Jan. 1914, reprinted 1947
Polyconic projection.

This area surveyed by reconnaissance
methods. Maps of adjacent areas
surveyed by modern methods may not
join this sheet exactly.

USGS
Historical File
Topographic Division
U. S. G. S.
FILE COPY
Inspection and Editing.

MD-VA.
WICOMICO
N3815-W7645/15

DEC 23 1947

2065