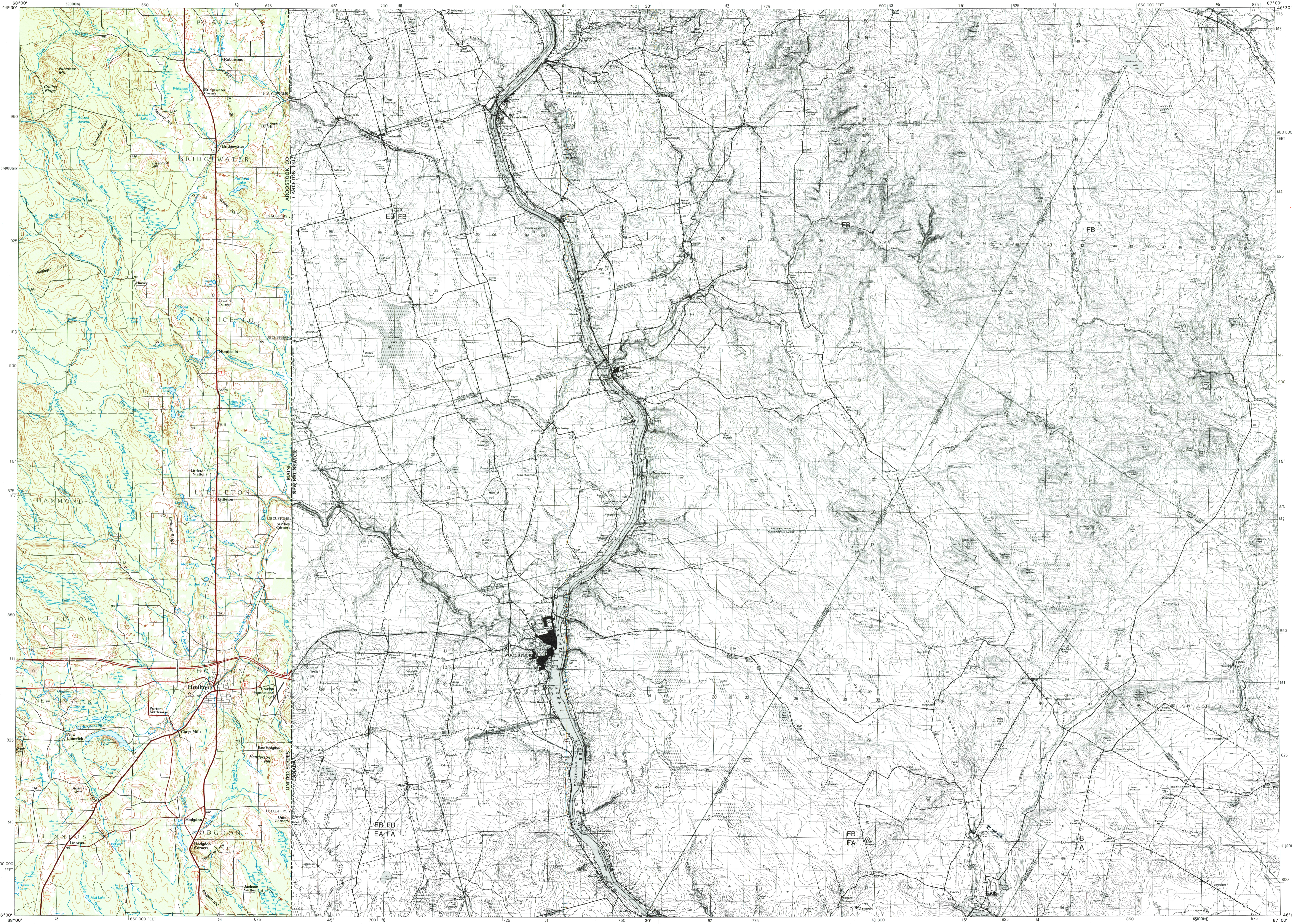


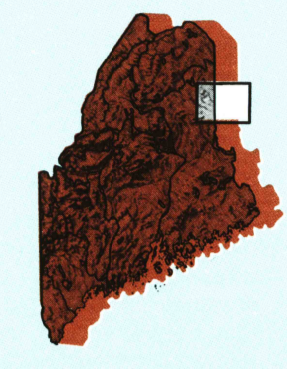
HOULTON, MAINE-NEW BRUNSWICK

30 X 60 MINUTE SERIES (TOPOGRAPHIC)



Houlton MAINE-NEW BRUNSWICK

1:100 000-scale metric topographic map



30 X 60 MINUTE QUADRANGLE SHOWING

- Contours and elevations in meters
- Highways, roads and other manmade structures
- Water features
- Woodland areas
- Geographic names

USGS Library Reston, VA, Topo Archive



1993

Produced by the United States Geological Survey
 Compiled from USGS 1:62 500-scale topographic maps dated 1951. Planimetry revised from aerial photographs taken 1989 and other source data. Revised information not field checked. Map edited 1993.
 Canadian portion copied from Department of Energy, Mines and Resources, 1:50,000-scale topographic maps dated 1981.
 Canadian portion of this map © by Her Majesty the Queen in Right of Canada, and may not be reproduced or redistributed without express consent of Energy, Mines and Resources Canada, 4th Floor, 615 Booth Street, Ottawa, Ontario, K1A 0E9.
 1927 North American Datum (NAD 27). Projection and 10 000-meter grid: Universal Transverse Mercator, zone 19 25 000-foot ticks. Maine coordinate system, east zone.
 The difference between NAD 27 and North American Datum of 1983 (NAD 83) is too small to show at this scale. The values of the shift between the datums for 7.5-minute intersections are given in USGS Bulletin 1875.
 CONTOUR INTERVAL 10 METERS IN UNITED STATES
 CONTOUR INTERVAL 10 METERS IN CANADA
 NATIONAL GEODETIC VERTICAL DATUM OF 1929
 ELEVATIONS SHOWN TO THE NEAREST METER

THE U.S. PORTION OF THIS MAP COMPLIES WITH NATIONAL MAP ACCURACY STANDARDS

CONVERSION TABLE		DECLINATION DIAGRAM		ADJOINING MAPS		
Meters	Feet	Magnetic Declination		1	2	3
1	3.2808	35° 20' N		1	2	3
2	6.5617	1° 00' N		4	5	
3	9.8425	35° 20' N		6	7	8
4	13.1234	1° 00' N				
5	16.4042	35° 20' N				
6	19.6850	1° 00' N				
7	22.9659	35° 20' N				
8	26.2467	1° 00' N				
9	29.5276	35° 20' N				
10	32.8084	1° 00' N				

To convert meters to feet multiply by 3.2808
 To convert feet to meters multiply by 0.3048

UTM grid convergence (EN) and 1983 magnetic declination (MN) at center of map Diagram is approximate

1 Presque Isle
 2 Fort Fairfield
 3 Oakfield
 4 Millinocket
 5 Dandorath

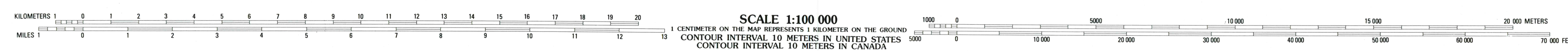
FOR SALE BY U.S. GEOLOGICAL SURVEY DENVER, COLORADO 80225, OR RESTON, VIRGINIA 22092



Topographic Map Symbols

- Primary highway, hard surface
- Secondary highway, hard surface
- Light duty road, principal street, hard or improved surface
- Other road or street, trail
- Route marker: Interstate, U.S., State
- Railroad: standard gage, narrow gage
- Bridge: overpass, underpass
- Built up area, locality, elevation
- Airport: landing field, landing strip
- National boundary
- State boundary
- County boundary
- Civil township boundary
- National or State reservation boundary
- Land grant boundary
- U.S. public lands survey: range, township, section
- Range, township; section line: protracted
- Power transmission line; pipeline
- Dam; dam with lock
- Cemetery; building
- Windmill; water well; spring
- Mine shaft; adit or cave; mine, quarry; gravel pit
- Campground, picnic area, U.S. location monument
- Ruin; cliff dwelling
- Distorted surface: strip mine, lava, sand
- Contours: index; intermediate; supplementary
- Bathymetric contours: index; intermediate
- Stream, lake: perennial; intermittent
- Moisture, large and small; falls, large and small
- Area to be submerged, marsh, swamp
- Land subject to controlled inundation; woodland
- Scrib; mangrove
- Orchard; vineyard

A pamphlet describing topographic maps is available on request



HOULTON, MAINE-NEW BRUNSWICK 46067-A1-TM-100

1993