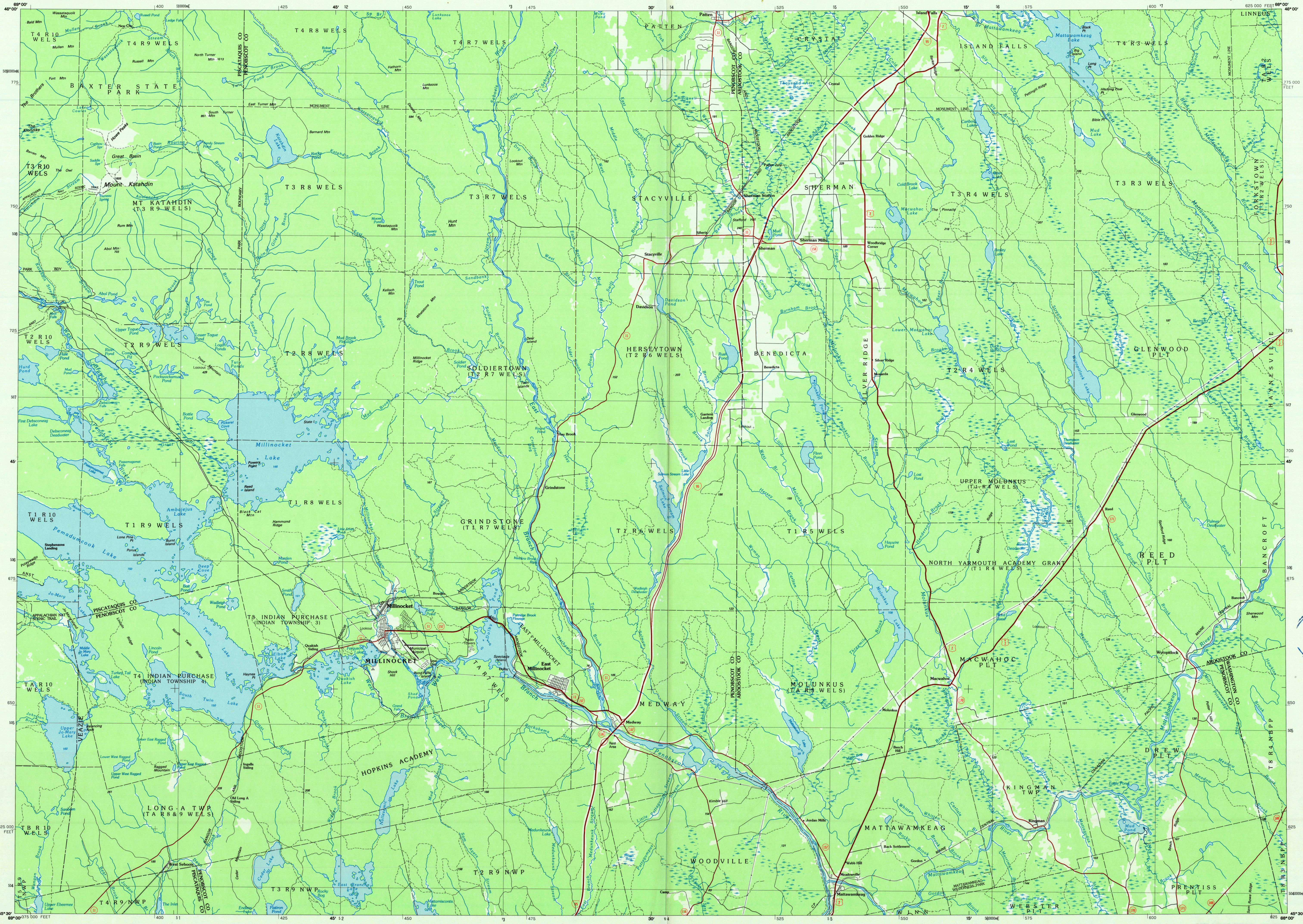


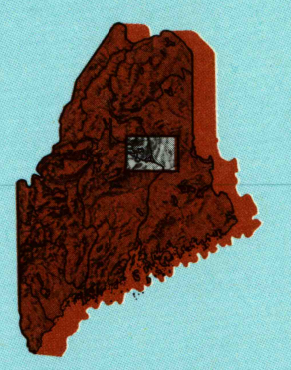
MILLINOCKET, MAINE

30 X 60 MINUTE SERIES (PLANIMETRIC)



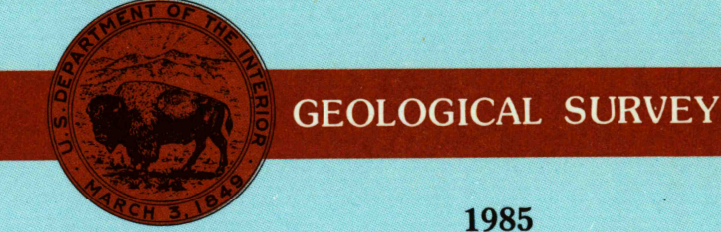
# Millinocket MAINE

1:100 000-scale planimetric map



30 X 60 MINUTE QUADRANGLE SHOWING

- Elevations in meters
- Highways, roads and other manmade structures
- Water features
- Woodland areas
- Geographic names



Produced by the United States Geological Survey  
 Compiled from USGS 1:62 500-scale topographic maps dated 1940-1953. Planimetry revised from aerial photographs taken 1980 and other source data. Revised information not field checked. Map edited 1985.  
 Projection and 10 000-meter grid, zone 19. Universal Transverse Mercator 25 000-foot grid ticks based on Maine coordinate system, east zone 1927 North American Datum.  
 To place on the predicted North American Datum 1983, move the projection lines 1 meter south and 44 meters west.  
 There may be private inholdings within the boundaries of the National or State reservations shown on this map.

NATIONAL GEODETIC VERTICAL DATUM OF 1929  
 ELEVATIONS SHOWN TO THE NEAREST METER

THIS MAP COMPLIES WITH NATIONAL MAP ACCURACY STANDARDS

CONVERSION TABLE		DECLINATION DIAGRAM		ADJOINING MAPS		
Meters	Feet	Diagram showing magnetic declination from true north.		1	2	3
1	3.2808			4	5	6
2	6.5617			7	8	
3	9.8425			1 Chamberlain Lake		
4	13.1234			2 Oakfield		
5	16.4042			3 Healdton		
6	19.6850			4 Moosehead Lake		
7	22.9659			5 Danforth		
8	26.2467			6 Down-Facroft		
9	29.5275			7 Lincoln		
10	32.8084			8 Calais		

To convert meters to feet multiply by 3.2808  
 To convert feet to meters multiply by 0.3048

UTM grid convergence (GN and 1983 magnetic declination (MD) at center of map Diagram is approximate

FOR SALE BY U.S. GEOLOGICAL SURVEY  
 DENVER, COLORADO 80225, OR RESTON, VIRGINIA 22092



### Topographic Map Symbols

- Primary highway, hard surface
- Secondary highway, hard surface
- Light duty road, principal street, hard or improved surface
- Other road or street, trail
- Route marker: interstate, U.S., State
- Railroad: standard gage; narrow gage
- Bridge: overpass; underpass
- Tunnel: road; railroad
- Built up area, locality, elevation
- Airport; landing field; landing strip
- National boundary
- State boundary
- County boundary
- National or State reservation boundary
- Land grant boundary
- U.S. public lands survey: range, township, section
- Range, township, section line: protracted
- Power transmission line; pipeline
- Dam; dam with lock
- Cemetery; building
- Windmill; water well; spring
- Mine shaft; adit or cave; mine, quarry; gravel pit
- Campground; picnic area; U.S. location monument
- Ruins; cliff dwelling
- Structural surface: strip mine, lava, sand
- Contours: index; intermediate; supplementary
- Bathymetric contours: index; intermediate
- Stream, lake: perennial; intermittent
- Rapids, large and small; falls, large and small
- Area to be submerged; marsh, swamp
- Land subject to controlled inundation; woodland
- Sand; mangrove
- Dredged; vineyard

A pamphlet describing topographic maps is available on request