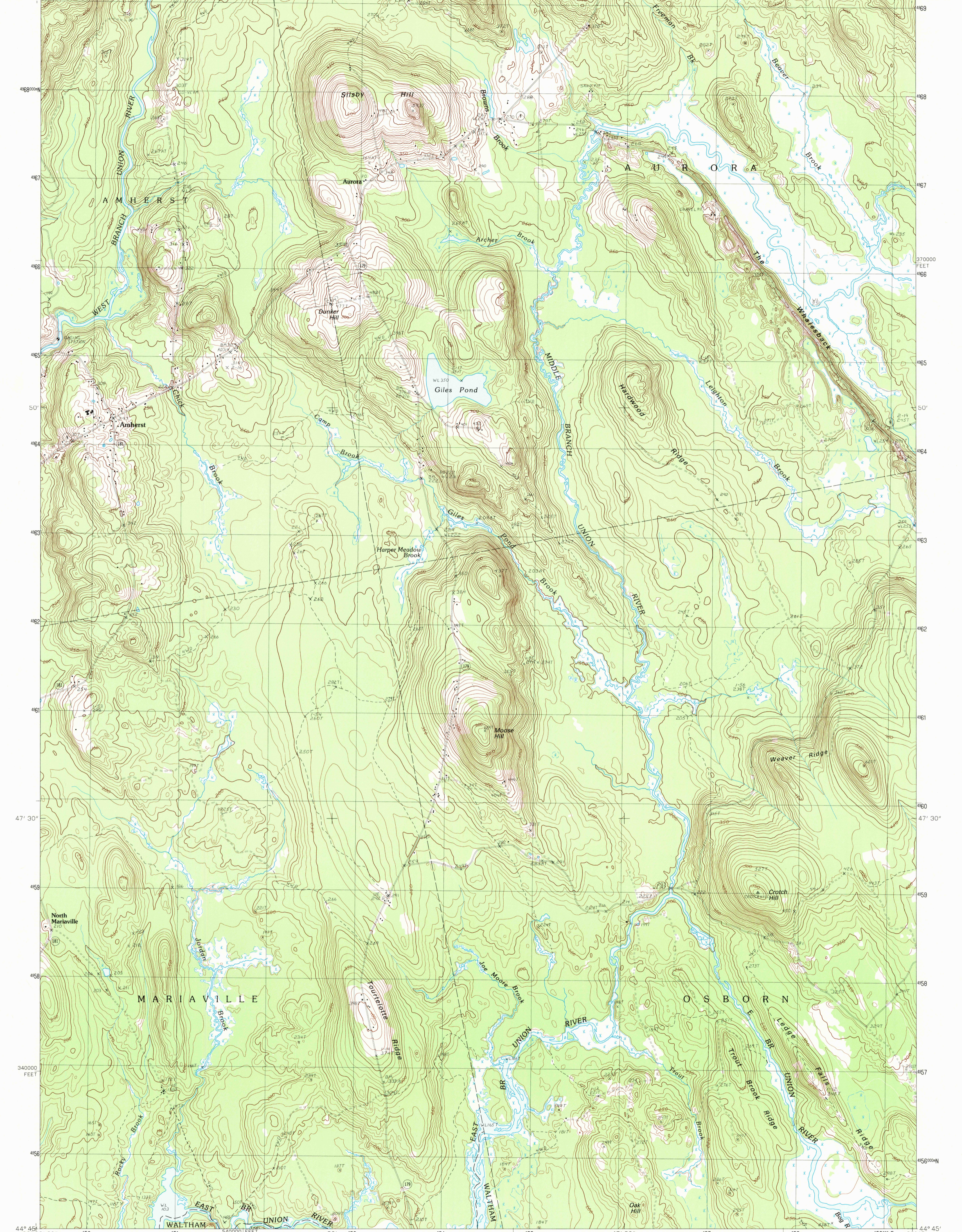
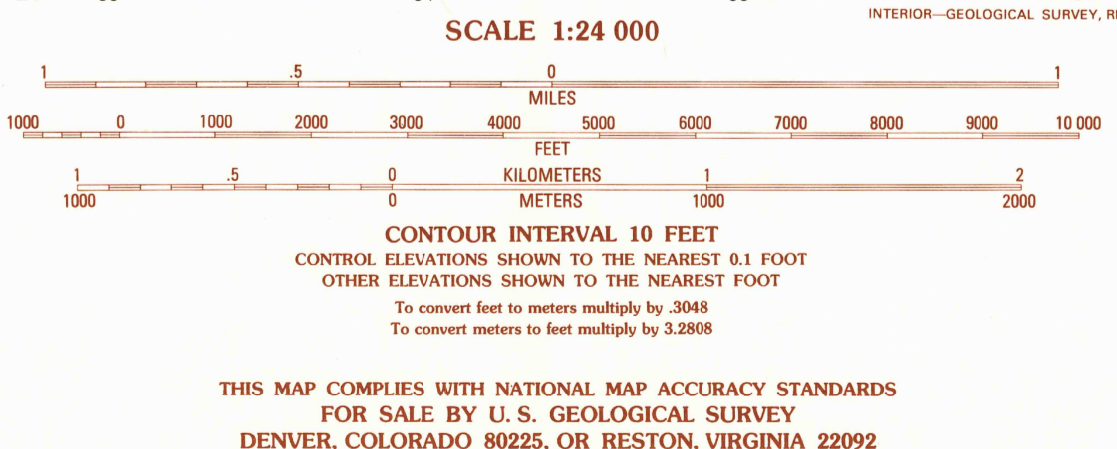


68° 22' 30" 150 000 E 51 52 20' 53 54 55 17' 30" 57 58 000 FEET 59 68° 15' 44° 52' 30"

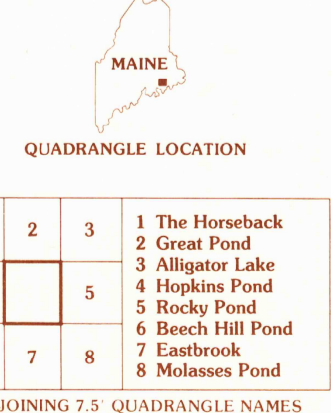


PRODUCED BY THE UNITED STATES GEOLOGICAL SURVEY CONTROL BY USGS AND NOS/NOAA COMPILED FROM AERIAL PHOTOGRAPHS TAKEN 1981 FIELD CHECKED 1982 MAP EDITED 1988 PRODUCTION 1988 PROJECTION TRANSVERSE MERCATOR GRID: 1000-METER UNIVERSAL TRANSVERSE MERCATOR ZONE 19 10,000-FOOT STATE GRID TICKS MAINE, EAST ZONE UTM GRID DECLINATION 0°29' EAST 1988 MAGNETIC NORTH DECLINATION 1990 WEST VERTICAL DATUM NATIONAL GEODETIC VERTICAL DATUM OF 1929 HORIZONTAL DATUM 1927 NORTH AMERICAN DATUM To place on the predicted North American Datum of 1983, move the projection lines as shown by dashed corner ticks (1 meter south and 46 meters west). There may be private inholdings within the boundaries of any Federal and State reservations shown on this map. No distinction made between houses, barns, and other buildings

PROVISIONAL MAP
Produced from original manuscript drawings. Information shown as of date of photography.



THIS MAP COMPLIES WITH NATIONAL MAP ACCURACY STANDARDS FOR SALE BY U.S. GEOLOGICAL SURVEY DENVER, COLORADO 80225, OR RESTON, VIRGINIA 22092



ROAD LEGEND

Improved Road
Unimproved Road
Trail

○ Interstate Route ○ U.S. Route ○ State Route

1	2	3	1 The Horseback
			2 Great Pond
			3 Alligator Lake
4		5	4 Hopkins Pond
			5 Rocky Pond
			6 Beech Hill Pond
6	7	8	7 Eastbrook
			8 Malasses Pond

ADJOINING 7.5 QUADRANGLE NAMES

AMHERST, MAINE
PROVISIONAL EDITION 1988
44068-G3-TF-024