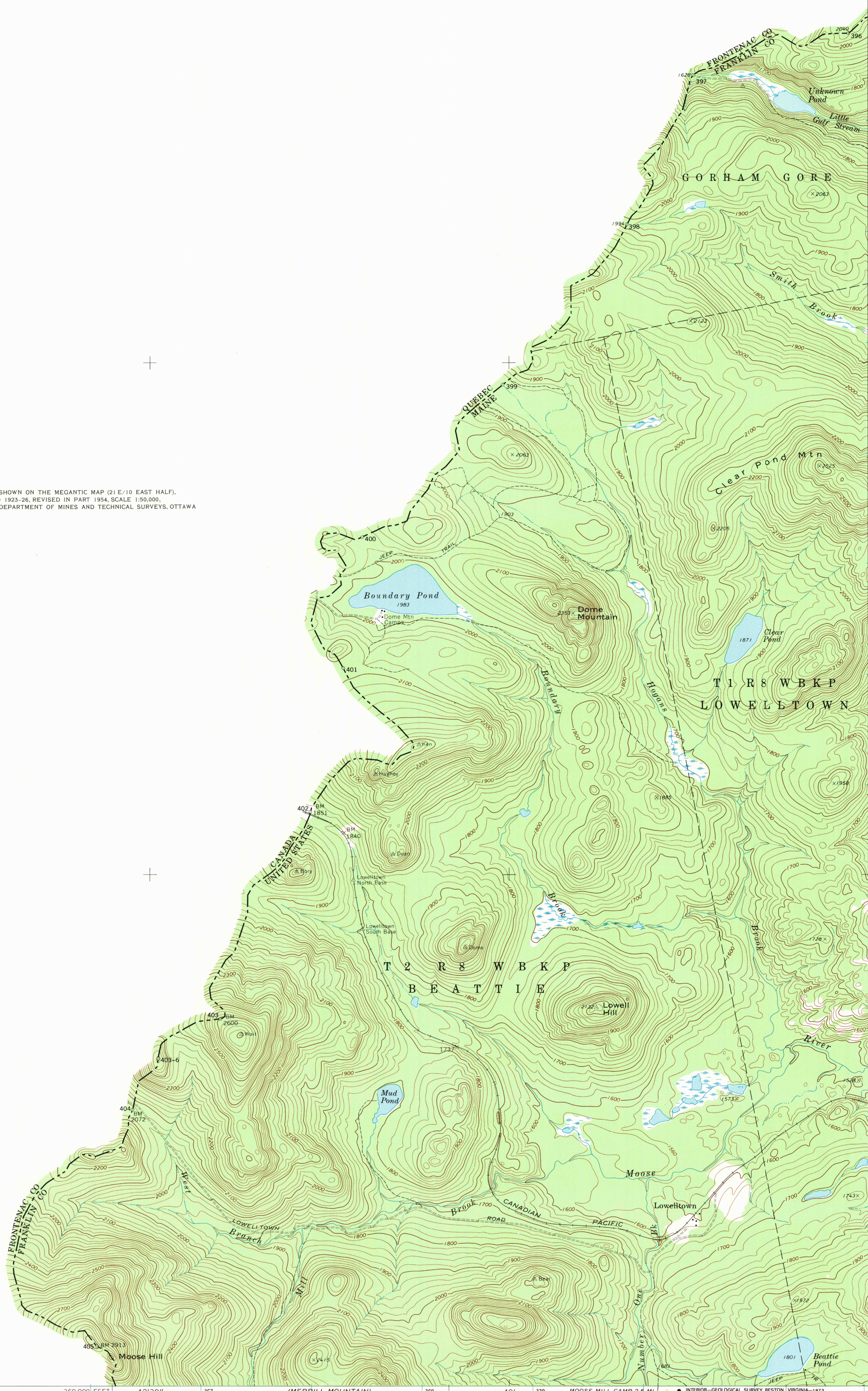


70° 45' 164 165 166 167 168 169 170 40' 171 172 380 000 FEET 70° 37' 30" 45° 37' 30"

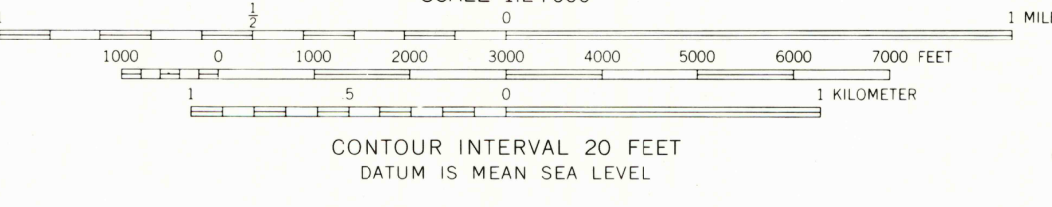
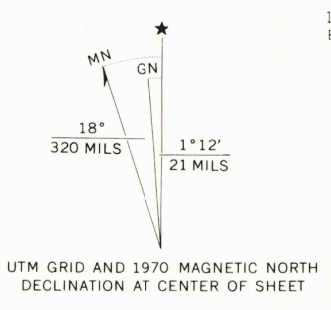
5053000 N
5052
5051
5050
35'
5049
5048
5047
5046
5045
32' 30"
5044
5043
980 000
5042
5041
5040
45° 30'

5053
5052
1 010 000
5050
5049
5048
5047
5046
5045
5044
5043
5042
5041
5040
45° 37' 30" 45° 37' 30"

THIS AREA IS SHOWN ON THE MEGANTIC MAP (21 E/10 EAST HALF),
SURVEYED 1923-26, REVISED IN PART 1954, SCALE 1:50,000,
PUBLISHED BY THE DEPARTMENT OF MINES AND TECHNICAL SURVEYS, OTTAWA



Mapped, edited, and published by the Geological Survey
Control by USGS, USC&GS, and International Boundary Commission
Topography by photogrammetric methods from aerial
photographs taken 1966. Field checked 1970
Polyconic projection. 1927 North American datum
10,000-foot grid based on Maine coordinate system, west zone
1000-meter Universal Transverse Mercator grid ticks,
zone 19, shown in blue



ROAD CLASSIFICATION
Unimproved road, fair or dry
weather
Trails

BOUNDARY POND, MAINE
SW/4 SKINNER 15' QUADRANGLE
N4530—W7037.5/7.5
1970
AMS 6875 II SW—SERIES V811

THIS MAP COMPLIES WITH NATIONAL MAP ACCURACY STANDARDS
FOR SALE BY U. S. GEOLOGICAL SURVEY
DENVER, COLORADO 80225, OR RESTON, VIRGINIA 22092
A FOLDER DESCRIBING TOPOGRAPHIC MAPS AND SYMBOLS IS AVAILABLE ON REQUEST

ARNOLD POND 1:62,500
6875 IV

MOOSE MOUNTAIN
6875 IVE